



Discover the Art of Display...

Project Name: \_\_\_\_\_  
Item #: \_\_\_\_\_ Quantity: \_\_\_\_\_



Diamond Pro 2 joined with Diamond 2 Gelato. Optional HPL white finish front and sides

# DIAMOND PRO 1-2-3

## Neutral Showcase

**DIAMOND PRO 1 NEUTRAL:** DIAMOND PRO 1 N1150, DIAMOND PRO 1 N1650, DIAMOND PRO 1 N2150

**DIAMOND PRO 2 NEUTRAL:** DIAMOND PRO 2 N1150, DIAMOND PRO 2 N1650, DIAMOND PRO 2 N2150

**DIAMOND PRO 3 NEUTRAL:** DIAMOND PRO 3 N1150, DIAMOND PRO 3 N1650, DIAMOND PRO 3 N2150



Visit our website for more finishing options and RAL colors  
[www.oscartek.com](http://www.oscartek.com)

### STANDARD FEATURES

- Available in 3 heights: 47”H, 53”H, and 59”H
- Chrome finishing
- Diffused LED lighting 3000°K
- Front glass with safety tilt down opening system
- Pyrolytic anti-fog front and side glass
- Cases ship standard unfinished front and stainless steel skin sides

### OPTIONS

- Work top (brushed s/s, corian, granite)
- Stainless steel step shelf
- Epoxy RAL color interior and exterior over stainless steel
- RAL color/custom plastic wood laminate exterior front and sides
- Unfinished panels to accept millwork by others
- Casters

\*Oscartek reserves the right to change, modify, discontinue, or change any features, sizes, or capacity on any model without prior notice.

OSCARTEK®  
512 South Airport Blvd., South San Francisco, CA 94080  
Tel: 650.342.2400 | Fax: 650.342.7400  
[www.oscartek.com](http://www.oscartek.com)



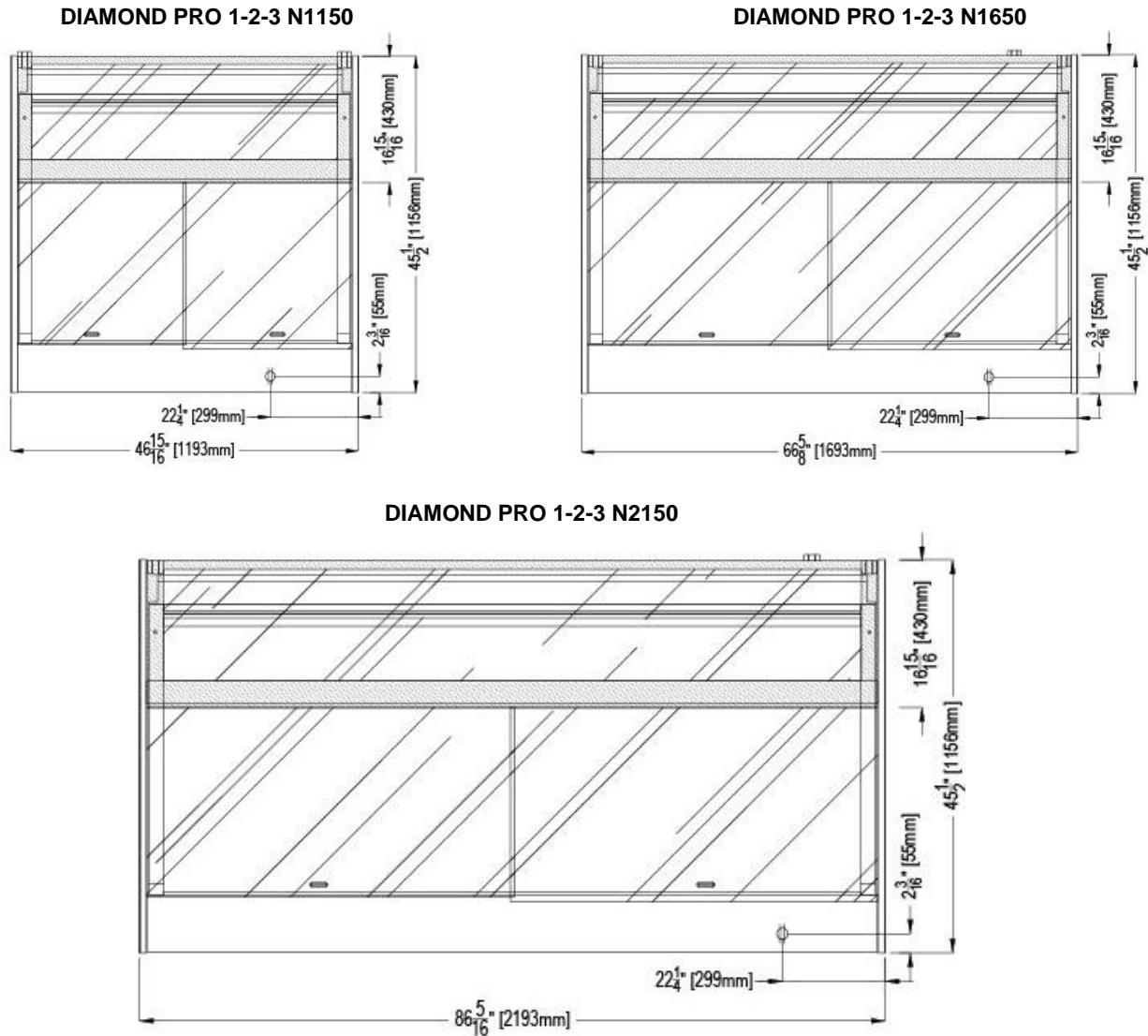
## DIAMOND PRO 1-2-3 NEUTRAL

DIAMOND PRO 1 NEUTRAL: DIAMOND PRO 1 N1150, DIAMOND PRO 1 N1650, DIAMOND PRO 1 N2150

DIAMOND PRO 2 NEUTRAL: DIAMOND PRO 2 N1150, DIAMOND PRO 2 N1650, DIAMOND PRO 2 N2150

DIAMOND PRO 3 NEUTRAL: DIAMOND PRO 3 N1150, DIAMOND PRO 3 N1650, DIAMOND PRO 3 N2150

### STANDARD: DIAMOND PRO 1-2-3 NEUTRAL PLAN VIEWS



#### ELECTRICAL LEGEND



POWER

\*Oscartek reserves the right to change, modify, discontinue, or change any features, sizes, or capacity on any model without prior notice.

## DIAMOND PRO 1-2-3 NEUTRAL

DIAMOND PRO 1 NEUTRAL: DIAMOND PRO 1 N1150, DIAMOND PRO 1 N1650, DIAMOND PRO 1 N2150

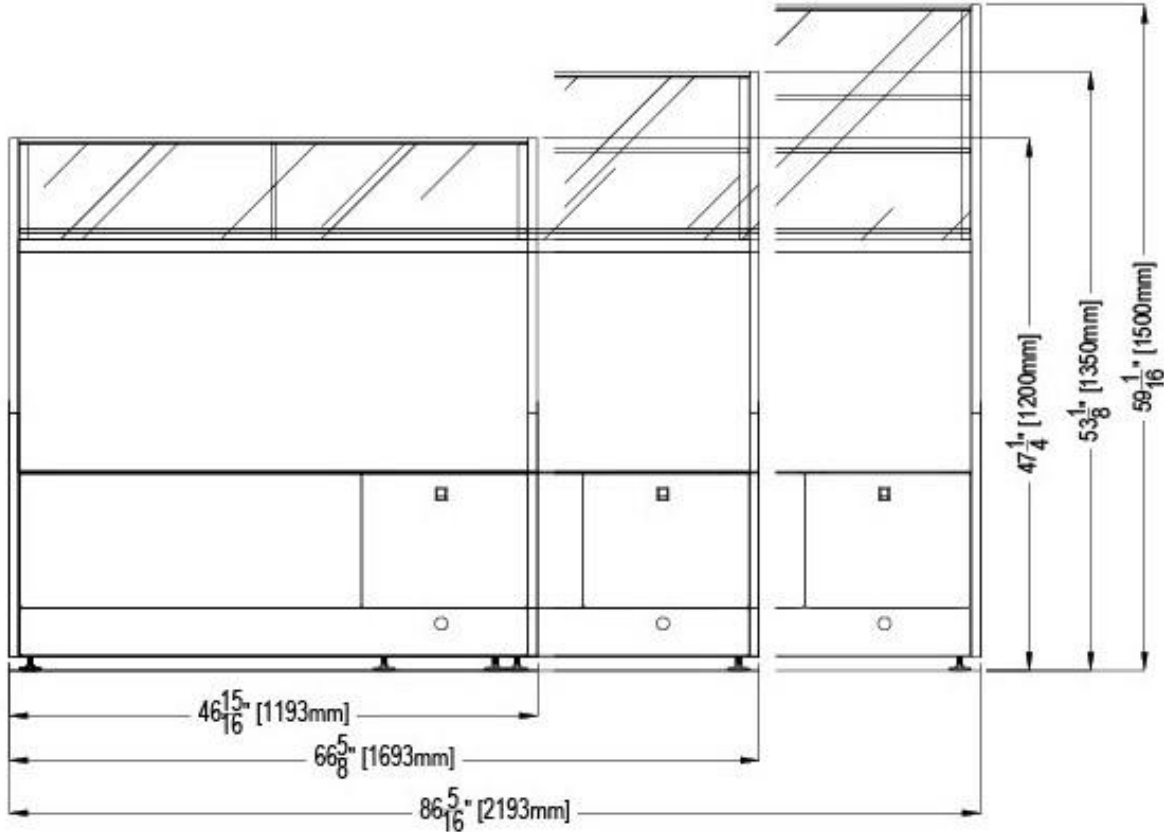
DIAMOND PRO 2 NEUTRAL: DIAMOND PRO 2 N1150, DIAMOND PRO 2 N1650, DIAMOND PRO 2 N2150

DIAMOND PRO 3 NEUTRAL: DIAMOND PRO 3 N1150, DIAMOND PRO 3 N1650, DIAMOND PRO 3 N2150

### STANDARD: DIAMOND PRO 1-2-3 NEUTRAL

#### REAR ELEVATIONS (OPERATOR SIDE)

DIAMOND PRO 1-2-3 NEUTRAL N1150, N1650, N2150



\*Oscartek reserves the right to change, modify, discontinue, or change any features, sizes, or capacity on any model without prior notice.

## DIAMOND PRO 1-2-3 NEUTRAL

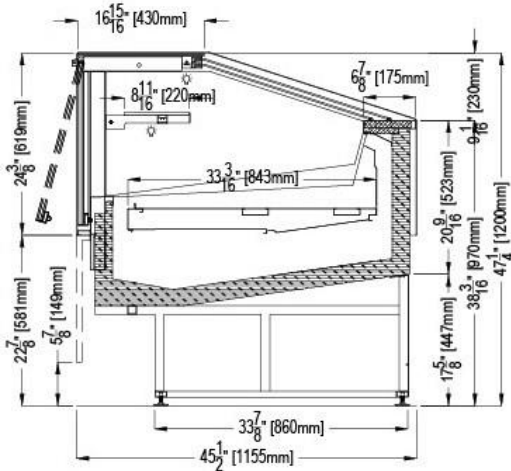
DIAMOND PRO 1 NEUTRAL: DIAMOND PRO 1 N1150, DIAMOND PRO 1 N1650, DIAMOND PRO 1 N2150

DIAMOND PRO 2 NEUTRAL: DIAMOND PRO 2 N1150, DIAMOND PRO 2 N1650, DIAMOND PRO 2 N2150

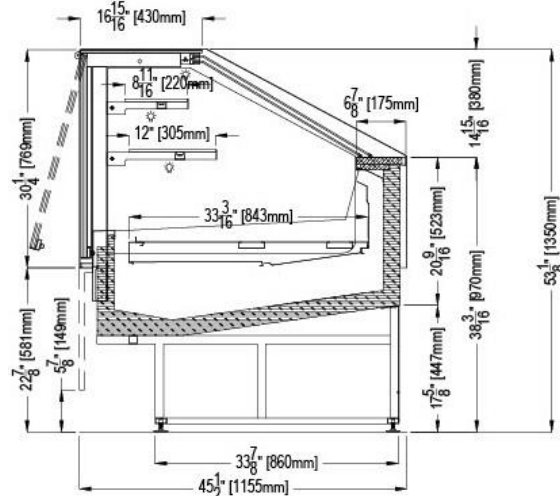
DIAMOND PRO 3 NEUTRAL: DIAMOND PRO 3 N1150, DIAMOND PRO 3 N1650, DIAMOND PRO 3 N2150

### STANDARD: DIAMOND PRO 1-2-3 NEUTRAL SECTION VIEWS

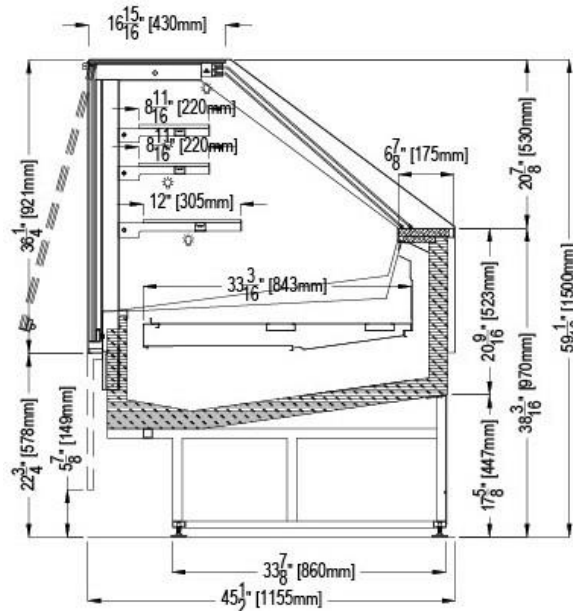
DIAMOND PRO 1 – 47 1/4”H



DIAMOND PRO 2 – 53 1/8”H



DIAMOND PRO 3 – 59 1/16”H



\*Oscartek reserves the right to change, modify, discontinue, or change any features, sizes, or capacity on any model without prior notice.



Project Name: \_\_\_\_\_  
 Item #: \_\_\_\_\_ Quantity: \_\_\_\_\_

## DIAMOND PRO 1-2-3 NEUTRAL

**DIAMOND PRO 1 NEUTRAL:** DIAMOND PRO 1 N1150, DIAMOND PRO 1 N1650, DIAMOND PRO 1 N2150

**DIAMOND PRO 2 NEUTRAL:** DIAMOND PRO 2 N1150, DIAMOND PRO 2 N1650, DIAMOND PRO 2 N2150

**DIAMOND PRO 3 NEUTRAL:** DIAMOND PRO 3 N1150, DIAMOND PRO 3 N1650, DIAMOND PRO 3 N2150

DIAMOND PRO 1 NEUTRAL				
TECHNICAL FEATURES		MODELS		
		DIAMOND PRO 1 N1150	DIAMOND PRO 1 N1650	DIAMOND PRO 1 N2150
External Dimensions (L-D-H) Inches-MM	Inches MM	* 46 15/16" - 45 1/2" - 47 1/4" *1193 - 1155 - 1200	* 66 5/8" - 45 1/2" - 47 1/4" *1693 - 1155 - 1200	* 86 5/16" - 45 1/2" - 47 1/4" *2193 - 1155 - 1200
Crated Dimensions (L-D-H) Inches-MM	Inches MM	54" - 52" - 53" 1372 - 1320 - 1346	74" - 52" - 53" 1880 - 1320 - 1346	93" - 52" - 53" 2362 - 1320 - 1346
Operating Temperature	°F	Ambient	Ambient	Ambient
Power Supply	(V/Ph/Hz)	120/1/60	120/1/60	120/1/60
Power Consumption	(W/A)	50/0,5	100/1,0	150/1,5
Net Weights	Lb	440	640	720
Crated Weights	Lb	530	740	830

\* DIMENSIONS ARE WITH STANDARD POLISHED S/S SKIN SIDES

DIAMOND PRO 2 NEUTRAL				
TECHNICAL FEATURES		MODELS		
		DIAMOND PRO 2 N1150	DIAMOND PRO 2 N1650	DIAMOND PRO 2 N2150
External Dimensions (L-D-H) Inches-MM	Inches MM	* 46 15/16" - 45 1/2" - 53 1/8" *1193 - 1155 - 1350	* 66 5/8" - 45 1/2" - 53 1/8" *1693 - 1155 - 1350	* 86 5/16" - 45 1/2" - 53 1/8" *2193 - 1155 - 1350
Crated Dimensions (L-D-H) Inches-MM	Inches MM	54" - 52" - 61" 1372 - 1320 - 1549	74" - 52" - 61" 1880 - 1320 - 1549	93" - 52" - 61" 2362 - 1320 - 1549
Operating Temperature	°F	Ambient	Ambient	Ambient
Power Supply	(V/Ph/Hz)	120/1/60	120/1/60	120/1/60
Power Consumption	(W/A)	70/0,7	150/1,5	200/2,0
Net Weights	Lb	450	650	730
Crated Weights	Lb	540	750	840

\* DIMENSIONS ARE WITH STANDARD POLISHED S/S SKIN SIDES

DIAMOND PRO 3 NEUTRAL				
TECHNICAL FEATURES		MODELS		
		DIAMOND PRO 3 N1150	DIAMOND PRO 3 N1650	DIAMOND PRO 3 N2150
External Dimensions (L-D-H) Inches-MM	Inches MM	* 46 15/16" - 45 1/2" - 59 1/16" *1193 - 1155 - 1500	* 66 5/8" - 45 1/2" - 59 1/16" *1693 - 1155 - 1500	* 86 5/16" - 45 1/2" - 59 1/16" *2193 - 1155 - 1500
Crated Dimensions (L-D-H) Inches-MM	Inches MM	54" - 52" - 67" 1372 - 1320 - 1701	74" - 52" - 67" 1880 - 1320 - 1701	93" - 52" - 67" 2362 - 1320 - 1701
Operating Temperature	°F	Ambient	Ambient	Ambient
Power Supply	(V/Ph/Hz)	120/1/60	120/1/60	120/1/60
Power Consumption	(W/A)	100/1,0	200/2,0	250/2,5
Net Weights	Lb	460	660	740
Crated Weights	Lb	550	760	850

\* DIMENSIONS ARE WITH STANDARD POLISHED S/S SKIN SIDES

\*Oscartek reserves the right to change, modify, discontinue, or change any features, sizes, or capacity on any model without prior notice.

OSCARTEK®  
 512 South Airport Blvd., South San Francisco, CA 94080  
 Tel: 650.342.2400 | Fax: 650.342.7400  
 www.oscartek.com

