

# ROSA COMBI

## NEUTRAL TOP & REFRIGERATED BOTTOM SHOWCASE

### STANDARD FEATURES

- Neutral top and refrigerated bottom
- Extra clear glass: front, top, and sides glasses
- All tempered glass
- Glass shelf
- Diffused LED lighting 3000°K
- Sliding acrylic back doors
- High polished stainless steel interior
- Stainless steel lower interior foam tub
- Galvanized chassis structure
- Cases ship standard unfinished front and stainless steel skin sides

### OPTIONS

- Lift up top glass
- Work top perimeter (brushed s/s, corian, black HPL, granite)
- Remote condensing unit
- RAL color finish/wood laminate front and side panels
- Epoxy RAL color interior over stainless steel
- Unfinished panels to accept custom millwork by others
- Heated pan for evaporator
- Casters



Photo shown with optional stainless steel front and optional stone top. Standard cases are unfinished front with stainless steel skin sides and brushed s/s top.



Visit our website for more finishing options and RAL colors  
[www.oscartek.com](http://www.oscartek.com)

ROSA COMBI - NEUTRAL TOP & REFRIGERATED BOTTOM				
TECHNICAL FEATURES		MODELS		
		COMBI 1000NT (MUROH34SL39C)	COMBI 1250NT (MUROH34SL49C)	COMBI 1500NT (MUROH34SL59C)
External Dimensions (L-D-H)	Inches	*39 1/2" - 38 15/16" - 48"	*49 5/16" - 38 15/16" - 48"	*59 3/16" - 38 15/16" - 48"
	Inches-MM	*1003 - 989 - 1219	*1253 - 989 - 1219	*1503 - 989 - 1219
Crated Dimensions (L-D-H)	Inches	46" - 45" - 55"	56" - 45" - 55"	66" - 45" - 55"
	Inches-MM	1168 - 1143 - 1397	1422 - 1143 - 1397	1676 - 1143 - 1397
Refrigeration	Type	Fan Ventilated	Fan Ventilated	Fan Ventilated
Refrigeration Display Area	Type	Bottom Display	Bottom Display	Bottom Display
Operating Temperature	°F	39°F	39°F	39°F
Compressor	Nr./Type	1 / Hermetic	1 / Hermetic	1 / Hermetic
BTU'S @ +14°F Evap Temperature	BTU'S	4000	4500	5100
Electric Supply	(V/Ph/Hz)	208-220/1/60	208-220/1/60	208-220/1/60
Power Consumption	(W/A)	1350/6.8	1550/7.5	1750/8.8
Defrost	Mode/Type	Electric	Electric	Electric
Climatic Class	°F/H.R.	75°F-55%RH	75°F-55%RH	75°F-55%RH
Refrigerant Gas	Type	R404A / R452A	R404A / R452A	R404A / R452A
Pipe Size (Inches)	Suction, Liquid	5/8" Suction, 5/16" Liquid	5/8" Suction, 5/16" Liquid	5/8" Suction, 5/16" Liquid
Net Weights	Kg/Lb	350	395	440
Crated Weights	Kg/Lb	400	445	490

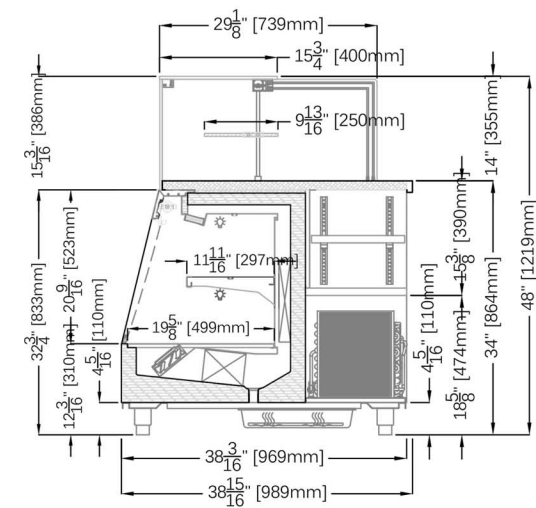
\*DIMENSIONS ARE WITH POLISHED S/S SKIN SIDES

\*Factory in its effort to upgrade and improve our products, has the right to change, modify, discontinue or change any feature, size or capacity on any model without prior notice.

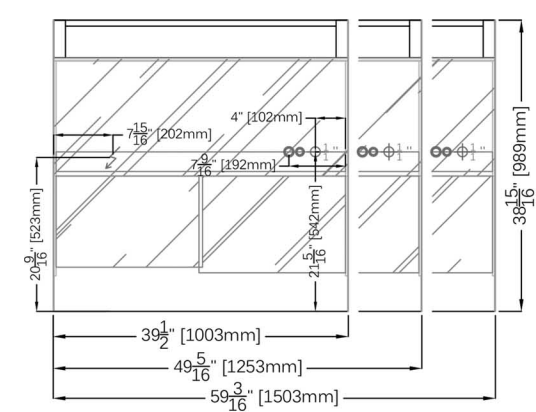
# ROSA COMBI

## NEUTRAL TOP & REFRIGERATED BOTTOM SHOWCASE

SECTION VIEW: COMBI 1000NT, 1250NT, 1500NT

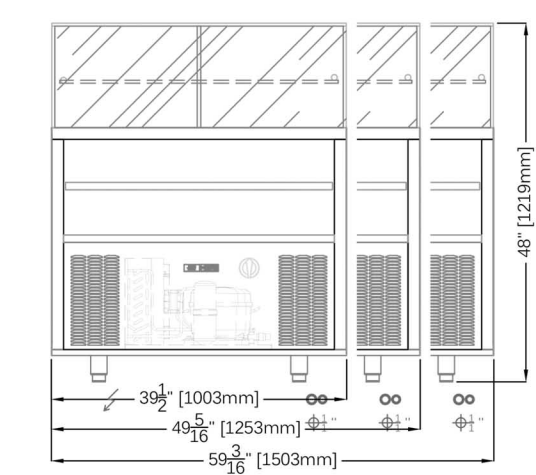


PLAN VIEWS: COMBI 1000NT, 1250NT, 1500NT



ELECTRICAL LEGEND	
	REFRIGERATED LINES
	DRAIN
	POWER

REAR ELEVATIONS (OPERATOR SIDE): COMBI 1000NT, 1250NT, 1500NT



\*Factory in its effort to upgrade and improve our products, has the right to change, modify, discontinue or change any feature, size or capacity on any model without prior notice.



512 South Airport Blvd., South San Francisco, CA 94080  
Tel: 855.885.2400 | 650.342.2400 | Fax: 650.342.7400  
sales@oscartek.com | www.oscartek.com

