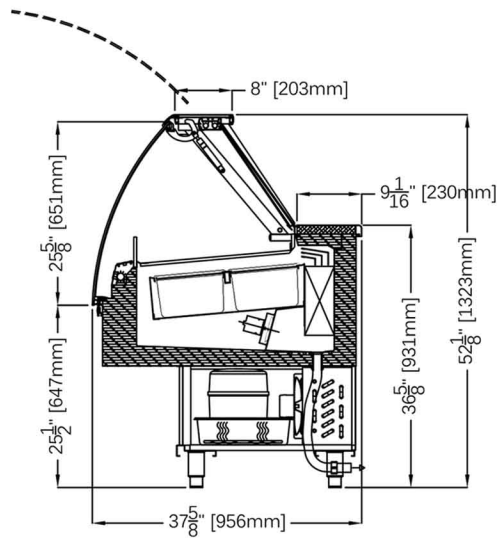


# CLASSIC

# Gelato Showcase



## STANDARD FEATURES

- Stainless steel insulated body with tubular painted galvanized chassis
- Silver trim finish
- Dixell digital controller
- Air cooled condensing unit
- Temperature front and side glass single pane with anti-fog serigraph
- Lift up hydraulic front glass
- LED lighting
- Temperd glass shelves when applicable
- Plexiglass sliding doors
- Stainless steel work bench
- Cases ship standard unfinished front and stainless steel skin sides

## OPTIONS

- Champagne trim finish
- Stainless steel inserts and pans
- Dip well
- Cone holder
- Frozen cake stainless steel trays
- Dual temperature zone
- Marble/granite work counter
- RAL color finish/wood laminate
- Roll down curtain
- Remote/water cooled unit
- Matching front cabinetry counters with top glass
- Casters

CLASSIC GELATO					
TECHNICAL FEATURES		MODELS			
		CLASSIC CG1000	CLASSIC CG1500	CLASSIC CG2000	CLASSIC CG2000DT
External Dimensions (L-D-H)	Inches	39 1/2" - 37 3/4" - 52 1/8"	59 1/8" - 37 3/4" - 52 1/8"	78 3/4" - 37 3/4" - 52 1/8"	78 3/4" - 37 3/4" - 52 1/8"
	Inches-MM	1000 - 956 - 1323	1500 - 956 - 1323	2000 - 956 - 1323	2000 - 956 - 1323
Crated Dimensions (L-D-H)	Inches	44" - 42 1/2" - 57"	65" - 42 1/4" - 57"	84 3/4" - 42 1/4" - 57"	84 3/4" - 42 1/4" - 57"
	Inches-MM	1100 - 1056 - 1447	1600 - 1056 - 1447	2100 - 1056 - 1447	2100 - 1056 - 1447
4 Liter Pan Capacity* 10 1/8" x 6 1/8" x 5 7/8" (258mm x 156mm x 150mm)	Pan Configuration				
5 Liter Pan Capacity* 14 3/16" x 6 1/2" x 4 3/4" (360mm x 165mm x 120mm)	Pan Configuration				
Refrigeration	Type	Fan Ventilated	Fan Ventilated	Fan Ventilated	Fan Ventilated
Operating Temperature	°C / °F	-18°C / -0.4°F	-18°C / -0.4°F	-18°C / -0.4°F	(2) -18°C / -0.4°F
Compressor	Nr./Type	1 / Hermetic	1 / Hermetic	1 / Hermetic	2 / Hermetic
BTU'S @ -25°F Evap Temperature	BTU'S	2450 BTU'S	3580 BTU'S	4550 BTU'S	1984 BTU'S
		400/3/50 (EU)	400/3/50 (EU)	400/3/50 (EU)	400/3/50 (EU)
Electric Supply	(V/Ph/Hz)	208-220/1/60 (USA)	208-220/1/60 (USA)	208-220/1/60 (USA)	208-220/1/60 (USA)
Power Consumption	(W/A)	1950W / 5A	3200W / 5A	3800W / 9A	5000W / 12A
Defrost	Mode/Type	Reverse Cycle	Reverse Cycle	Reverse Cycle	Reverse Cycle
Climatic Class	R.	4/30/86/55%	4/30/86/55%	4/30/86/55%	4/30/86/55%
Refrigerant Gas	Type	R404A	R404A	R404A	R404A
Net Weights	Kg/Lb	190Kgs / 418Lbs	230Kgs / 507Lbs	270Kgs / 595Lbs	300Kgs / 661Lbs
Crated Weights	Kg/Lb	290Kgs / 639Lbs	360Kgs / 793Lbs	425Kgs / 936Lbs	455Kgs / 1003Lbs

\* DIMENSIONS ARE WITHOUT SIDE PANELS \* PANS NOT INCLUDED

\* Manufacturer reserves the right to change specifications without notice. Not responsible for error and omissions.



361-367 Beach Road, Burlingame, CA 94010  
 Tel: 855.885.2400 | 650.342.2400 | Fax: 650.342.7400  
 sales@oscartek.com | www.oscartek.com

