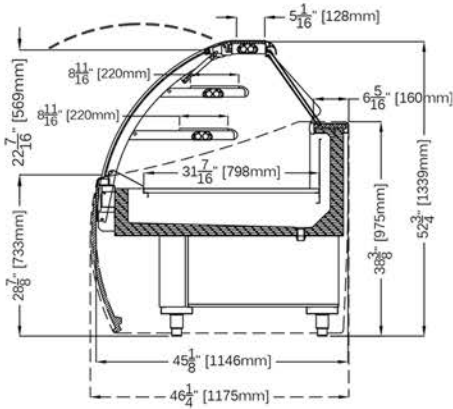
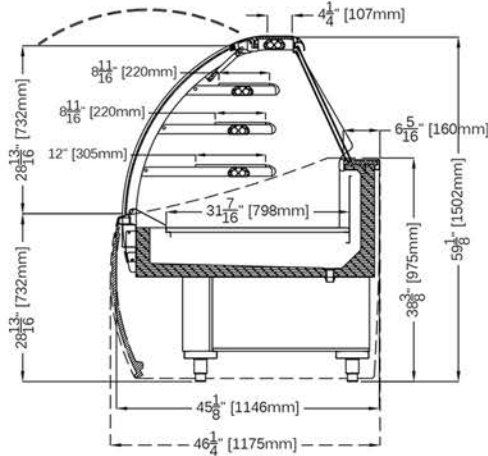


**CORA 2 - 52 3/4" H**



**CORA 3 - 59 1/8" H**



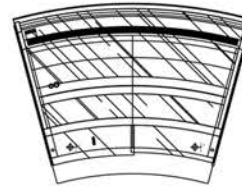
### STANDARD FEATURES

- Dry case
- LED lighting on each shelf
- Cases ship standard unfinished

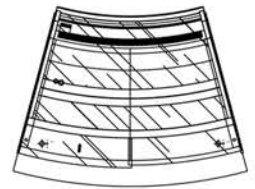
### OPTIONS

- Flat or round front/side panels
- RAL color/laminate front and side panels
- Casters

**30° Open**



**30° Closed**



## CORA NEUTRAL

TECHNICAL FEATURES		MODELS				
		CORA 2 N1110	CORA 2 N1610	CORA 2 N2106	CORA 2 NA30	CORA 2 NC30
External Dimensions (L-D-H)	Inches	43 11/16 - 45 1/8" - 52 3/4"	63 3/8" - 45 1/8" - 52 3/4"	82 15/16" - 45 1/8" - 52 3/4"	63 1/4" - 45 1/8" - 52 3/4"	38 5/8" - 45 1/8" - 52 3/4"
	Inches-MM	1110 - 1146 - 1339	1610 - 1146 - 1339	2106 - 1146 - 1339	1607 - 1146 - 1339	981 - 1146 - 1339
Crated Dimensions (L-D-H)	Inches	50 1/8" - 53 1/8" - 63"	70 7/8" - 53 1/8" - 63"	89 1/2" - 53 1/8" - 63"	70" - 53 1/8" - 63"	45" - 53 1/8" - 63"
	Inches-MM	1273 - 1350 - 1600	1800 - 1350 - 1600	2273 - 1350 - 1600	1778 - 1350 - 1600	1143 - 1350 - 1600
Power Supply	(V)	120V	120V	120V	120V	120V
Amperage	(A)	2A	3A	4A	2A	2A
Operating Temperature	°C / °F	Ambient	Ambient	Ambient	Ambient	Ambient
Net Weights	Kg/Lb	94Kgs / 216Lbs	118Kgs / 271Lbs	130Kgs / 299Lbs	118Kgs / 271Lbs	118Kgs / 271Lbs
Crated Weights	Kg/Lb	110Kgs / 253Lbs	138Kgs / 318Lbs	155Kgs / 356Lbs	138Kgs / 318Lbs	138Kgs / 318Lbs

\* DIMENSIONS ARE WITHOUT SIDE PANELS



361-367 Beach Road, Burlingame, CA 94010  
 Tel: 855.885.2400 | 650.342.2400 | Fax: 650.342.7400  
 sales@oscartek.com | www.oscartek.com

