

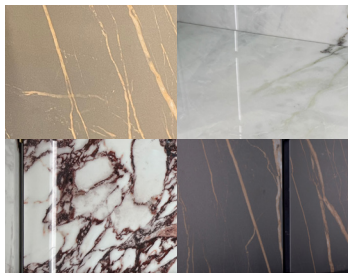


Gala Wine with black HPL exterior

Visit our website for optional RAL colors and Materials finishes.

[RAL Colors Website](#)

[Materials Brochure PDF](#)



Examples of optional 6mm thick stone back panel behind shelf. For full selection see our Materials Brochure.

# GALA WINE

**MODELS:** GALA W700, W1400, W1400-2T, W2100, W2100-2T, W2800

**BACK WINDOW MODELS:** GALA W770BW, W1370BW, W1970BW

**PASS THROUGH MODELS:** GALA W770PT, W1370PT, W1970PT

## STANDARD FEATURES

- Solid Side
- Dual Medium Temperature Version with intermediate double glass divider
- Triple pane glass premium door
- Steel load bearing structure
- 3000°K LED lighting with dimmer switch
- Touch Control
- Ventilated cooling
- interior vertical shelf support in stainless steel
- adjustable feet
- standard steel 304A
- stainless steel interior and exterior
- Stainless steel shelves adjustable in height on racks
- programmed automatic electric defrost
- Approvals: cETLus, ETL sanitation, certified CE
- Remote condensing unit
- Condensate evaporator pan
- **Back Window & Pass Through:** glass shelving glass sides
- **Back Window:** rear glass side
- **Pass Through:** rear glass door

## OPTIONS

- RAL Color Option powder coated door handles exterior and interior over stainless
- Front wood laminate door and handles
- interior shelf trim
- 6mm thick stone back panel behind shelf
- Glass Sides
- Wooden exterior
- top door and interior shelf trim
- Bottom mount condensing unit
- Top mounted condensing unit
- water cooled
- central refrigeration rack
- 60 Hz components UL
- 6mm thick stone back panel behind shelf
- Glass Sides
- Narrow Depth
- front breathing available for 1400L - 2800L models
- **Shelf options:** see section views

\*Oscartek® reserves the right to change, modify, discontinue, or change any features, sizes, or capacity on any model without prior notice.

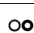
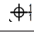
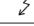
OSCARTEK®  
512 South Airport Blvd., South San Francisco, CA 94080  
Tel: 855.885.2400 | 650.342.2400 | Fax: 650.342.7400  
sales@oscartek.com | www.oscartek.com



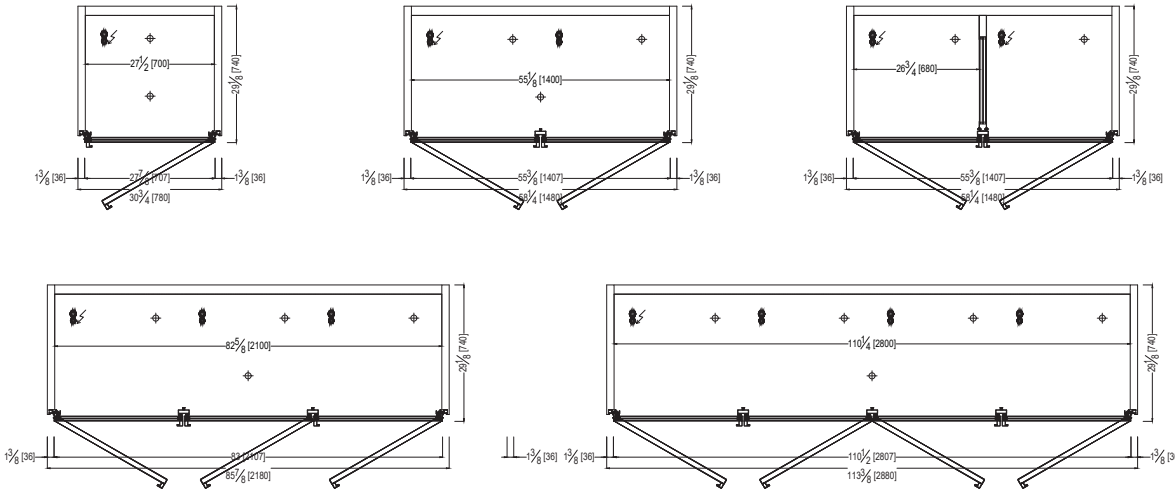
**MODELS:** GALA W700, W1400, W1400-2T, W2100, W2100-2T, W2800

**BACK WINDOW MODELS:** GALA W770BW, W1370BW, W1970BW

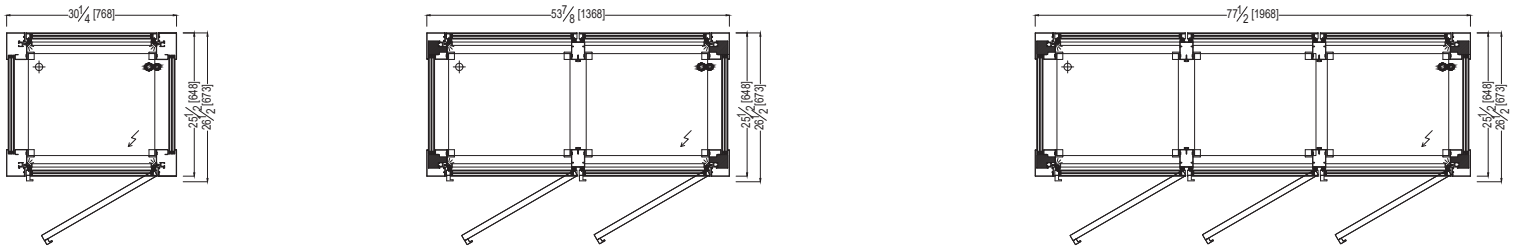
**PASS THROUGH MODELS:** GALA W770PT, W1370PT, W1970PT

ELECTRICAL LEGEND	
	REFRIGERATION LINES
	DRAIN
	POWER

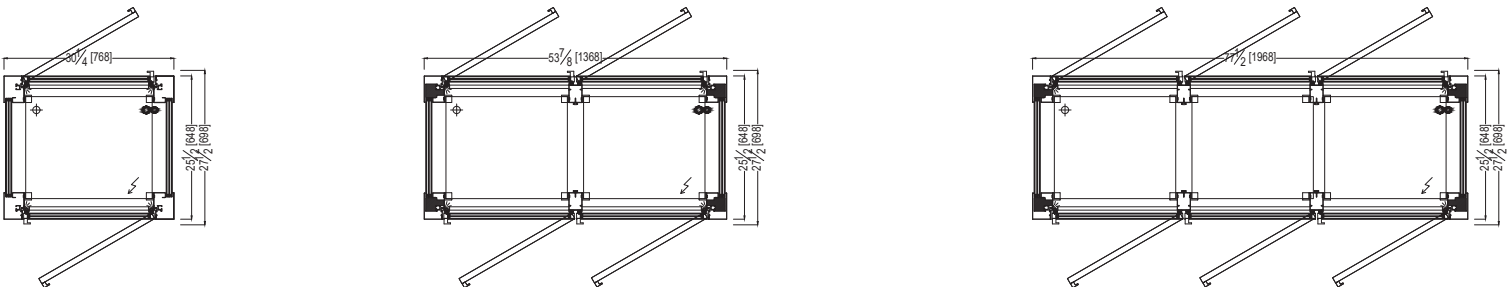
**GALA WINE**  
**PLAN VIEWS**



**GALA WINE - BACK WINDOW**  
**PLAN VIEWS**



**GALA WINE - PASS THROUGH**  
**PLAN VIEWS**



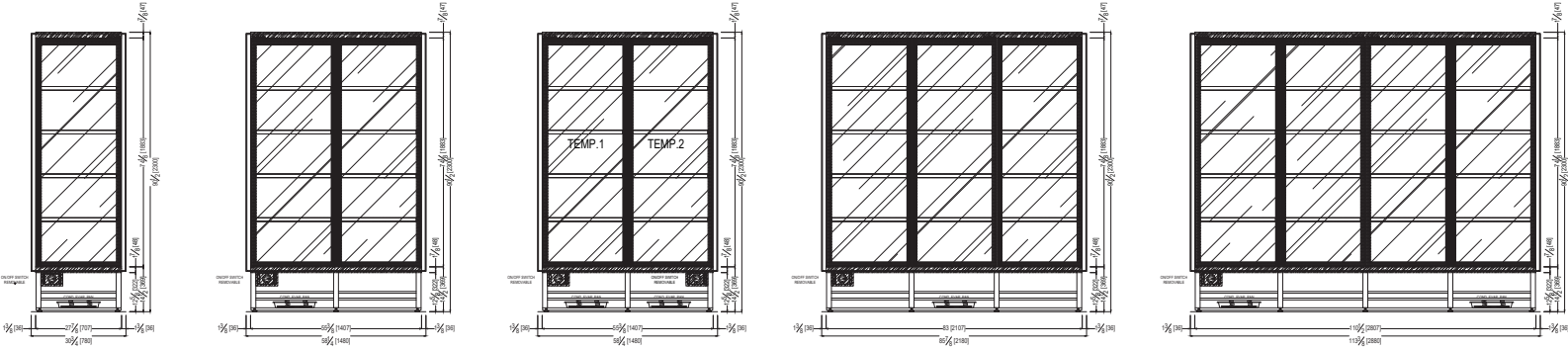
\*Oscartek® reserves the right to change, modify, discontinue, or change any features, sizes, or capacity on any model without prior notice.

**MODELS:** GALA W700, W1400, W1400-2T, W2100, W2100-2T, W2800

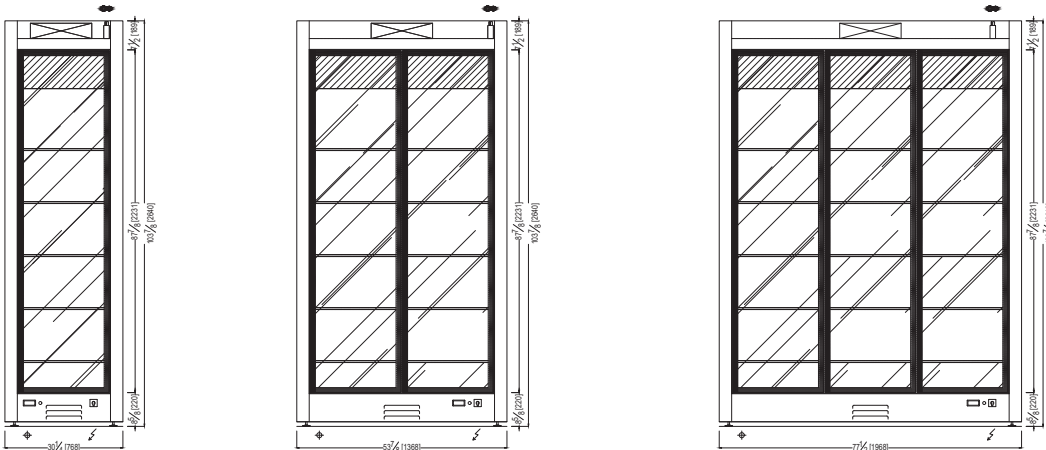
**BACK WINDOW MODELS:** GALA W770BW, W1370BW, W1970BW

**PASS THROUGH MODELS:** GALA W770PT, W1370PT, W1970PT

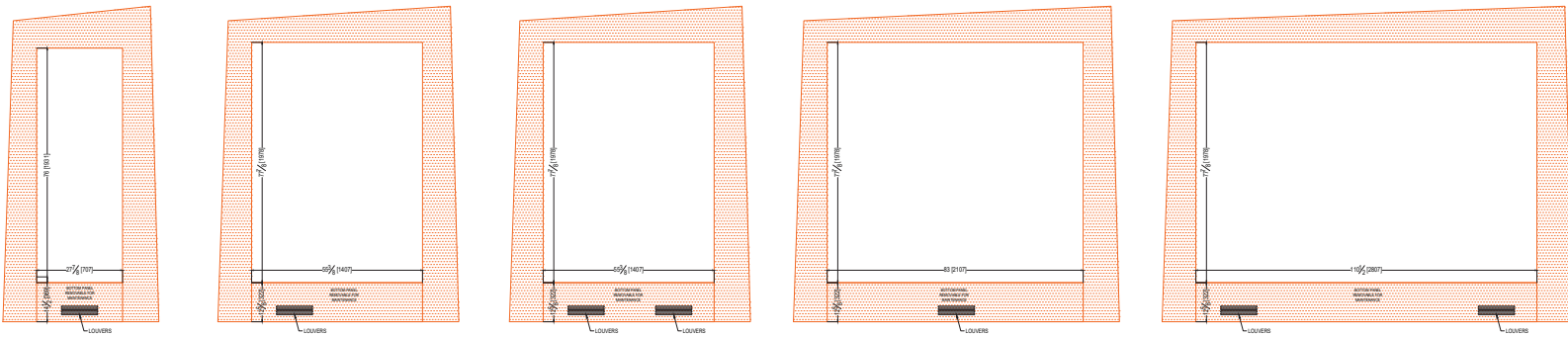
**GALA WINE**  
**FRONT ELEVATIONS**



**GALA WINE- BACK WINDOW & PASS THROUGH**  
**FRONT ELEVATIONS**



**GALA WINE**  
**WALL CUT OUT ELEVATIONS**



\*Oscartek® reserves the right to change, modify, discontinue, or change any features, sizes, or capacity on any model without prior notice.

OSCARTEK®  
512 South Airport Blvd., South San Francisco, CA 94080  
Tel: 855.885.2400 | 650.342.2400 | Fax: 650.342.7400  
sales@oscartek.com | www.oscartek.com



**MODELS:** GALA W700, W1400, W1400-2T, W2100, W2100-2T, W2800

**BACK WINDOW MODELS:** GALA W770BW, W1370BW, W1970BW

**PASS THROUGH MODELS:** GALA W770PT, W1370PT, W1970PT

**GALA WINE - STANDARD DEPTH SECTION VIEWS**

**STANDARD:  
REMOTE**

**STANDARD:  
SELF-CONTAINED  
WITH  
GLASS SIDE**

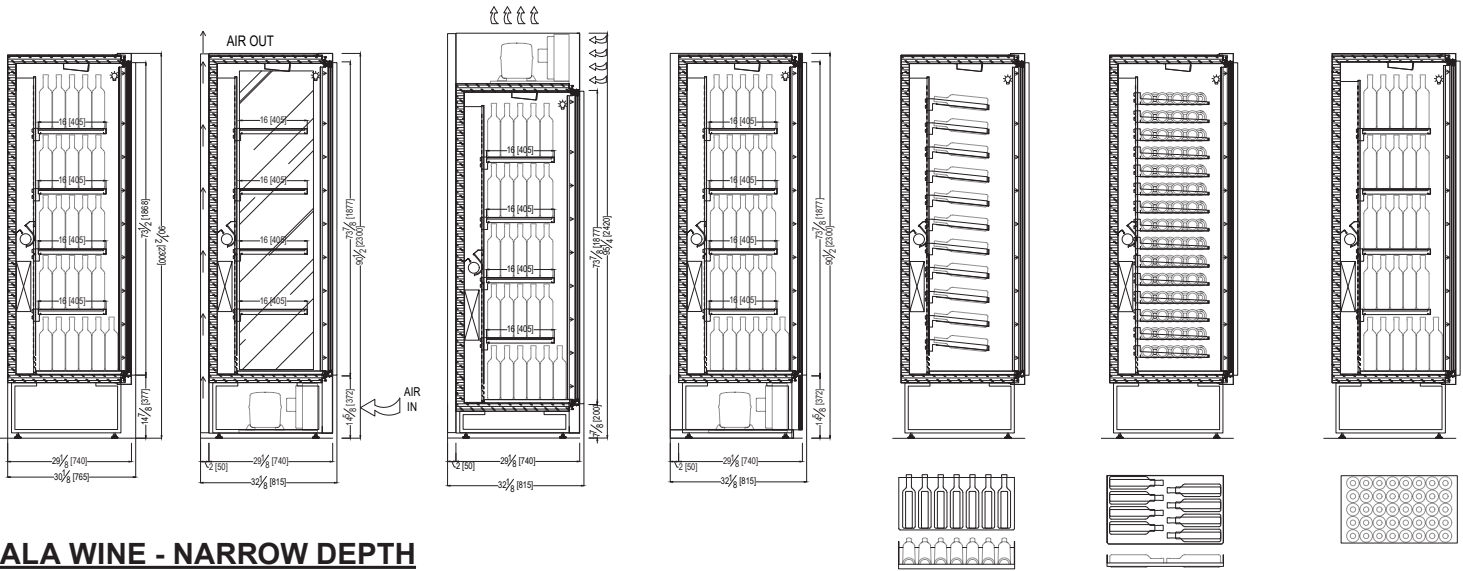
**OPTIONAL:  
TOP MOUNTED  
CONDENSING  
UNIT**

**OPTIONAL:  
WOODEN  
EXTERIOR**

**OPTIONAL:  
SLANTED  
SHELVES**

**OPTIONAL:  
HORIZONTAL  
SHELVES**

**STANDARD:  
VERTICAL  
SHELVES**

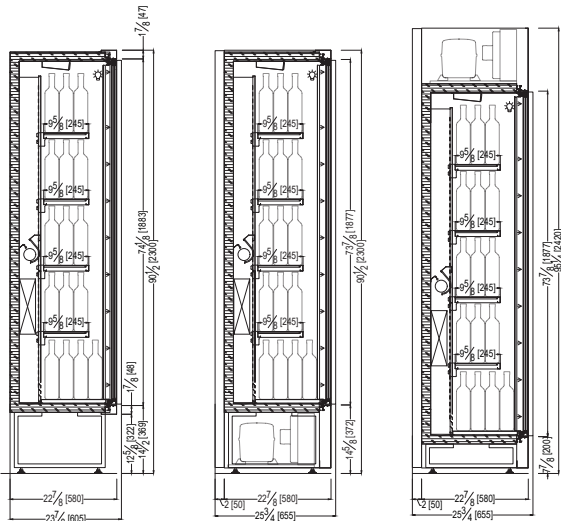


**GALA WINE - NARROW DEPTH SECTION VIEWS**

**STANDARD:  
REMOTE**

**STANDARD:  
SELF-CONTAINED**

**OPTIONAL:  
TOP MOUNTED  
CONDENSING  
UNIT**



\*Oscartek® reserves the right to change, modify, discontinue, or change any features, sizes, or capacity on any model without prior notice.

**MODELS:** GALA W700, W1400, W1400-2T, W2100, W2100-2T, W2800  
**BACK WINDOW MODELS:** GALA W770BW, W1370BW, W1970BW  
**PASS THROUGH MODELS:** GALA W770PT, W1370PT, W1970PT

**GALA WINE BACK WINDOW & PASS THROUGH SECTION VIEWS**

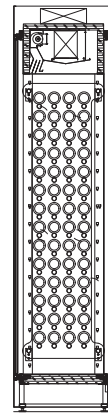
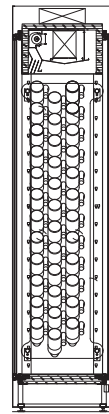
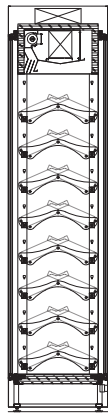
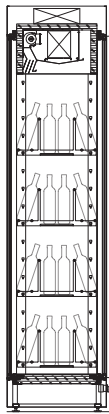
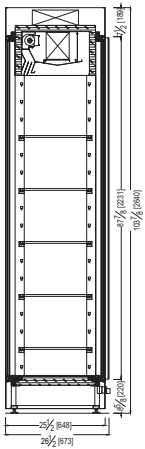
**STANDARD:  
BACK WINDOW  
REMOTE**

**OPTIONAL:  
ROUND TUBULAR  
PYRAMID**

**OPTIONAL:  
ROUND TUBULAR  
RACK**

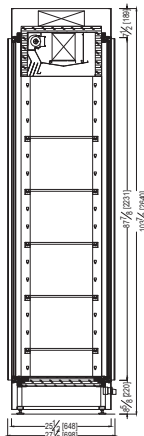
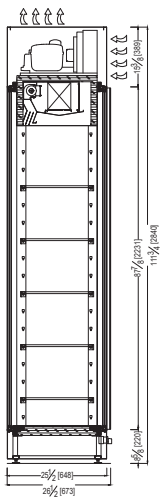
**OPTIONAL:  
SLANTED  
PLEXIGLASS RACK**

**OPTIONAL:  
HORIZONTAL  
PLEXIGLASS RACK**



**OPTIONAL:  
TOP MOUNTED  
CONDENSING UNIT**

**STANDARD:  
PASS THROUGH  
REMOTE**



\*Oscartek® reserves the right to change, modify, discontinue, or change any features, sizes, or capacity on any model without prior notice.

OSCARTEK®  
 512 South Airport Blvd., South San Francisco, CA 94080  
 Tel: 855.885.2400 | 650.342.2400 | Fax: 650.342.7400  
 sales@oscartek.com | www.oscartek.com







Discover the Art of Display...

Project Name: \_\_\_\_\_

Item #: \_\_\_\_\_ Quantity: \_\_\_\_\_

**MODELS: GALA W700, W1400, W1400-2T, W2100, W2100-2T, W2800**

TECHNICAL FEATURES		GALA WINE - REMOTE					
		MODELS					
Model Name (Model ETL Code)		GALA W700 (MUROGALA1P)	GALA W1400 (MUROGALA2P)	GALA W1400-2T (MUROGALA1P) X2	GALA W2100 (MUROGALA3P)	GALA W2100-2T (MUROGALA2P) (MUROGALA1P)	GALA W2800 (MUROGALA4P)
External Dimensions (L-D-H)	Inches	*30 1/4" - 30 1/8" - 90 1/2"	*58 1/4" - 30 1/8" - 90 1/2"	*58 1/4" - 30 1/8" - 90 1/2"	*85 7/8" - 30 1/8" - 90 1/2"	*85 7/8" - 30 1/8" - 90 1/2"	*113 3/8" - 30 1/8" - 90 1/2"
Inches-MM	MM	*780 - 765 - 2300	*1480 - 765 - 2300	*1480 - 765 - 2300	*2180 - 765 - 2300	*2180 - 765 - 2300	*2880 - 765 - 2300
Crated Dimensions (L-D-H)	Inches	38" - 37" - 102"	66" - 37" - 102"	66" - 37" - 102"	93" - 37" - 102"	93" - 37" - 102"	121" - 37" - 102"
Inches-MM	MM	960 - 920 - 2570	1660 - 920 - 2570	1660 - 920 - 2570	2360 - 920 - 2570	2360 - 920 - 2570	3060 - 920 - 2570
Refrigeration	Type	Fan - Ventilated	Fan - Ventilated	Fan - Ventilated	Fan - Ventilated	Fan - Ventilated	Fan - Ventilated
Refrigeration Display Area	Type	Deck	Deck	Deck	Deck	Deck	Deck
Number of Glass Doors	#	1	2	2	3	3	4
Wine Rack Shelves	bottle orientation: #	Vertical: 5 Horizontal: 15 Slanted: 11	Vertical: 10 Horizontal: 30 Slanted: 22	Vertical: (2) 5 Horizontal: (2) 15 Slanted: (2) 11	Vertical: 15 Horizontal: 15 Slanted: 33	Vertical: 10 - 5 Horizontal: 30 - 15 Slanted: 22 - 11	Vertical: 20 Horizontal: 60 Slanted: 44
Bottle Capacity (STD size)	#	Vertical: 208 Horizontal: 120 Slanted: 77	Vertical: 416 Horizontal: 240 Slanted: 154	Vertical: (2) 208 Horizontal: (2) 120 Slanted: (2) 77	Vertical: 624 Horizontal: 360 Slanted: 231	Vertical: 416 - 208 Horizontal: 240 - 120 Slanted: 154 - 77	Vertical: 832 Horizontal: 480 Slanted: 308
Operating Temperature	*F	45°F to 58°F	45°F to 58°F	45°F to 58°F	45°F to 58°F	45°F to 58°F	45°F to 58°F
Condensing Units	#	1	2	2	3	4	5
Compressor	Nr./Type	1 / Hermetic	1 / Hermetic	1 / Hermetic	1 / Hermetic	2 / Hermetic	3 / Hermetic
BTU'S @ +14°F Evap Temperature	BTU/H	2870	5260	(2) 2750	7160	5150	8400
Electric Supply	(V/Ph/Hz)	220/1/60	220/1/60	(2) 220/1/60	220/1/60	(2) 220/1/60	220/1/60
Power Consumption	(W/A)	620/3.5	1200/6.5	(2) 580/3.1	1800/9.6	1150/6.0	2300/12.5
Defrost	Mode/Type	Automatic	Automatic	Automatic	Automatic	Automatic	Automatic
Climatic Class	*F/%RH	75°F-55%RH	75°F-55%RH	75°F-55%RH	75°F-55%RH	75°F-55%RH	75°F-55%RH
Refrigerant Gas	Type	R452a	R452a	R452a	R452a	R452a	R452a
Pipe Size (Suction-Liquid)	(INCHES)	15/32" - 15/64"	35/64" - 5/16"	(2) 15/32" - 15/64"	5/8" - 5/16"	15/32" - 15/64" 35/64" - 5/16"	45/64" - 25/64"
Net Weights	Lb	353	617	705	816	882	970
Crated Weights	Lb	403	677	765	876	942	1030

\*DIMENSIONS WITH POLISHED S/S SIDES

TECHNICAL FEATURES		GALA WINE - SELF CONTAINED					
		MODELS					
Model Name (Model ETL Code)		GALA W700 (MUROGALA1P)	GALA W1400 (MUROGALA2P)	GALA W1400-2T (MUROGALA1P) X2	GALA W2100 (MUROGALA3P)	GALA W2100-2T (MUROGALA2P) (MUROGALA1P)	GALA W2800 (MUROGALA4P)
External Dimensions (L-D-H)	Inches	*30 3/4" - 32 1/8" - 90 1/2"	*58 1/4" - 32 1/8" - 90 1/2"	*58 1/4" - 32 1/8" - 90 1/2"	*85 7/8" - 32 1/8" - 90 1/2"	*85 7/8" - 32 1/8" - 90 1/2"	*113 3/8" - 32 1/8" - 90 1/2"
Inches-MM	MM	*780 - 815 - 2300	*1480 - 815 - 2300	*1480 - 815 - 2300	*2180 - 815 - 2300	*2180 - 815 - 2300	*2880 - 815 - 2300
Crated Dimensions (L-D-H)	Inches	38" - 37" - 102"	66" - 37" - 102"	66" - 37" - 102"	93" - 37" - 102"	93" - 37" - 102"	121" - 37" - 102"
Inches-MM	MM	960 - 920 - 2570	1660 - 920 - 2570	1660 - 920 - 2570	2360 - 920 - 2570	2360 - 920 - 2570	3060 - 920 - 2570
Refrigeration	Type	Fan - Ventilated	Fan - Ventilated	Fan - Ventilated	Fan - Ventilated	Fan - Ventilated	Fan - Ventilated
Refrigeration Display Area	Type	Deck	Deck	Deck	Deck	Deck	Deck
Number of Glass Doors	#	1	2	2	3	3	4
Wine Rack Shelves	bottle orientation: #	Vertical: 5 Horizontal: 15 Slanted: 11	Vertical: 10 Horizontal: 30 Slanted: 22	Vertical: (2) 5 Horizontal: (2) 15 Slanted: (2) 11	Vertical: 15 Horizontal: 15 Slanted: 33	Vertical: 10 - 5 Horizontal: 30 - 15 Slanted: 22 - 11	Vertical: 20 Horizontal: 60 Slanted: 44
Bottle Capacity (STD size)	#	Vertical: 208 Horizontal: 120 Slanted: 77	Vertical: 416 Horizontal: 240 Slanted: 154	Vertical: (2) 208 Horizontal: (2) 120 Slanted: (2) 77	Vertical: 624 Horizontal: 360 Slanted: 231	Vertical: 416 - 208 Horizontal: 240 - 120 Slanted: 154 - 77	Vertical: 832 Horizontal: 480 Slanted: 308
Operating Temperature	*F	45°F to 58°F	45°F to 58°F	45°F to 58°F	45°F to 58°F	45°F to 58°F	45°F to 58°F
Condensing Units	#	1	2	2	3	4	5
Compressor	Nr./Type	1 / Hermetic	1 / Hermetic	1 / Hermetic	1 / Hermetic	2 / Hermetic	3 / Hermetic
BTU'S @ +14°F Evap Temperature	BTU/H	2870	5260	(2) 2750	7160	5150	8400
Electric Supply	(V/Ph/Hz)	220/1/60	220/1/60	(2) 220/1/60	220/1/60	(2) 220/1/60	220/1/60
Power Consumption	(W/A)	620/3.5	1200/6.5	(2) 580/3.1	1800/9.6	1150/6.0	2300/12.5
Defrost	Mode/Type	Automatic	Automatic	Automatic	Automatic	Automatic	Automatic
Climatic Class	*F/%RH	75°F-55%RH	75°F-55%RH	75°F-55%RH	75°F-55%RH	75°F-55%RH	75°F-55%RH
Refrigerant Gas	Type	R290	R290	R290	R290	R290	R290
Pipe Size (Suction-Liquid)	(INCHES)	15/32" - 15/64"	35/64" - 5/16"	(2) 15/32" - 15/64"	5/8" - 5/16"	15/32" - 15/64" 35/64" - 5/16"	45/64" - 25/64"
Net Weights	Lb	353	617	705	816	882	970
Crated Weights	Lb	403	677	765	876	942	1030

\*DIMENSIONS WITH POLISHED S/S SIDES

\*Oscartek® reserves the right to change, modify, discontinue, or change any features, sizes, or capacity on any model without prior notice.

OSCARTEK®  
512 South Airport Blvd., South San Francisco, CA 94080  
Tel: 855.885.2400 | 650.342.2400 | Fax: 650.342.7400  
sales@oscartek.com | www.oscartek.com





Discover the Art of Display...

Project Name: \_\_\_\_\_

Item #: \_\_\_\_\_ Quantity: \_\_\_\_\_

**BACK WINDOW MODELS: GALA W770BW, W1370BW, W1970BW**

GALA WINE BACK WINDOW - REMOTE				
TECHNICAL FEATURES		MODELS		
Model Name (Model ETL Code)		GALA BW W770 (MUROGALA1P)	GALA BW W1370 (MUROGALA2P)	GALA BW W1970 (MUROGALA3P)
External Dimensions (L-D-H) Inches-MM	Inches MM	*30 1/4" - 26 1/2" - 103 7/8" *768 - 673 - 2640	*53 7/8" - 26 1/2" - 103 7/8" *1368 - 673 - 2640	*77 1/2" - 26 1/2" - 103 7/8" *1968 - 673 - 2640
Crated Dimensions (L-D-H) Inches-MM	Inches MM	38" - 33" - 115" 948 - 828 - 2910	61" - 33" - 115" 1548 - 828 - 2910	85" - 33" - 115" 2148 - 828 - 2910
Refrigeration	Type	Fan - Ventilated	Fan - Ventilated	Fan - Ventilated
Refrigeration Display Area	Type	Deck	Deck	Deck
Number of Glass Doors	#	1	2	3
Wine Rack Shelves	bottle orientation: #	Vertical: 5 Round tubular pyramid: 4 Round tubular Rack: 8 Slanted Plexiglass Rack: 2 Horizontal Plexiglass Rack: 2	Vertical: 10 Round tubular pyramid: 8 Round tubular Rack: 16 Slanted Plexiglass Rack: 4 Horizontal Plexiglass Rack: 4	Vertical: 15 Round tubular pyramid: 12 Round tubular Rack: 24 Slanted Plexiglass Rack: 6 Horizontal Plexiglass Rack: 6
Bottle Capacity (STD size)	#	Vertical: 100 Round tubular pyramid: 104 Round tubular Rack: 72 Slanted Plexiglass Rack: 72 Horizontal Plexiglass Rack: 112	Vertical: 200 Round tubular pyramid: 208 Round tubular Rack: 144 Slanted Plexiglass Rack: 144 Horizontal Plexiglass Rack: 224	Vertical: 300 Round tubular pyramid: 312 Round tubular Rack: 216 Slanted Plexiglass Rack: 216 Horizontal Plexiglass Rack: 336
Operating Temperature	°F	45°F to 58°F	45°F to 58°F	45°F to 58°F
Condensing Units	#	1	2	3
Compressor	Nr./Type	1 / Hermetic	1 / Hermetic	1 / Hermetic
BTU'S @ +14°F Evap Temperature	BTU/H	3400	5300	7680
Electric Supply	(V/Ph/Hz)	220/1/60	220/1/60	220/1/60
Power Consumption	(W/A)	1600/8.2	1800/9.8	2200/11.8
Defrost	Mode/Type	Automatic	Automatic	Automatic
Climatic Class	°F/%RH	75°F-55%RH	75°F-55%RH	75°F-55%RH
Refrigerant Gas	Type	R452a	R452a	R452a
Pipe Size (Suction-Liquid)	(INCHES)	15/32" - 15/64"	35/64" - 5/16"	5/8" - 5/16"
Net Weights	Lb	551	794	970
Crated Weights	Lb	611	854	1030

\*DIMENSIONS WITH POLISHED S/S SIDES

GALA WINE BACK WINDOW - SELF CONTAINED				
TECHNICAL FEATURES		MODELS		
Model Name (Model ETL Code)		GALA BW W770 (MUROGALA1P)	GALA BW W1370 (MUROGALA2P)	GALA BW W1970 (MUROGALA3P)
External Dimensions (L-D-H) Inches-MM	Inches MM	*30 1/4" - 26 1/2" - 111 3/4" *768 - 673 - 2840	*53 7/8" - 26 1/2" - 111 3/4" *1368 - 673 - 2840	*77 1/2" - 26 1/2" - 111 3/4" *1968 - 673 - 2840
Crated Dimensions (L-D-H) Inches-MM	Inches MM	38" - 33" - 115" 948 - 828 - 2910	61" - 33" - 115" 1548 - 828 - 2910	85" - 33" - 115" 2148 - 828 - 2910
Refrigeration	Type	Fan - Ventilated	Fan - Ventilated	Fan - Ventilated
Refrigeration Display Area	Type	Deck	Deck	Deck
Number of Glass Doors	#	1	2	3
Wine Rack Shelves	bottle orientation: #	Vertical: 5 Round tubular pyramid: 4 Round tubular Rack: 8 Slanted Plexiglass Rack: 2 Horizontal Plexiglass Rack: 2	Vertical: 10 Round tubular pyramid: 8 Round tubular Rack: 16 Slanted Plexiglass Rack: 4 Horizontal Plexiglass Rack: 4	Vertical: 15 Round tubular pyramid: 12 Round tubular Rack: 24 Slanted Plexiglass Rack: 6 Horizontal Plexiglass Rack: 6
Bottle Capacity (STD size)	#	Vertical: 100 Round tubular pyramid: 104 Round tubular Rack: 72 Slanted Plexiglass Rack: 72 Horizontal Plexiglass Rack: 112	Vertical: 200 Round tubular pyramid: 208 Round tubular Rack: 144 Slanted Plexiglass Rack: 144 Horizontal Plexiglass Rack: 224	Vertical: 300 Round tubular pyramid: 312 Round tubular Rack: 216 Slanted Plexiglass Rack: 216 Horizontal Plexiglass Rack: 336
Operating Temperature	°F	45°F to 58°F	45°F to 58°F	45°F to 58°F
Condensing Units	#	1	2	3
Compressor	Nr./Type	1 / Hermetic	1 / Hermetic	1 / Hermetic
BTU'S @ +14°F Evap Temperature	BTU/H	3400	5300	7680
Electric Supply	(V/Ph/Hz)	220/1/60	220/1/60	220/1/60
Power Consumption	(W/A)	1600/8.2	1800/9.8	2200/11.8
Defrost	Mode/Type	Automatic	Automatic	Automatic
Climatic Class	°F/%RH	75°F-55%RH	75°F-55%RH	75°F-55%RH
Refrigerant Gas	Type	R455/R454c	R455/R454c	R455/R454c
Pipe Size (Suction-Liquid)	(INCHES)	15/32" - 15/64"	35/64" - 5/16"	5/8" - 5/16"
Net Weights	Lb	551	794	970
Crated Weights	Lb	611	854	1030

\*DIMENSIONS WITH POLISHED S/S SIDES

\*Oscartek® reserves the right to change, modify, discontinue, or change any features, sizes, or capacity on any model without prior notice.

OSCARTEK®  
512 South Airport Blvd., South San Francisco, CA 94080  
Tel: 855.885.2400 | 650.342.2400 | Fax: 650.342.7400  
sales@oscartek.com | www.oscartek.com





Discover the Art of Display...

Project Name: \_\_\_\_\_

Item #: \_\_\_\_\_ Quantity: \_\_\_\_\_

**PASS THROUGH MODELS: GALA W770PT, W1370PT, W1970PT**

GALA WINE PASS THROUGH - REMOTE				
TECHNICAL FEATURES		MODELS		
Model Name (Model ETL Code)		GALA PT W770 (MUROGALA1P)	GALA PT W1370 (MUROGALA2P)	GALA PT W1970 (MUROGALA3P)
External Dimensions (L-D-H) Inches-MM	Inches MM	*30 1/4" - 26 1/2" - 103 7/8" *768 - 673 - 2640	*53 7/8" - 26 1/2" - 103 7/8" *1368 - 673 - 2640	*77 1/2" - 26 1/2" - 103 7/8" *1968 - 673 - 2640
Crated Dimensions (L-D-H) Inches-MM	Inches MM	38" - 33" - 115" 948 - 828 - 2910	61" - 33" - 115" 1548 - 828 - 2910	85" - 33" - 115" 2148 - 828 - 2910
Refrigeration	Type	Fan - Ventilated	Fan - Ventilated	Fan - Ventilated
Refrigeration Display Area	Type	Deck	Deck	Deck
Number of Glass Doors	#	1	2	3
Wine Rack Shelves	bottle orientation: #	Vertical: 5 Round tubular pyramid: 4 Round tubular Rack: 8 Slanted Plexiglass Rack: 2 Horizontal Plexiglass Rack: 2	Vertical: 10 Round tubular pyramid: 8 Round tubular Rack: 16 Slanted Plexiglass Rack: 4 Horizontal Plexiglass Rack: 4	Vertical: 15 Round tubular pyramid: 12 Round tubular Rack: 24 Slanted Plexiglass Rack: 6 Horizontal Plexiglass Rack: 6
Bottle Capacity (STD size)	bottle orientation: #	Vertical: 100 Round tubular pyramid: 104 Round tubular Rack: 72 Slanted Plexiglass Rack: 72 Horizontal Plexiglass Rack: 112	Vertical: 200 Round tubular pyramid: 208 Round tubular Rack: 144 Slanted Plexiglass Rack: 144 Horizontal Plexiglass Rack: 224	Vertical: 300 Round tubular pyramid: 312 Round tubular Rack: 216 Slanted Plexiglass Rack: 216 Horizontal Plexiglass Rack: 336
Operating Temperature	°F	45°F to 58°F	45°F to 58°F	45°F to 58°F
Condensing Units	#	1	2	3
Compressor	Nr./Type	1 / Hermetic	1 / Hermetic	1 / Hermetic
BTU'S @ +14°F Evap Temperature	BTU/H	3400	5300	7680
Electric Supply	(V/Ph/Hz)	220/1/60	220/1/60	220/1/60
Power Consumption	(W/A)	1600/8.2	1800/9.8	2200/11.8
Defrost	Mode/Type	Automatic	Automatic	Automatic
Climatic Class	°F/%RH	75°F-55%RH	75°F-55%RH	75°F-55%RH
Refrigerant Gas	Type	R452a	R452a	R452a
Pipe Size (Suction-Liquid)	(INCHES)	15/32" - 15/64"	35/64" - 5/16"	5/8" - 5/16"
Net Weights	Lb	573	838	1036
Crated Weights	Lb	633	898	1096

\*DIMENSIONS WITH POLISHED S/S SIDES

GALA WINE PASS THROUGH - SELF CONTAINED				
TECHNICAL FEATURES		MODELS		
Model Name (Model ETL Code)		GALA PT W770 (MUROGALA1P)	GALA PT W1370 (MUROGALA2P)	GALA PT W1970 (MUROGALA3P)
External Dimensions (L-D-H) Inches-MM	Inches MM	*30 1/4" - 26 1/2" - 111 3/4" *768 - 673 - 2840	*53 7/8" - 26 1/2" - 111 3/4" *1368 - 673 - 2840	*77 1/2" - 26 1/2" - 111 3/4" *1968 - 673 - 2840
Crated Dimensions (L-D-H) Inches-MM	Inches MM	38" - 33" - 115" 948 - 828 - 2910	61" - 33" - 115" 1548 - 828 - 2910	85" - 33" - 115" 2148 - 828 - 2910
Refrigeration	Type	Fan - Ventilated	Fan - Ventilated	Fan - Ventilated
Refrigeration Display Area	Type	Deck	Deck	Deck
Number of Glass Doors	#	1	2	3
Wine Rack Shelves	bottle orientation: #	Vertical: 5 Round tubular pyramid: 4 Round tubular Rack: 8 Slanted Plexiglass Rack: 2 Horizontal Plexiglass Rack: 2	Vertical: 10 Round tubular pyramid: 8 Round tubular Rack: 16 Slanted Plexiglass Rack: 4 Horizontal Plexiglass Rack: 4	Vertical: 15 Round tubular pyramid: 12 Round tubular Rack: 24 Slanted Plexiglass Rack: 6 Horizontal Plexiglass Rack: 6
Bottle Capacity (STD size)	bottle orientation: #	Vertical: 100 Round tubular pyramid: 104 Round tubular Rack: 72 Slanted Plexiglass Rack: 72 Horizontal Plexiglass Rack: 112	Vertical: 200 Round tubular pyramid: 208 Round tubular Rack: 144 Slanted Plexiglass Rack: 144 Horizontal Plexiglass Rack: 224	Vertical: 300 Round tubular pyramid: 312 Round tubular Rack: 216 Slanted Plexiglass Rack: 216 Horizontal Plexiglass Rack: 336
Operating Temperature	°F	45°F to 58°F	45°F to 58°F	45°F to 58°F
Condensing Units	#	1	2	3
Compressor	Nr./Type	1 / Hermetic	1 / Hermetic	1 / Hermetic
BTU'S @ +14°F Evap Temperature	BTU/H	3400	5300	7680
Electric Supply	(V/Ph/Hz)	220/1/60	220/1/60	220/1/60
Power Consumption	(W/A)	1600/8.2	1800/9.8	2200/11.8
Defrost	Mode/Type	Automatic	Automatic	Automatic
Climatic Class	°F/%RH	75°F-55%RH	75°F-55%RH	75°F-55%RH
Refrigerant Gas	Type	R455/R454c	R455/R454c	R455/R454c
Pipe Size (Suction-Liquid)	(INCHES)	15/32" - 15/64"	35/64" - 5/16"	5/8" - 5/16"
Net Weights	Lb	573	838	1036
Crated Weights	Lb	633	898	1096

\*DIMENSIONS WITH POLISHED S/S SIDES

\*Oscartek® reserves the right to change, modify, discontinue, or change any features, sizes, or capacity on any model without prior notice.

OSCARTEK®  
512 South Airport Blvd., South San Francisco, CA 94080  
Tel: 855.885.2400 | 650.342.2400 | Fax: 650.342.7400  
sales@oscartek.com | www.oscartek.com

