

# GEM/ITALIA/ROSA COMBI

## Combi/Self Serve Refrigerated Top Showcase

### STANDARD FEATURES

- LED lighting system
- Extra clear glass
- Refrigerated top deck
- Patented upper sliding glass system
- Available in 3 heights: 45"H, 47"H, 49"H
- Cases ship standard unfinished

### OPTIONS

- Non-refrigerated top deck
- Stainless steel dry/hot top deck (requires additional 220V/1ph/20 Amps)
- Dry/hot glass shelf
- Stainless steel position step
- Working top perimeter (brushed s/s, corian, black HPL, granite)
- Remote condensing unit
- Casters



GEM/ITALIA/ROSA COMBI - REFRIGERATED TOP				
TECHNICAL FEATURES		MODELS		
		COMBI 1000RT	COMBI 1250RT	COMBI 1500RT
External Dimensions (L-D-H)	Inches	39 3/8" - 37 1/2" - 45 1/4"	49 3/16" - 37 1/2" - 45 1/4"	59 1/16" - 37 1/2" - 45 1/4"
	Inches-MM	1000 - 953 - 1150	1250 - 953 - 1150	1500 - 953 - 1150
Crated Dimensions (L-D-H)	Inches	46" - 45" - 51"	56" - 45" - 51"	66" - 45" - 51"
	Inches-MM	1168 - 1143 - 1295	1422 - 1143 - 1295	1676 - 1143 - 1295
Refrigeration	Type	R404A	R404A	R404A
Refrigeration Display Area	Type	Top Deck & Bottom Display	Top Deck & Bottom Display	Top Deck & Bottom Display
Operating Temperature	°F	41°F	41°F	41°F
Compressor	Nr./Type	Hermetic	Hermetic	Hermetic
BTU'S @ +14°F Evap Temperature	BTU'S	5200 BTU'S	5900 BTU'S	7150 BTU'S
Electric Supply	(V/Ph/Hz)	230/1/50 (EU) 208-220/1/60 (USA)	230/1/50 (EU) 208-220/1/60 (USA)	230/1/50 (EU) 208-220/1/60 (USA)
Power Consumption	(A)	9A	11A	13A
Defrost	Mode/Type	Electric	Electric	Electric
Net Weights	Kg/Lb	142Kgs / 314Lbs	165Kgs / 364Lbs	249Kgs / 550Lbs
Crated Weights	Kg/Lb	163Kgs / 360Lbs	185Kgs / 410Lbs	294Kgs / 650Lbs

\* DIMENSIONS ARE WITHOUT SIDE PANELS

\* Manufacturer reserves the right to change specifications without notice. Not responsible for error and omissions.



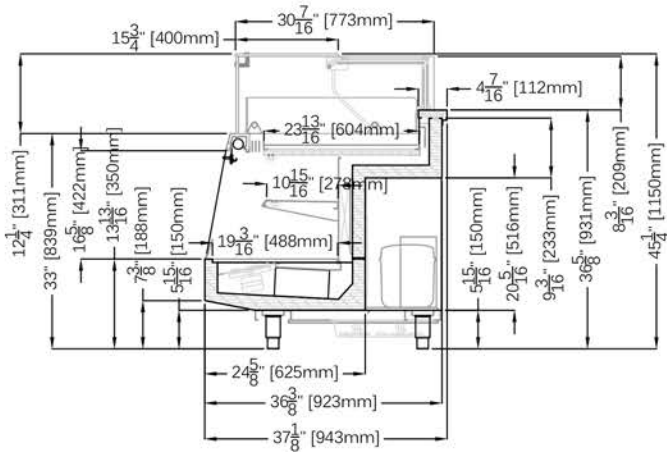
361-367 Beach Road, Burlingame, CA 94010  
 Tel: 855.885.2400 | 650.342.2400 | Fax: 650.342.7400  
 sales@oscartek.com | www.oscartek.com



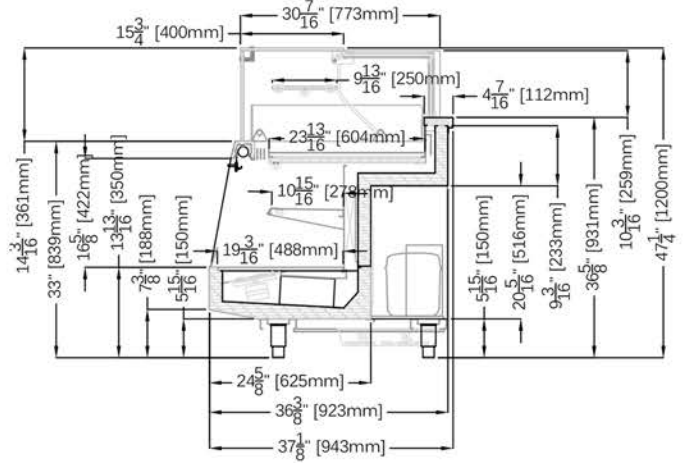
# GEM/ITALIA/ROSA COMBI

# Combi/Self Serve Refrigerated Top Showcase

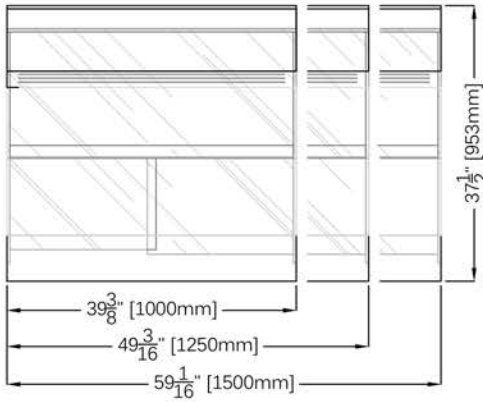
COMBI 1 - 45 1/4"H



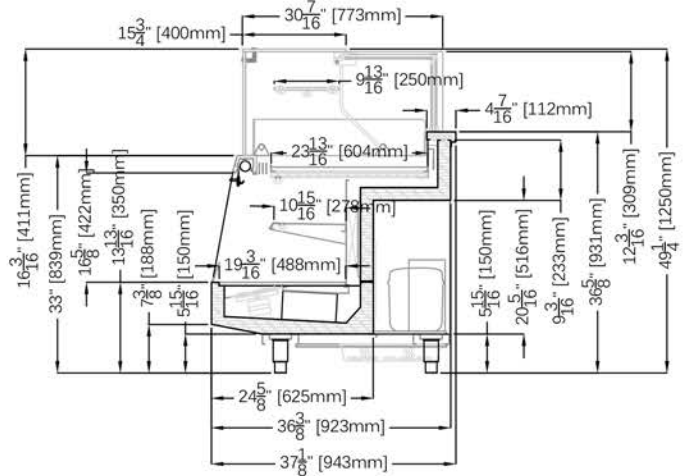
COMBI 2 - 47 1/4"H



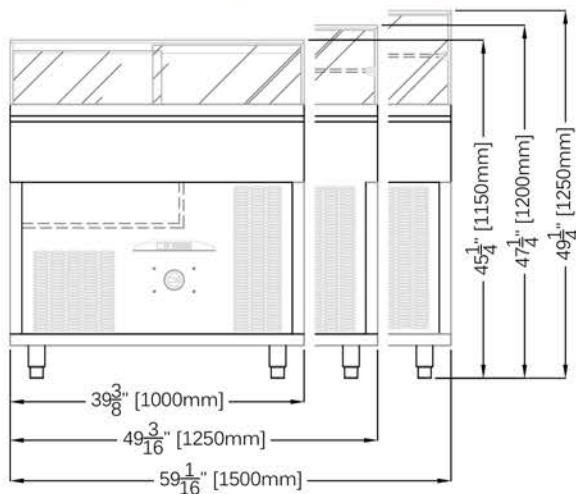
PLAN VIEWS



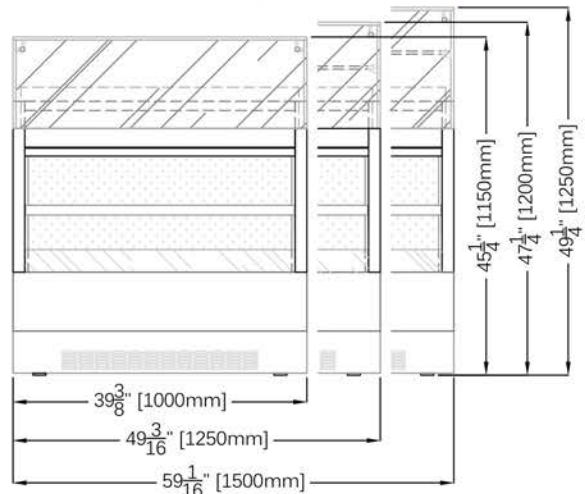
COMBI 3 - 49 1/4"H



REAR ELEVATIONS (OPERATOR SIDE)



FRONT ELEVATIONS (CUSTOMER SIDE)



\* Manufacturer reserves the right to change specifications without notice. Not responsible for error and omissions.



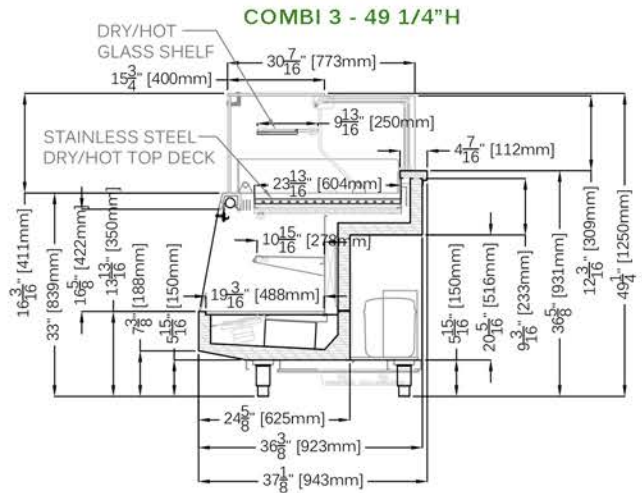
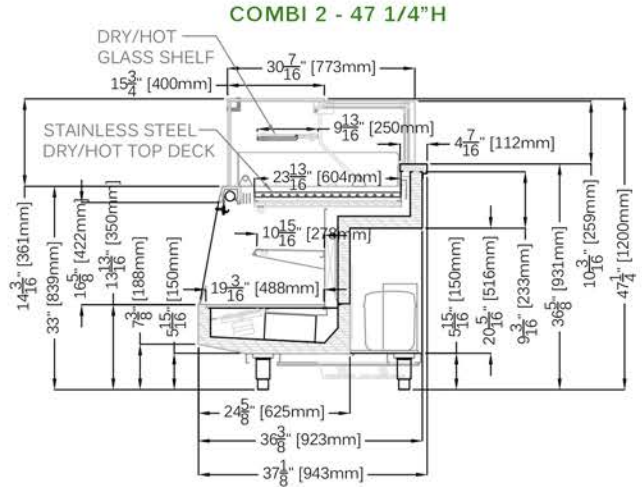
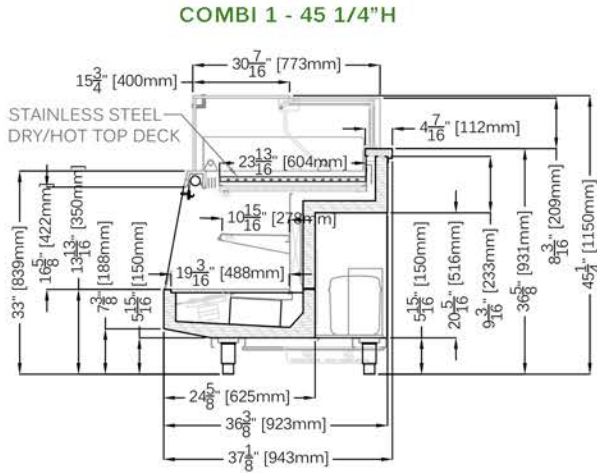
361-367 Beach Road, Burlingame, CA 94010  
 Tel: 855.885.2400 | 650.342.2400 | Fax: 650.342.7400  
 sales@oscartek.com | www.oscartek.com



# GEM/ITALIA/ROSA COMBI

# Combi/Self Serve Refrigerated Top Showcase

OPTIONAL:  
GEM/ITALIA/ROSA COMBI - DRY/HOT TOP



\* Manufacturer reserves the right to change specifications without notice. Not responsible for error and omissions.



361-367 Beach Road, Burlingame, CA 94010  
Tel: 855.885.2400 | 650.342.2400 | Fax: 650.342.7400  
sales@oscartek.com | www.oscartek.com



# GEM/ITALIA/ROSA COMBI

## Combi/Self Serve Dry Top Showcase

### STANDARD FEATURES

- LED lighting system
- Extra clear glass
- Non-refrigerated top deck
- Patented upper sliding glass system
- Available in 3 heights: 45"H, 47"H, 49"H
- Cases ship standard unfinished

### OPTIONS

- Refrigerated top
- Stainless steel dry/hot top deck (requires additional 220V/1ph/20 Amps)
- Dry/hot glass shelf
- Stainless steel position step
- Working top perimeter (brushed s/s, corian, black HPL, granite)
- Remote condensing unit
- Casters



GEM/ITALIA/ROSA COMBI - DRY TOP				
TECHNICAL FEATURES		MODELS		
		COMBI 1000DT	COMBI 1250DT	COMBI 1500DT
External Dimensions (L-D-H)	Inches	39 3/8" - 38 15/16" - 45 1/4"	49 3/16" - 38 15/16" - 45 1/4"	59 1/16" - 38 15/16" - 45 1/4"
	MM	1000 - 989 - 1150	1250 - 989 - 1150	1500 - 989 - 1150
Crated Dimensions (L-D-H)	Inches	46" - 45" - 51"	56" - 45" - 51"	66" - 45" - 51"
	MM	1168 - 1143 - 1295	1422 - 1143 - 1295	1676 - 1143 - 1295
Refrigeration	Type	R404A	R404A	R404A
Refrigeration Display Area	Type	Bottom Display	Bottom Display	Bottom Display
Operating Temperature	°F	41°F	41°F	41°F
Compressor	Nr./Type	Hermetic	Hermetic	Hermetic
BTU'S @ +14°F Evap Temperature	BTU'S	4600 BTU'S	5600 BTU'S	6850 BTU'S
Electric Supply	(V/Ph/Hz)	230/1/50 (EU) 208-220/1/60 (USA)	230/1/50 (EU) 208-220/1/60 (USA)	230/1/50 (EU) 208-220/1/60 (USA)
Power Consumption	(A)	7A	9A	12A
Defrost	Mode/Type	Electric	Electric	Electric
Net Weights	Kg/Lb	142Kgs / 314Lbs	165Kgs / 364Lbs	249Kgs / 550Lbs
Crated Weights	Kg/Lb	163Kgs / 360Lbs	185Kgs / 410Lbs	294Kgs / 650Lbs

\* DIMENSIONS ARE WITHOUT SIDE PANELS

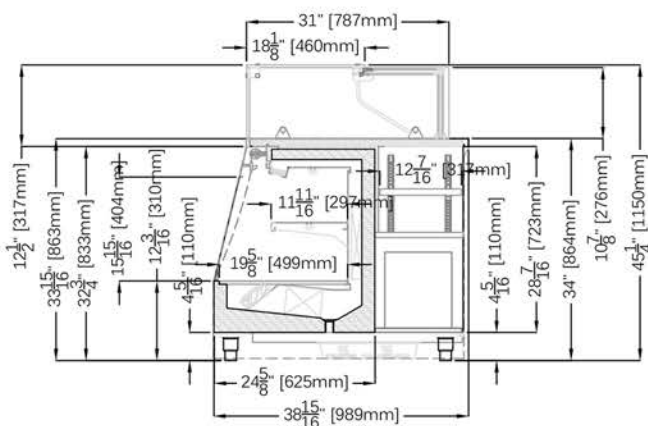
\* Manufacturer reserves the right to change specifications without notice. Not responsible for error and omissions.



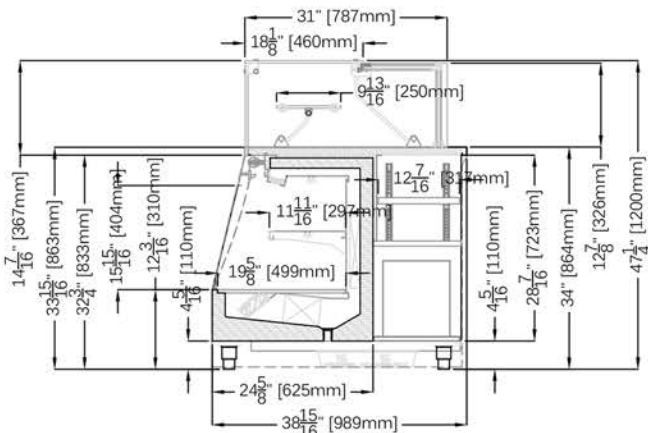
361-367 Beach Road, Burlingame, CA 94010  
 Tel: 855.885.2400 | 650.342.2400 | Fax: 650.342.7400  
 sales@oscartek.com | www.oscartek.com



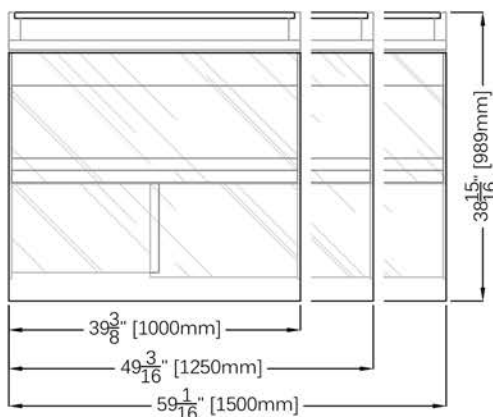
COMBI 1 - 45 1/4"H



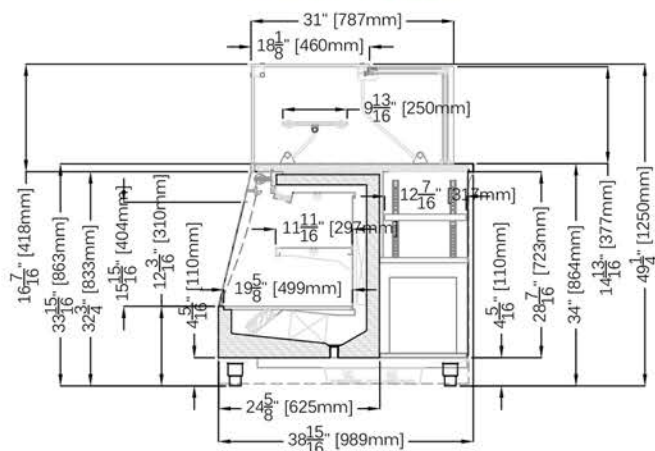
COMBI 2 - 47 1/4\"/>



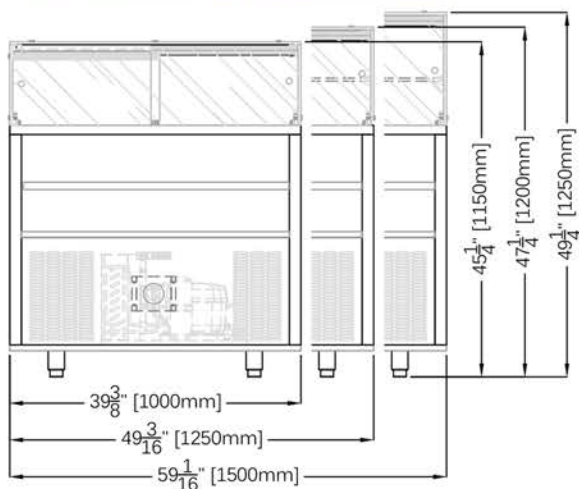
PLAN VIEWS



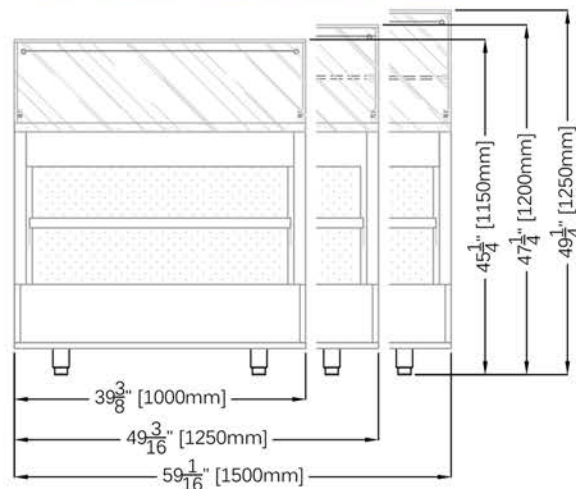
COMBI 3 - 49 1/4\"/>



REAR ELEVATIONS (OPERATOR SIDE)



FRONT ELEVATIONS (CUSTOMER SIDE)



\* Manufacturer reserves the right to change specifications without notice. Not responsible for error and omissions.