



Discover the Art of Display...

Project Name: _____

Item #: _____ Quantity: _____



GEM R4 COMBI H2 Refrigerated Top & Bottom Showcase

MODELS: GEM R4 COMBI H2 1000, GEM R4 COMBI H2 1300, GEM R4 COMBI H2 1500, GEM R4 COMBI H2 1700, GEM R4 COMBI H2 2000

STANDARD FEATURES

- Gem R4 Combi H2: refrigerated top and bottom
- Extra clear glass: front and top glasses with front air baffle
- Heated glass sides
- All tempered glass
- Diffused LED lighting 3000°K
- Sliding acrylic back doors
- Stainless steel lower interior foam tub
- Galvanized chassis structure
- Cases ship standard unfinished front and polished stainless steel skin sides

Optional RAL color front panel and side panels. Optional include slide glasses



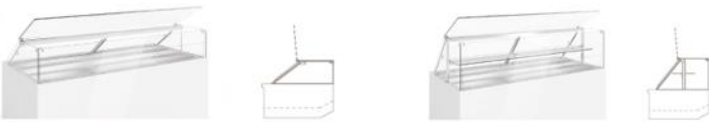
Visit our website for more finishing options and RAL colors www.oscartek.com

OPTIONS

- Switch control for refrigerated top to non-refrigerated top
- Available height – 53 1/8”H with (1) non-refrigerated shelf
- R4UP glass top – Lift up front top glass
- S2 glass top – Tilt down front glass hinged
- Work top perimeter (brushed s/s, corian, granite)
- Remote condensing unit
- Epoxy RAL color interior and exterior over stainless steel
- RAL color/custom plastic wood laminate exterior front and sides
- Unfinished panels to accept millwork by others
- Condensate heated pan
- Casters

OPTIONAL GLASS TOPS

R4UP – 47 1/4”H: Lift up front top glass without shelf
R4UP – 53 1/8”H: Lift up front top glass with non-refrigerated shelf



S2 – 47 1/4”H: Tilt down front glass hinged without shelf
S2 – 53 1/8”H: Tilt down front glass hinged with non-refrigerated shelf



*Oscartek reserves the right to change, modify, discontinue, or change any features, sizes, or capacity on any model without prior notice.

OSCARTEK®
512 South Airport Blvd., South San Francisco, CA 94080
Tel: 650.342.2400 | Fax: 650.342.7400
www.oscartek.com

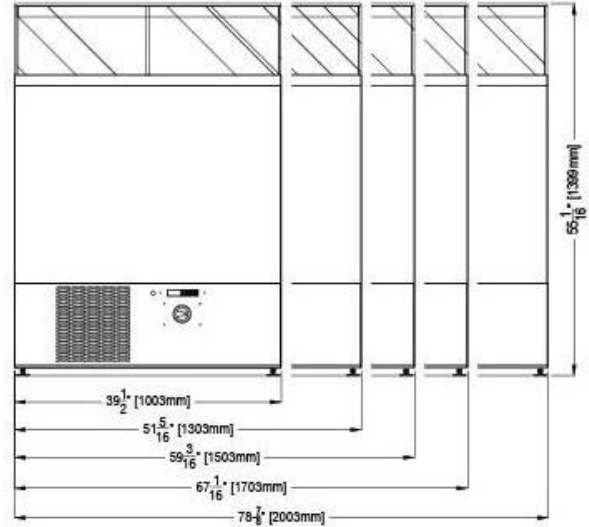
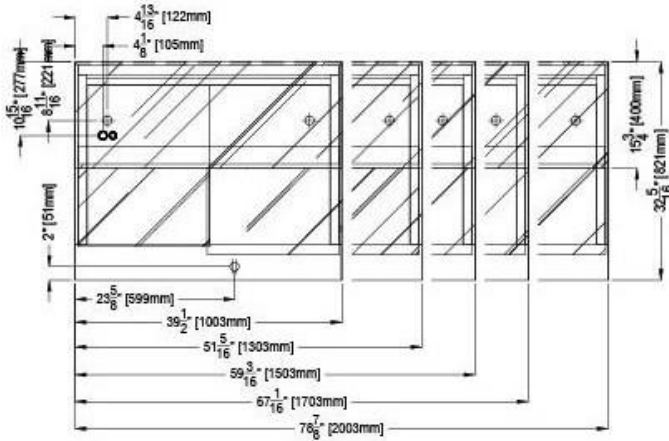


GEM R4 COMBI H2 REFRIGERATED TOP & BOTTOM

MODELS: MODELS: GEM R4 COMBI H2 1000, GEM R4 COMBI H2 1300, GEM R4 COMBI H2 1500, GEM R4 COMBI H2 1700, GEM R4 COMBI H2 2000

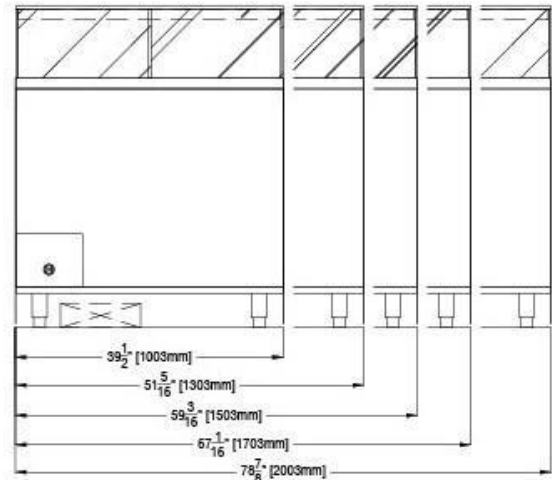
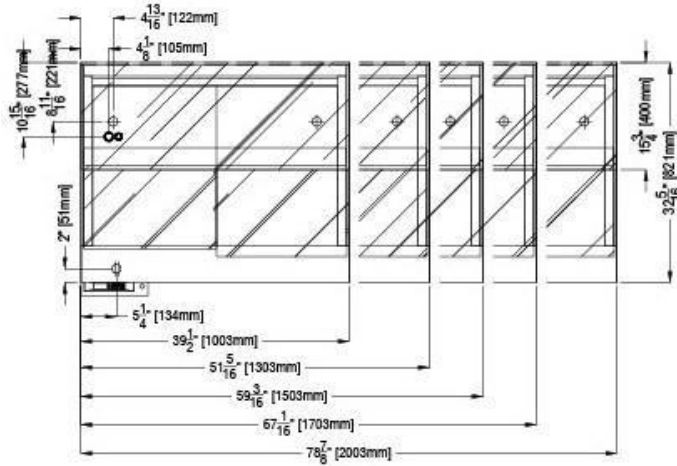
GEM R4 COMBI H2 (SELF CONTAINED)

PLAN VIEWS & REAR ELEVATION (OPERATOR SIDE)



GEM R4 COMBI H2 (REMOTE)

PLAN VIEWS & REAR ELEVATIONS (OPERATOR SIDE)



ELECTRICAL LEGEND

∞	REFRIGERATION LINES
⊕ ¹	DRAIN
⊕	POWER

*Oscartek reserves the right to change, modify, discontinue, or change any features, sizes, or capacity on any model without prior notice.



Discover the Art of Display...

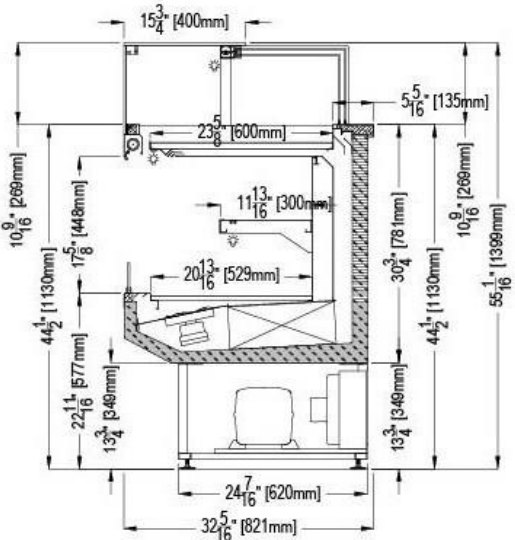
Project Name: _____
 Item #: _____ Quantity: _____

GEM R4 COMBI H2 REFRIGERATED TOP & BOTTOM

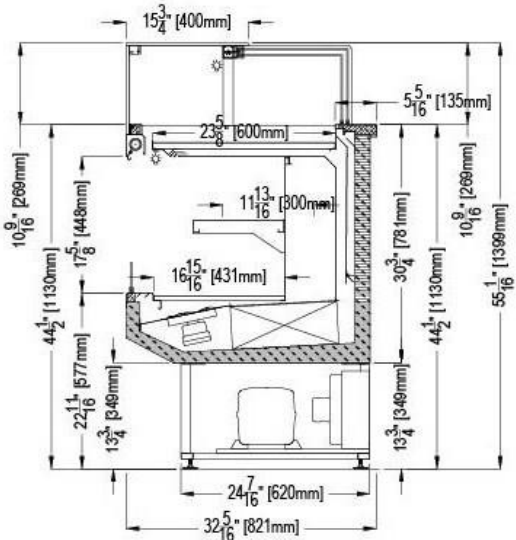
MODELS: MODELS: GEM R4 COMBI H2 1000, GEM R4 COMBI H2 1300, GEM R4 COMBI H2 1500, GEM R4 COMBI H2 1700, GEM R4 COMBI H2 2000

GEM R4 COMBI H2 (SELF CONTAINED) SECTION VIEWS

STANDARD: REFRIGERATED TOP & BOTTOM

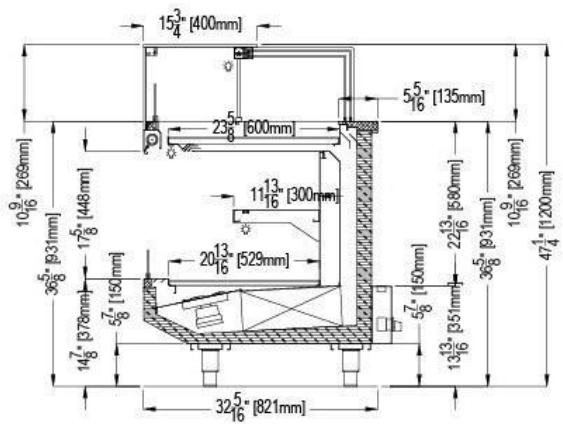


OPTIONAL: REFRIGERATED TOP & BOTTOM WITH SWITCH CONTROL FOR REFRIGERATED TOP TO NON-REFRIGERATED TOP

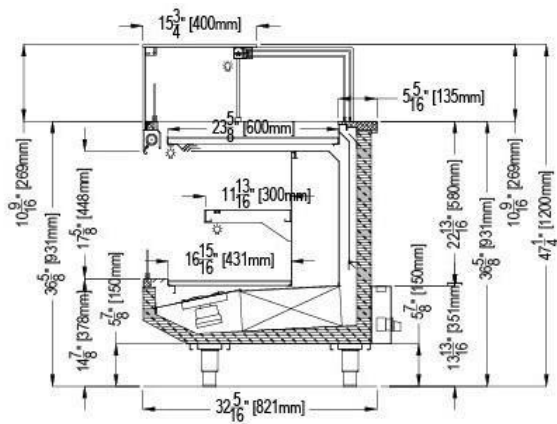


GEM R4 COMBI H2 (REMOTE) SECTION VIEWS

STANDARD: REFRIGERATED TOP & BOTTOM



OPTIONAL: REFRIGERATED TOP & BOTTOM WITH SWITCH CONTROL FOR REFRIGERATED TOP TO NON-REFRIGERATED TOP



*Oscartek reserves the right to change, modify, discontinue, or change any features, sizes, or capacity on any model without prior notice.

OSCARTEK®
 512 South Airport Blvd., South San Francisco, CA 94080
 Tel: 650.342.2400 | Fax: 650.342.7400
 www.oscartek.com

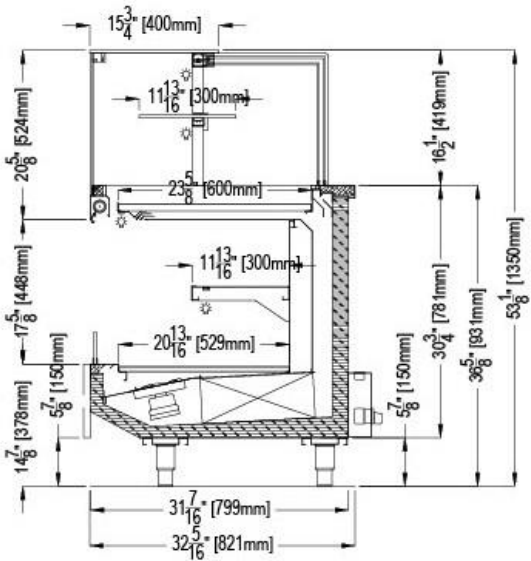


GEM R4 COMBI H2 REFRIGERATED TOP & BOTTOM

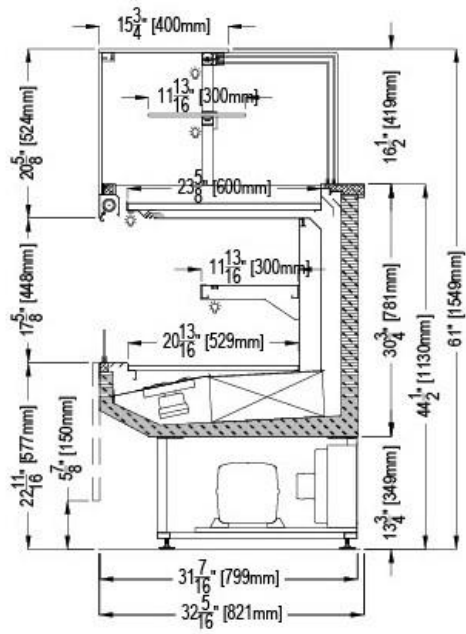
MODELS: MODELS: GEM R4 COMBI H2 1000, GEM R4 COMBI H2 1300, GEM R4 COMBI H2 1500, GEM R4 COMBI H2 1700, GEM R4 COMBI H2 2000

OPTIONAL: GEM R4 COMBI H2 (SELF CONTAINED & REMOTE) SECTION VIEWS

**GEM R4 COMBI H2 (REMOTE)
WITH NON-REFRIGERATED SHELF
REFRIGERATED TOP & BOTTOM**



**GEM R4 COMBI H2 (SELF CONTAINED)
WITH NON-REFRIGERATED SHELF
REFRIGERATED TOP & BOTTOM**



*Oscartek reserves the right to change, modify, discontinue, or change any features, sizes, or capacity on any model without prior notice.



Project Name: _____
 Item #: _____ Quantity: _____

GEM R4 COMBI H2 REFRIGERATED TOP & BOTTOM

MODELS: MODELS: GEM R4 COMBI H2 1000, GEM R4 COMBI H2 1300, GEM R4 COMBI H2 1500, GEM R4 COMBI H2 1700, GEM R4 COMBI H2 2000

GEM R4 COMBI H2 - REFRIGERATED TOP & BOTTOM						
TECHNICAL FEATURES		MODELS				
		GEM R4 COMBI H2 1000 (GMCOMR43912H2)	GEM R4 COMBI H2 1300 (GMCOMR45112H2)	GEM R4 COMBI H2 1500 (GMCOMR45912H2)	GEM R4 COMBI H2 1700 (GMCOMR46712H2)	GEM R4 COMBI H2 2000 (GMCOMR47912H2)
External Dimensions (L-D-H) Inches-MM	Inches MM	*39 1/2" - 32 5/16" - 55 1/16" *1003 - 821 - 1399	*51 5/16" - 32 5/16" - 55 1/16" *1303 - 821 - 1399	*59 3/16" - 32 5/16" - 55 1/16" *1503 - 821 - 1399	*67 1/6" - 32 5/16" - 55 1/16" *1703 - 821 - 1399	*78 7/8" - 32 5/16" - 55 1/16" *2003 - 821 - 1399
Crated Dimensions (L-D-H) Inches-MM	Inches MM	45" - 40 1/2" - 62" 1143 - 1030 - 1574	60" - 40 1/2" - 62" 1500 - 1030 - 1574	66" - 40 1/2" - 62" 1676 - 1030 - 1574	73" - 40 1/2" - 62" 1854 - 1030 - 1574	85" - 40 1/2" - 62" 2159 - 1030 - 1574
Refrigeration	Type	Fan Ventilated	Fan Ventilated	Fan Ventilated	Fan Ventilated	Fan Ventilated
Refrigeration Display Area	Type	Top & Bottom Display	Top & Bottom Display	Top & Bottom Display	Top & Bottom Display	Top & Bottom Display
Operating Temperature	°F	39°F	39°F	39°F	39°F	39°F
Compressor	Nr./Type	1 / Hermetic	1 / Hermetic	1 / Hermetic	1 / Hermetic	1 / Hermetic
BTU'S @ +14°F Evap Temperature	BTU'S	4300	4700	5200	5700	6000
Electric Supply	(V/Ph/Hz)	208-220/1/60	208-220/1/60	208-220/1/60	208-220/1/60	208-220/1/60
Power Consumption	(W/A)	1350/6.8	1550/7.5	1750/8.8	1850/9.1	2000/10.5
Defrost	Mode/Type	Electric	Electric	Electric	Electric	Electric
Climatic Class	°F/H.R.	75°F-55%RH	75°F-55%RH	75°F-55%RH	75°F-55%RH	75°F-55%RH
Refrigerant Gas	Type	R404A / R452A	R404A / R452A	R404A / R452A	R404A / R452A	R404A / R452A
Pipe Size (Inches)	Suction, Liquid	5/8", 5/16"	5/8", 5/16"	5/8", 5/16"	5/8", 5/16"	5/8", 5/16"
Net Weights	Lbs	350	395	440	510	550
Crated Weights	Lbs	400	445	490	560	600

*DIMENSIONS ARE WITH POLISHED S/S SKIN SIDES

*Oscartek reserves the right to change, modify, discontinue, or change any features, sizes, or capacity on any model without prior notice.

OSCARTEK®
 512 South Airport Blvd., South San Francisco, CA 94080
 Tel: 650.342.2400 | Fax: 650.342.7400
 www.oscartek.com

