



Optional RAL color front panel



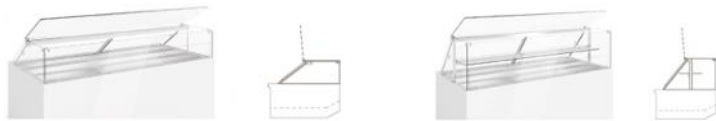
Visit our website for more finishing options and RAL colors

www.oscartek.com

OPTIONAL GLASS TOPS

R4UP – 47 1/4”H: Lift up front top glass without shelf

R4UP – 53 1/8”H: Lift up front top glass with non-refrigerated shelf



S2 – 47 1/4”H: Tilt down front glass hinged without shelf

S2 – 53 1/8”H: Tilt down front glass hinged with non-refrigerated shelf



GEM R4 COMBI M1

Refrigerated Top & Bottom Showcase

MODELS: GEM R4 COMBI M1 1000, GEM R4 COMBI M1 1300, GEM R4 COMBI M1 1500, GEM R4 COMBI M1 1700, GEM R4 COMBI M1 2000

STANDARD FEATURES

- Gem R4 Combi M1: refrigerated top and bottom
- Extra clear glass: front and top glasses with front air baffle
- Heated glass sides
- All tempered glass
- Diffused LED lighting 3000°K
- Sliding acrylic back doors
- High polished stainless steel interior
- Stainless steel lower interior foam tub
- Galvanized chassis structure
- Rear ventilation
- Cases ship standard unfinished front and polished stainless steel skin sides

OPTIONS

- Available height – 53 1/8”H with (1) non-refrigerated shelf
- R4UP glass top – Lift up front top glass
- S2 glass top – Tilt down front glass hinged
- Work top perimeter (brushed s/s, corian, granite)
- Remote condensing unit
- Epoxy RAL color interior and exterior over stainless steel
- RAL color/custom plastic wood laminate exterior front and sides
- Unfinished panels to accept millwork by others
- Condensate heated pan
- Casters

*Oscartek reserves the right to change, modify, discontinue, or change any features, sizes, or capacity on any model without prior notice.

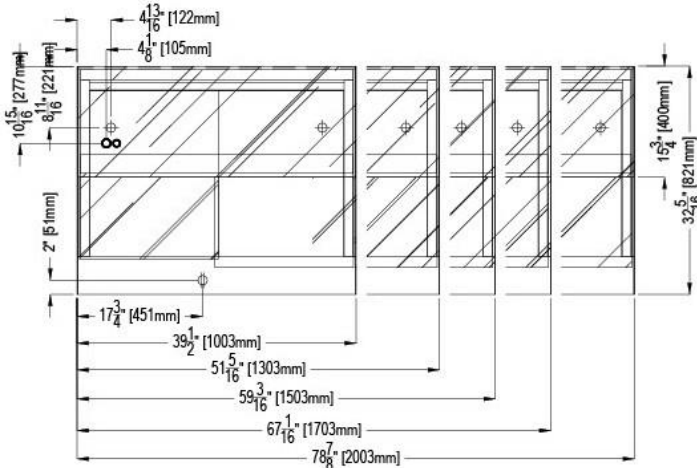


Project Name: _____
 Item #: _____ Quantity: _____

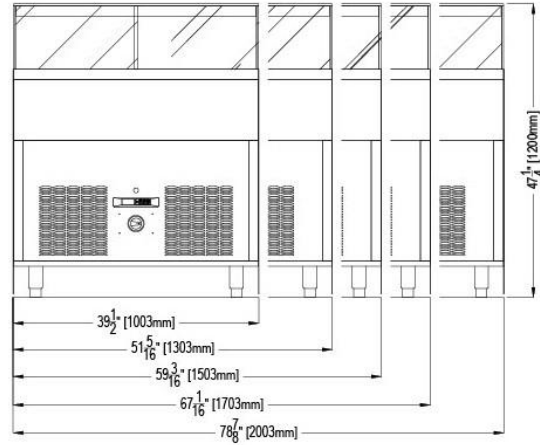
GEM R4 COMBI M1 REFRIGERATED TOP & BOTTOM

MODELS: GEM R4 COMBI M1 1000, GEM R4 COMBI M1 1300, GEM R4 COMBI M1 1500, GEM R4 COMBI M1 1700, GEM R4 COMBI M1 2000

GEM R4 COMBI M1 PLAN VIEWS



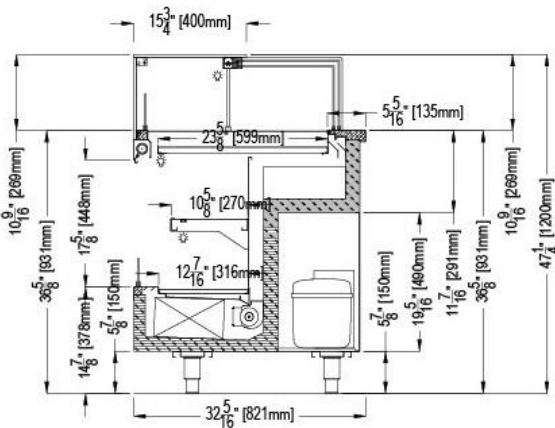
GEM R4 COMBI M1 REAR ELEVATIONS (OPERATOR SIDE)



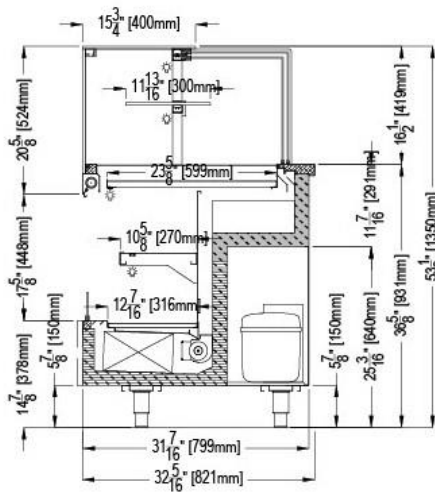
ELECTRICAL LEGEND	
∞	REFRIGERATION LINES
ϕ	DRAIN
ϕ	POWER

GEM R4 COMBI M1 SECTION VIEWS

STANDARD: 47-1/4" H



OPTIONAL: AVAILABLE IN 53-1/8" H WITH NON-REFRIGERATED SHELF



*Oscartek reserves the right to change, modify, discontinue, or change any features, sizes, or capacity on any model without prior notice.

OSCARTEK®
 512 South Airport Blvd., South San Francisco, CA 94080
 Tel: 650.342.2400 | Fax: 650.342.7400
 www.oscartek.com





Project Name: _____
 Item #: _____ Quantity: _____

GEM R4 COMBI M1 REFRIGERATED TOP & BOTTOM

MODELS: GEM R4 COMBI M1 1000, GEM R4 COMBI M1 1300, GEM R4 COMBI M1 1500, GEM R4 COMBI M1 1700, GEM R4 COMBI M1 2000

GEM R4 COMBI M1 - REFRIGERATED TOP & BOTTOM						
TECHNICAL FEATURES		MODELS				
		GEM R4 COMBI M1 1000 (GMCOMR43912M1)	GEM R4 COMBI M1 1300 (GMCOMR45112M1)	GEM R4 COMBI M1 1500 (GMCOMR45912M1)	GEM R4 COMBI M1 1700 (GMCOMR46712M1)	GEM R4 COMBI M1 2000 (GMCOMR47912M1)
External Dimensions (L-D-H) Inches-MM	Inches MM	*39 1/2" - 32 5/16" - 47 1/4" *1003 - 821 - 1200	*51 5/16" - 32 5/16" - 47 3/4" *1303 - 821 - 1200	*59 3/16" - 32 5/16" - 47 1/4" *1503 - 821 - 1200	*67 1/16" - 32 5/16" - 47 1/4" *1703 - 821 - 1200	*78 7/8" - 32 5/16" - 47 1/4" *2003 - 821 - 1200
Crated Dimensions (L-D-H) Inches-MM	Inches MM	45" - 40 1/2" - 55 1/4" 1143 - 1030 - 1400	60" - 40 1/2" - 55 1/4" 1500 - 1030 - 1400	66" - 40 1/2" - 55 1/4" 1676 - 1030 - 1400	73" - 40 1/2" - 55 1/4" 1854 - 1030 - 1400	85" - 40 1/2" - 55 1/4" 2159 - 1030 - 1400
Refrigeration	Type	Fan Ventilated	Fan Ventilated	Fan Ventilated	Fan Ventilated	Fan Ventilated
Refrigeration Display Area	Type	Top & Bottom Display	Top & Bottom Display	Top & Bottom Display	Top & Bottom Display	Top & Bottom Display
Operating Temperature	°F	39°F	39°F	39°F	39°F	39°F
Compressor	Nr./Type	1 / Hermetic	1 / Hermetic	1 / Hermetic	1 / Hermetic	1 / Hermetic
BTU'S @ +10°F Evap Temperature	BTU'S	4300	4700	5200	5700	6000
Electric Supply	(V/Ph/Hz)	208-220/1/60	208-220/1/60	208-220/1/60	208-220/1/60	208-220/1/60
Power Consumption	(W/A)	1350/6.8	1550/7.5	1750/8.8	1850/9.1	2000/10.5
Defrost	Mode/Type	Electric	Electric	Electric	Electric	Electric
Climatic Class	°F/H.R.	75°F-55%RH	75°F-55%RH	75°F-55%RH	75°F-55%RH	75°F-55%RH
Refrigerant Gas	Type	R404A / R452A	R404A / R452A	R404A / R452A	R404A / R452A	R404A / R452A
Pipe Size (Inches)	Suction, Liquid	5/8", 5/16"	5/8", 5/16"	5/8", 5/16"	5/8", 5/16"	5/8", 5/16"
Net Weights	Lbs	360	400	450	530	580
Crated Weights	Lbs	410	450	500	580	630

*DIMENSIONS ARE WITH POLISHED S/S SKIN SIDES

*Oscartek reserves the right to change, modify, discontinue, or change any features, sizes, or capacity on any model without prior notice.

OSCARTEK®
 512 South Airport Blvd., South San Francisco, CA 94080
 Tel: 650.342.2400 | Fax: 650.342.7400
 www.oscartek.com

