



Optional wood laminate front panel

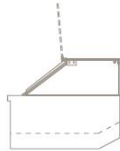


Visit our website for more finishing options and RAL colors

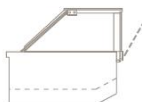
www.oscartek.com

OPTIONAL GLASS TOPS

R4UP – 47 1/4”H & 53 1/8”H: Lift up front top glass



S2 – 47 1/4”H & 53 1/8”H: Tilt down front glass hinged



GEM R4 Hot Showcase

CS-DRY MODELS: GEM R4 CS1150, GEM R4 CS1500, GEM R4 CS 2150

CBM-BAIN MARIE MODELS: GEM R4 CBM1150, GEM R4 CBM1500, GEM R4 CBM 2150

STANDARD FEATURES

- CS – dry hot plate
- CBM – bain mair hot wells
- Extra clear glass: front, top, sides glasses
- All tempered glass
- Heat lamp
- Stainless steel lower interior foam tub
- Galvanized chassis structure
- Cases ship standard unfinished front and polished stainless steel skin sides

OPTIONS

- Available height – 53 1/8”H
- Narrow depth – 25 7/16”D. Available CS-dry hot only
- R4UP glass top – Lift up front top glass
- S2 glass top – Tilt down front glass hinged
- Work top perimeter (brushed s/s, corian, granite)
- Epoxy RAL color interior and exterior over stainless steel
- RAL color/custom plastic wood laminate exterior front and sides
- Unfinished panels to accept millwork by others
- Casters

*Oscartek reserves the right to change, modify, discontinue, or change any features, sizes, or capacity on any model without prior notice.



Discover the Art of Display...

Project Name: _____

Item #: _____ Quantity: _____

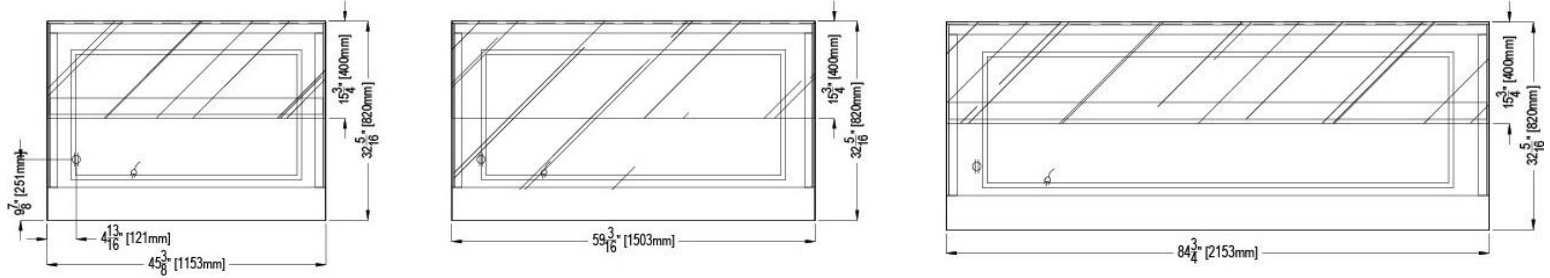
GEM R4 HOT

CS-DRY MODELS: GEM R4 CS1150, GEM R4 CS1500, GEM R4 CS 2150

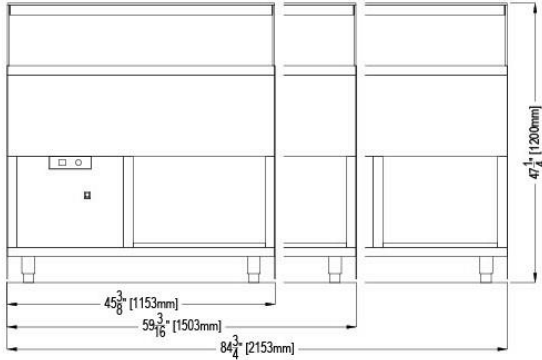
CBM-BAIN MARIE MODELS: GEM R4 CBM1150, GEM R4 CBM1500, GEM R4 CBM 2150

GEM R4 HOT: CS-DRY PLAN VIEWS

ELECTRICAL LEGEND	
	POWER



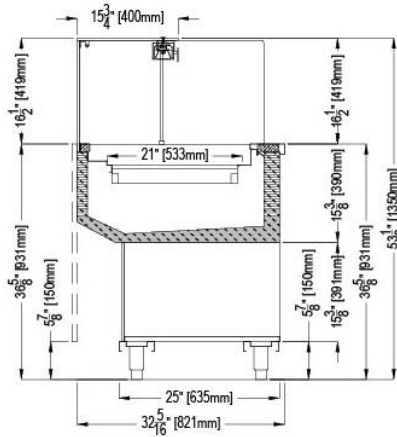
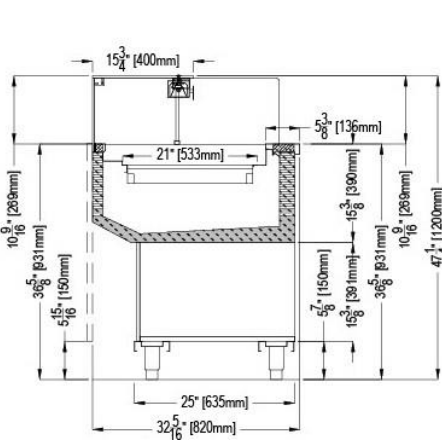
GEM R4 HOT: CS-DRY REAR ELEVATIONS (OPERATOR SIDE)



GEM R4 HOT: CS-DRY SECTION VIEWS

STANDARD: GEM R4 HOT
CS-DRY 47-1/4"H

OPTIONAL: GEM R4 HOT
CS-DRY AVAILABLE IN 53-1/8"H



*Oscartek reserves the right to change, modify, discontinue, or change any features, sizes, or capacity on any model without prior notice.

OSCARTEK®
512 South Airport Blvd., South San Francisco, CA 94080
Tel: 650.342.2400 | Fax: 650.342.7400
www.oscartek.com





Discover the Art of Display...

Project Name: _____

Item #: _____ Quantity: _____

GEM R4 HOT

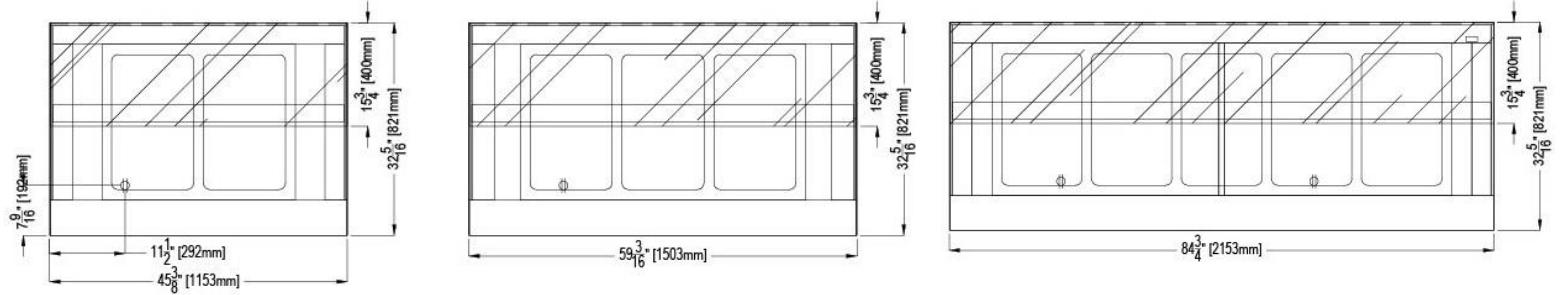
CS-DRY MODELS: GEM R4 CS1150, GEM R4 CS1500, GEM R4 CS 2150

CBM-BAIN MARIE MODELS: GEM R4 CBM1150, GEM R4 CBM1500, GEM R4 CBM 2150

GEM R4 HOT: CBM-BAIN MARIE

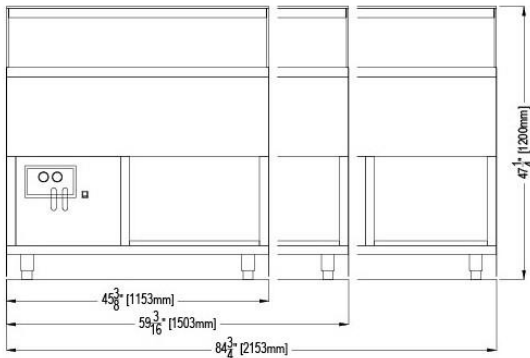
PLAN VIEWS

ELECTRICAL LEGEND	
	POWER



GEM R4 HOT: CBM-BAIN MARIE

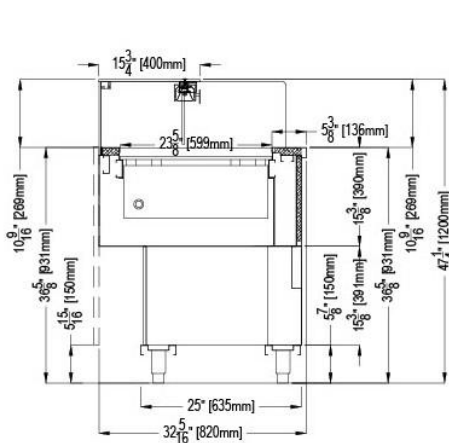
REAR ELEVATIONS (OPERATOR SIDE)



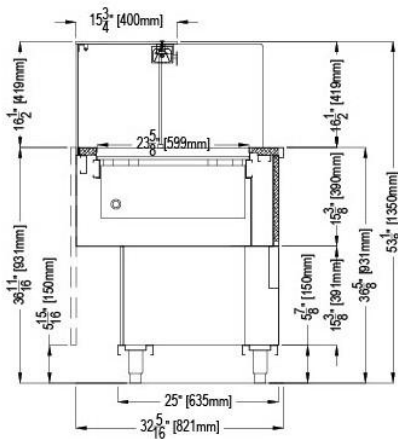
GEM R4 HOT: BM-BAIN MARIE

SECTION VIEWS

STANDARD: GEM R4 HOT
CBM BAIN MARIE 47-1/4" H



OPTIONAL: GEM R4 HOT
CBM-BAIN MARIE AVAILABLE IN 53-1/8" H



*Oscartek reserves the right to change, modify, discontinue, or change any features, sizes, or capacity on any model without prior notice.

OSCARTEK®
512 South Airport Blvd., South San Francisco, CA 94080
Tel: 650.342.2400 | Fax: 650.342.7400
www.oscartek.com





Project Name: _____
 Item #: _____ Quantity: _____

GEM R4 HOT

CS-DRY MODELS: GEM R4 CS1150, GEM R4 CS1500, GEM R4 CS 2150

CBM-BAIN MARIE MODELS: GEM R4 CBM1150, GEM R4 CBM1500, GEM R4 CBM 2150

GEM R4 HOT (CS-DRY)				
TECHNICAL FEATURES		MODELS		
		GEM R4 CS1150 (GEMCSR44512)	GEM R4 CS1500 (GEMCSR45912)	GEM R4 CS2150 (GEMCSR48512)
External Dimensions (L-D-H) Inches-MM	Inches MM	*45 3/8" - 32 5/16" - 47 1/4" *1153 - 821 - 1200	*59 3/16" - 32 5/16" - 47 1/4" *1503 - 821 - 1200	*84 3/4" - 32 5/16" - 47 1/4" *2153 - 821 - 1200
Crated Dimensions (L-D-H) Inches-MM	Inches MM	52" - 40 1/2" - 55 1/4" 1320 - 1030 - 1400	66" - 40 1/2" - 55 1/4" 1676 - 1030 - 1400	91" - 40 1/2" - 55 1/4" 2311 - 1030 - 1400
Operating Temperature	°F	177°F	177°F	177°F
Electric Supply**	(V/PH/HZ)	(2) 208-220/1/60	(2) 208-220/1/60	(2) 208-220/1/60
Power Amps Direct Connection**	HEAT LAMP (V/W/A) HOT PLATE (V/A)	208-220/580/3.2 120/6.7 - NEMA 5-15P	208-220/860/4.1 120/9.3 - NEMA 5-15P	208-220/1150/5.9 120/12 - NEMA 5-15P
Climatic Class	°F/H.R.	75°F-55%RH	75°F-55%RH	75°F-55%RH
Net Weights	Lbs	220	260	360
Crated Weights	Lbs	340	380	480

*DIMENSIONS ARE WITH POLISHED S/S SKIN SIDES

**REQUIRES 2 INDEPENDENT POWER SUPPLY

GEM R4 HOT (CBM- BAIN MARIE)				
TECHNICAL FEATURES		MODELS		
		GEM R4 CBM1150 (GEMCBMR44512)	GEM R4 CBM1500 (GEMCBMR45912)	GEM R4 CBM2150 (GEMCBMR48512)
External Dimensions (L-D-H) Inches-MM	Inches MM	*45 3/8" - 32 3/8" - 47 1/4" *1153 - 821 - 1200	*59 3/16" - 32 3/8" - 47 1/4" *1500 - 821 - 1200	*84 3/4" - 32 3/8" - 47 1/4" *2150 - 821 - 1200
Crated Dimensions (L-D-H) Inches-MM	Inches MM	52" - 40 1/2" - 55 1/4" 1320 - 1030 - 1400	66" - 40 1/2" - 55 1/4" 1676 - 1030 - 1400	91" - 40 1/2" - 55 1/4" 2311 - 1030 - 1400
Operating Temperature	°F	177°F	177°F	177°F
Electric Supply**	(V/PH/HZ)	(2) 208-220/1/60	(2) 208-220/1/60	(2) 208-220/1/60
Power Amps Direct Connection**	HEAT LAMP (V/W/A) BAIN MARIE (V/A)	208-220/1530/7.2 208-220/11.6	208-220/2030/9.5 208-220/17.4	208-220/3100/14.5 208-220/20.1
Climatic Class	°F/H.R.	75°F-55%RH	75°F-55%RH	75°F-55%RH
Net Weights	Lbs	220	260	360
Crated Weights	Lbs	340	380	480

*DIMENSIONS ARE WITH POLISHED S/S SKIN SIDES

**REQUIRES 2 INDEPENDENT POWER SUPPLY

NOTE: CBM-BAIN MARIE: DRAIN SIZE FOR INDIVIDUAL WELL 3/4"

*Oscartek reserves the right to change, modify, discontinue, or change any features, sizes, or capacity on any model without prior notice.

OSCARTEK®
 512 South Airport Blvd., South San Francisco, CA 94080
 Tel: 650.342.2400 | Fax: 650.342.7400
 www.oscartek.com

