



Discover the Art of Display...

Project Name: _____

Item #: _____ Quantity: _____



GEM R4 PRO Chocolate Showcase

MODELS: GEM R4 PRO C900, GEM R4 PRO C1000, GEM R4 PRO C1300, GEM R4 PRO C1500, GEM R4 PRO C1700, GEM R4 PRO C2000, GEM R4 PRO C2100, GEM R4 PRO C2600, GEM R4 PRO C3000, GEM R4 PRO CA90SQ, GEM R4 PRO CA90C

Gem R4 lineup with custom front panel by others



Visit our website for more finishing options and RAL colors
www.oscartek.com

OPTIONAL GLASS TOPS

R4UP – 47 1/4”H: Lift up front top glass without shelf
R4UP – 53 1/8”H: Lift up front top glass with non-refrigerated shelf



S2 – 47 1/4”H: Tilt down front glass hinged without shelf
S2 – 53 1/8”H: Tilt down front glass hinged with non-refrigerated shelf



STANDARD FEATURES

- Humidity control
- Extra clear glass: front, top, sides glasses with front air baffle
- All tempered glass
- Diffused LED lighting 3000°K
- Sliding acrylic back doors
- Stainless steel lower interior foam tub
- Galvanized chassis structure
- Cases ship standard unfinished front and polished stainless steel skin sides

OPTIONS

- Available height – 53 1/8”H with (1) non-refrigerated shelf
- R4UP glass top – Lift up front top glass
- S2 glass top – Tilt down front glass hinged
- Work top perimeter (brushed s/s, corian, granite)
- Stainless steel step shelf
- Cold storage
- Remote condensing unit
- Epoxy RAL color interior and exterior over stainless steel
- RAL color/custom plastic wood laminate exterior front and sides
- Unfinished panels to accept millwork by others
- Condensate heated pan
- Casters

*Oscartek reserves the right to change, modify, discontinue, or change any features, sizes, or capacity on any model without prior notice.

OSCARTEK®
512 South Airport Blvd., South San Francisco, CA 94080
Tel: 650.342.2400 | Fax: 650.342.7400
www.oscartek.com

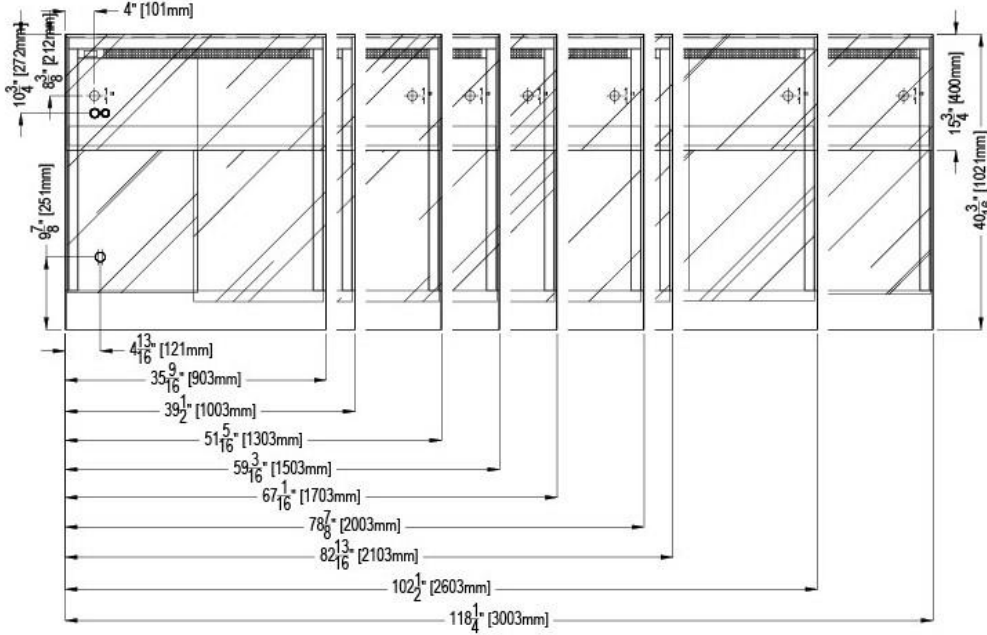


GEM R4 PRO CHOCOLATE

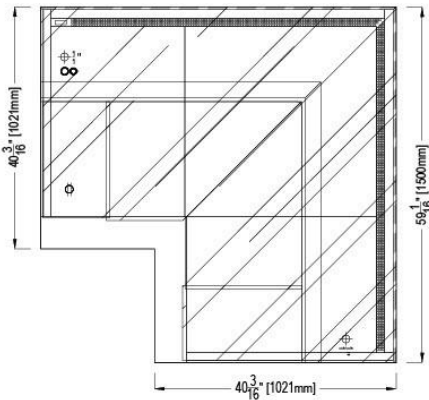
MODELS: GEM R4 PRO C900, GEM R4 PRO C1000, GEM R4 PRO C1300, GEM R4 PRO C1500, GEM R4 PRO C1700, GEM R4 PRO C2000, GEM R4 PRO C2100, GEM R4 PRO C2600, GEM R4 PRO C3000, GEM R4 PRO CA90SQ, GEM R4 PRO CA90C

STANDARD: GEM R4 PRO CHOCOLATE PLAN VIEWS

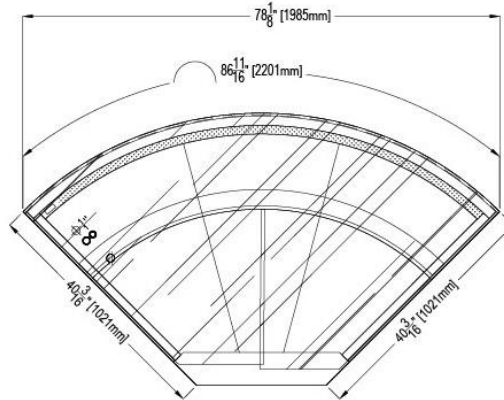
GEM R4 PRO CHOCOLATE LINEAR MODELS



GEM R4 PRO CA90SQ



GEM R4 PRO CA90C



ELECTRICAL LEGEND	
	REFRIGERATION LINES
	DRAIN
	POWER

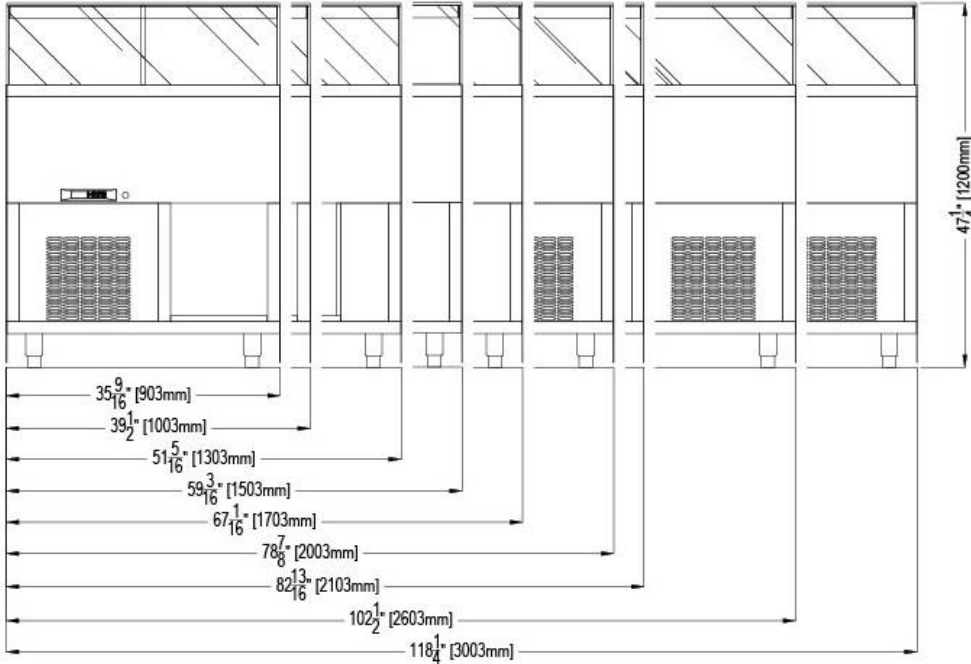
*Oscartek reserves the right to change, modify, discontinue, or change any features, sizes, or capacity on any model without prior notice.

GEM R4 PRO CHOCOLATE

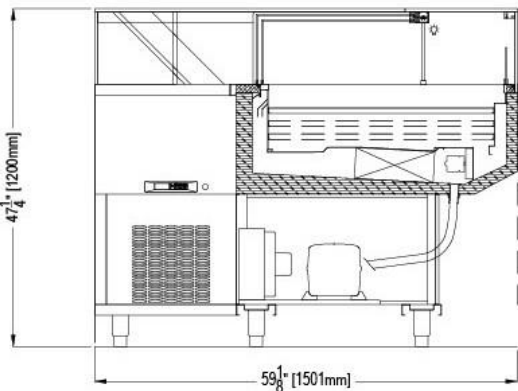
MODELS: GEM R4 PRO C900, GEM R4 PRO C1000, GEM R4 PRO C1300, GEM R4 PRO C1500, GEM R4 PRO C1700, GEM R4 PRO C2000, GEM R4 PRO C2100, GEM R4 PRO C2600, GEM R4 PRO C3000, GEM R4 PRO CA90SQ, GEM R4 PRO CA90C

STANDARD: GEM R4 PRO CHOCOLATE REAR ELEVATIONS (OPERATOR SIDE)

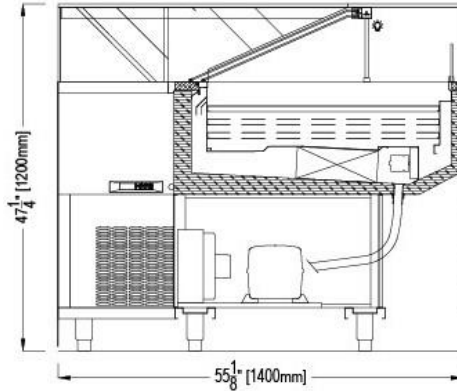
GEM R4 PRO CHOCOLATE LINEAR MODELS



GEM R4 PRO CA90SQ



GEM R4 PRO CA90C



*Oscartek reserves the right to change, modify, discontinue, or change any features, sizes, or capacity on any model without prior notice.

GEM R4 PRO CHOCOLATE

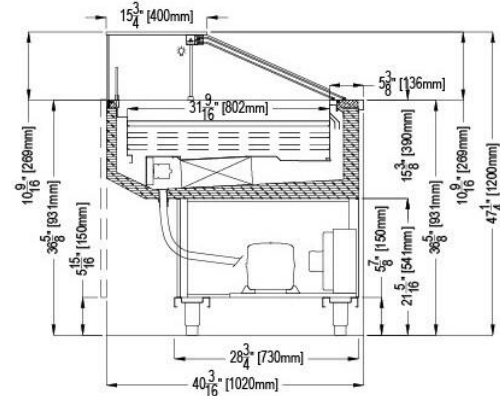
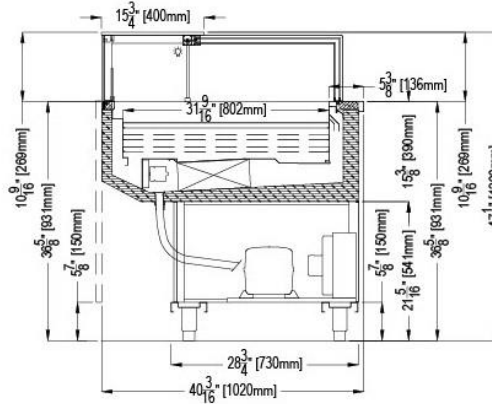
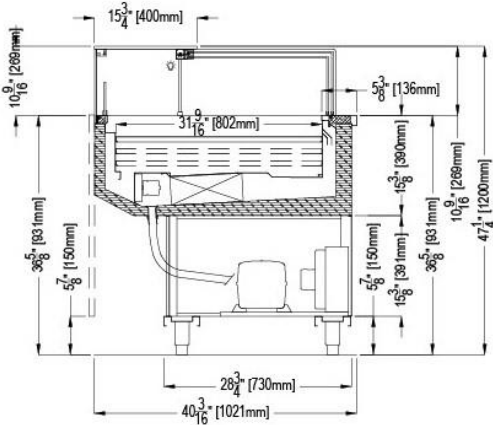
MODELS: GEM R4 PRO C900, GEM R4 PRO C1000, GEM R4 PRO C1300, GEM R4 PRO C1500, GEM R4 PRO C1700, GEM R4 PRO C2000, GEM R4 PRO C2100, GEM R4 PRO C2600, GEM R4 PRO C3000, GEM R4 PRO CA90SQ, GEM R4 PRO CA90C

STANDARD: GEM R4 PRO CHOCOLATE SECTION VIEWS

ALL GEM R4 PRO CHOCOLATE LINEAR MODELS + CA90SQ (EXCEPT FOR GEM R4 PRO C3000)

GEM R4 PRO C3000

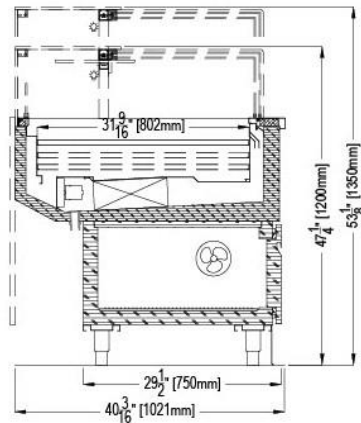
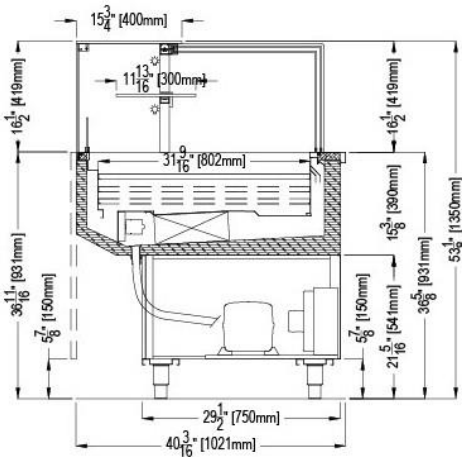
GEM R4 PRO CA90C



OPTIONAL: GEM R4 PRO CHOCOLATE SECTION VIEWS

GEM R4 PRO CHOCOLATE AVAILABLE IN 53-1/8\"H WITH NON-REFRIGERATED SHELF

GEM R4 PRO CHOCOLATE WITH COLD STORAGE AVAILABLE IN 47-1/4\"H & 53-1/8\"H



*Oscartek reserves the right to change, modify, discontinue, or change any features, sizes, or capacity on any model without prior notice.



Project Name: _____
 Item #: _____ Quantity: _____

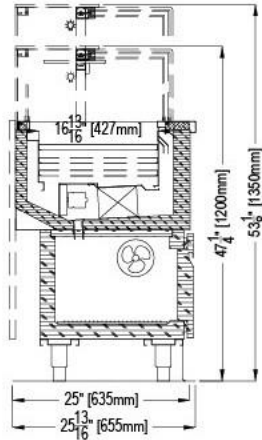
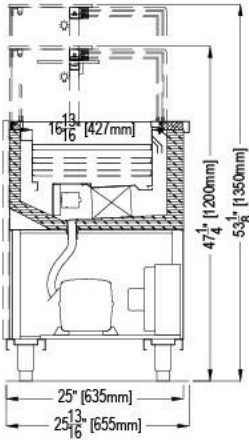
GEM R4 PRO CHOCOLATE

MODELS: GEM R4 PRO C900, GEM R4 PRO C1000, GEM R4 PRO C1300, GEM R4 PRO C1500, GEM R4 PRO C1700, GEM R4 PRO C2000, GEM R4 PRO C2100, GEM R4 PRO C2600, GEM R4 PRO C3000, GEM R4 PRO CA90SQ, GEM R4 PRO CA90C

OPTIONAL: GEM R4 PRO CHOCOLATE SECTION VIEWS

GEM R4 CHOCOLATE NARROW
 AVAILABLE IN 47-1/4"H & 53-1/8"H

GEM R4 CHOCOLATE NARROW WITH COLD
 STORAGE AVAILABLE IN 47-1/4"H & 53-1/8"H



GEM R4 PRO CHOCOLATE					
TECHNICAL FEATURES		MODELS			
		GEM R4 PRO C900	GEM R4 PRO C1000	GEM R4 PRO C1300	GEM R4 PRO C1500
External Dimensions (L-D-H) Inches-MM	Inches MM	*35 9/16" - 40 3/16" - 47 1/4" *903 - 1021 - 1200	*39 1/2" - 40 3/16" - 47 1/4" *1003 - 1021 - 1200	*51 5/16" - 40 3/16" - 47 1/4" *1303 - 1021 - 1200	*59 3/16" - 40 3/16" - 47 1/4" *1503 - 1021 - 1200
Crated Dimensions (L-D-H) Inches-MM	Inches MM	43 1/3" - 47" - 55 1/4" 1100 - 1193 - 1400	46" - 47" - 55 1/4" 1168 - 1193 - 1400	60" - 47" - 55 1/4" 1500 - 1193 - 1400	66" - 47" - 55 1/4" 1676 - 1193 - 1400
Refrigeration	Type	Ventilated	Ventilated	Ventilated	Ventilated
Refrigeration Display Area	Type	Deck	Deck	Deck	Deck
Operating Temperature	°F	55°F	55°F	55°F	55°F
Compressor	Nr./Type	Hermetic	Hermetic	Hermetic	Hermetic
Electric Supply	(V/Ph/Hz)	208-220/1/60	208-220/1/60	208-220/1/60	208-220/1/60
BTU'S @ +35°F Evap Temperature	BTU'S	2000	2200	2800	3200
Power Consumption	(W/A)	690/6.4	710/6.7	850/8.1	1050/9.5
Defrost	Mode/Type	Air	Air	Air	Air
Humidity Control	Type	45-65%	45-65%	45-65%	45-65%
Climatic Class	°F/H.R.	75°F-55%RH	75°F-55%RH	75°F-55%RH	75°F-55%RH
Refrigerant Gas	Type	R404A / R452A	R404A / R452A	R404A / R452A	R404A / R452A
Pipe Size (Inches)	Suction, Liquid	3/8", 1/4"	3/8", 1/4"	1/2", 1/4"	1/2", 1/4"
Net Weights	Lbs	230	240	280	300
Crated Weights	Lbs	390	400	440	470

*DIMENSIONS ARE WITH POLISHED S/S SKIN SIDES

*Oscartek reserves the right to change, modify, discontinue, or change any features, sizes, or capacity on any model without prior notice.

OSCARTEK®
 512 South Airport Blvd., South San Francisco, CA 94080
 Tel: 650.342.2400 | Fax: 650.342.7400
 www.oscartek.com





Discover the Art of Display...

Project Name: _____

Item #: _____ Quantity: _____

GEM R4 PRO CHOCOLATE

MODELS: GEM R4 PRO C900, GEM R4 PRO C1000, GEM R4 PRO C1300, GEM R4 PRO C1500, GEM R4 PRO C1700, GEM R4 PRO C2000, GEM R4 PRO C2100, GEM R4 PRO C2600, GEM R4 PRO C3000, GEM R4 PRO CA90SQ, GEM R4 PRO CA90C

GEM R4 PRO CHOCOLATE					
TECHNICAL FEATURES		MODELS			
		GEM R4 PRO C1700	GEM R4 PRO C2000	GEM R4 PRO C2100	GEM R4 PRO C2600
External Dimensions (L-D-H) Inches-MM	Inches MM	*67 1/6" - 40 3/16" - 47 1/4" *1703 - 1020 - 1200	*78 7/8" - 40 3/16" - 47 1/4" *2003 - 1020 - 1200	*82 13/16" - 40 3/16" - 47 1/4" *2103 - 1020 - 1200	*102 1/2" - 40 3/16" - 47 1/4" *2603 - 1020 - 1200
Crated Dimensions (L-D-H) Inches-MM	Inches MM	74" - 47" - 55 1/4" 1879 - 1193 - 1400	85" - 47" - 55 1/4" 2159 - 1193 - 1400	90 1/2" - 47" - 55 1/4" 2300 - 1193 - 1400	109" - 47" - 55 1/4" 2768 - 1193 - 1400
Refrigeration	Type	Ventilated	Ventilated	Ventilated	Ventilated
Refrigeration Display Area	Type	Deck	Deck	Deck	Deck
Operating Temperature	°F	55°F	55°F	55°F	55°F
Compressor	Nr./Type	Hermetic	Hermetic	Hermetic	Hermetic
Electric Supply	(V/Ph/Hz)	208-220/1/60	208-220/1/60	208-220/1/60	208-220/1/60
BTU'S @ +35°F Evap Temperature	BTU'S	3800	4500	4700	5500
Power Consumption	(W/A)	1200/11.4	1300/12.3	1350/12.8	1500/13.9
Defrost	Mode/Type	Air	Air	Air	Air
Humidity Control	Type	45-65%	45-65%	45-65%	45-65%
Climatic Class	°F/H.R.	75°F-55%RH	75°F-55%RH	75°F-55%RH	75°F-55%RH
Refrigerant Gas	Type	R404A / R452A	R404A / R452A	R404A / R452A	R404A / R452A
Pipe Size (Inches)	Suction, Liquid	5/8", 5/16"	5/8", 5/16"	5/8", 5/16"	5/8", 5/16"
Net Weights	Lbs	340	380	400	480
Crated Weights	Lbs	528	568	596	678

*DIMENSIONS ARE WITH POLISHED S/S SKIN SIDES

GEM R4 PRO CHOCOLATE				
TECHNICAL FEATURES		MODELS		
		GEM R4 PRO C3000	GEM R4 PRO CA90SQ	GEM R4 PRO CA90C
External Dimensions (L-D-H) Inches-MM	Inches MM	*118 1/4" - 40 3/16" - 47 1/4" *3003 - 1020 - 1200	**59 1/8" - 40 3/16" - 47 1/4" *1503 - 1020 - 1200	**78 1/8" - 40 3/16" - 47 1/4" *1984 - 1020 - 1200
Crated Dimensions (L-D-H) Inches-MM	Inches MM	125" - 47" - 55 1/4" 3175 - 1193 - 1400	66" - 47" - 55 1/4" 1676 - 1193 - 1400	88" - 47" - 55 1/4" 2235 - 1193 - 1400
Refrigeration	Type	Ventilated	Ventilated	Ventilated
Refrigeration Display Area	Type	Deck	Deck	Deck
Operating Temperature	°F	55°F	55°F	55°F
Compressor	Nr./Type	Hermetic	Hermetic	Hermetic
Electric Supply	(V/Ph/Hz)	208-220/1/60	208-220/1/60	208-220/1/60
BTU'S @ +35°F Evap Temperature	BTU'S	6000	4500	4800
Power Consumption	(W/A)	1650/15.8	1500/13.9	1500/13.9
Defrost	Mode/Type	Air	Air	Air
Humidity Control	Type	45-65%	45-65%	45-65%
Climatic Class	°F/H.R.	75°F-55%RH	75°F-55%RH	75°F-55%RH
Refrigerant Gas	Type	R404A / R452A	R404A / R452A	R404A / R452A
Pipe Size (Inches)	Suction, Liquid	5/8", 3/8"	5/8", 5/16"	5/8", 5/16"
Net Weights	Lbs	500	440	440
Crated Weights	Lbs	698	638	638

*DIMENSIONS ARE WITH POLISHED S/S SKIN SIDES

**SEE PLAN VIEW FOR ADDITIONAL EXTERIOR DIMENSIONS

*Oscartek reserves the right to change, modify, discontinue, or change any features, sizes, or capacity on any model without prior notice.

OSCARTEK®

512 South Airport Blvd., South San Francisco, CA 94080

Tel: 650.342.2400 | Fax: 650.342.7400

www.oscartek.com

