



Discover the Art of Display...

Project Name: _____

Item #: _____ Quantity: _____



Gem R4 lineup with optional RAL color front panel



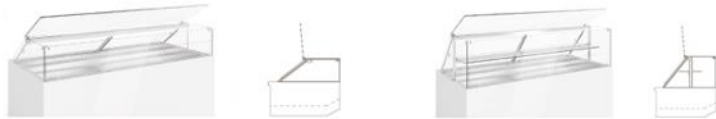
Optional stone front panel and corian perimeter top



Visit our website for more finishing options and RAL colors
www.oscartek.com

OPTIONAL GLASS TOPS

R4UP – 47 1/4”H: Lift up front top glass without shelf
R4UP – 53 1/8”H: Lift up front top glass with non-refrigerated shelf



S2 – 47 1/4”H: Tilt down front glass hinged without shelf
S2 – 53 1/8”H: Tilt down front glass hinged with non-refrigerated shelf



GEM R4 PRO Deli/Pastry Showcase

MODELS: GEM R4 PRO DP900, GEM R4 PRO DP1000, GEM R4 PRO DP1300, GEM R4 PRO DP1500, GEM R4 PRO DP1700, GEM R4 PRO DP2000, GEM R4 PRO DP2100, GEM R4 PRO DP2600, GEM R4 PRO DP3000, GEM R4 PRO DPA90SQ, GEM R4 PRO DPA90C

STANDARD FEATURES

- Extra clear glass: front and top glasses with front air baffle
- Heated glass sides
- All tempered glass
- Diffused LED lighting 3000°K
- Sliding acrylic back doors
- Stainless steel lower interior foam tub
- Galvanized chassis structure
- Cases ship standard unfinished front and polished stainless steel skin sides

OPTIONS

- Available height – 53 1/8”H with (1) non-refrigerated shelf
- R4UP glass top – Lift up front top glass
- S2 glass top – Tilt down front glass hinged
- Work top perimeter (brushed s/s, corian, granite)
- Stainless steel step shelf
- Cold storage
- Remote condensing unit
- Epoxy RAL color interior and exterior over stainless steel
- RAL color/custom plastic wood laminate exterior front and sides
- Unfinished panels to accept millwork by others
- Condensate heated pan
- Casters

*Oscartek reserves the right to change, modify, discontinue, or change any features, sizes, or capacity on any model without prior notice.

OSCARTEK®
512 South Airport Blvd., South San Francisco, CA 94080
Tel: 650.342.2400 | Fax: 650.342.7400
www.oscartek.com

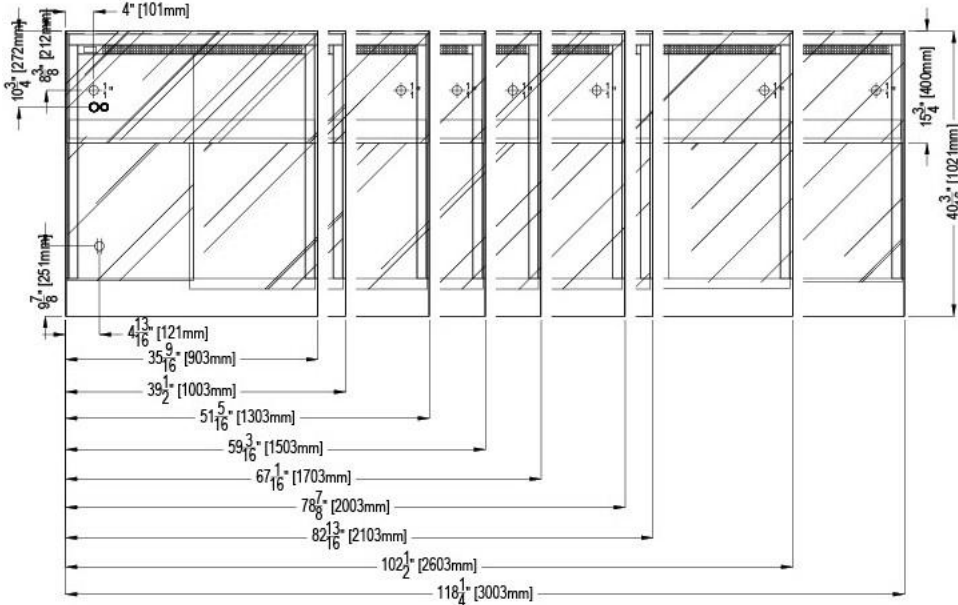


GEM R4 PRO DELI/PASTRY

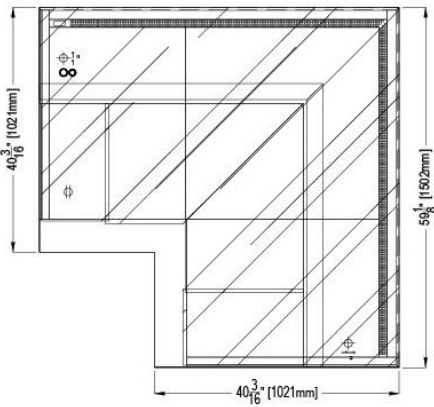
MODELS: GEM R4 PRO DP900, GEM R4 PRO DP1000, GEM R4 PRO DP1300, GEM R4 PRO DP1500, GEM R4 PRO DP1700, GEM R4 PRO DP2000, GEM R4 PRO DP2100, GEM R4 PRO DP2600, GEM R4 PRO DP3000, GEM R4 PRO DPA90SQ, GEM R4 PRO DPA90C

STANDARD: GEM R4 PRO DELI/PASTRY PLAN VIEWS

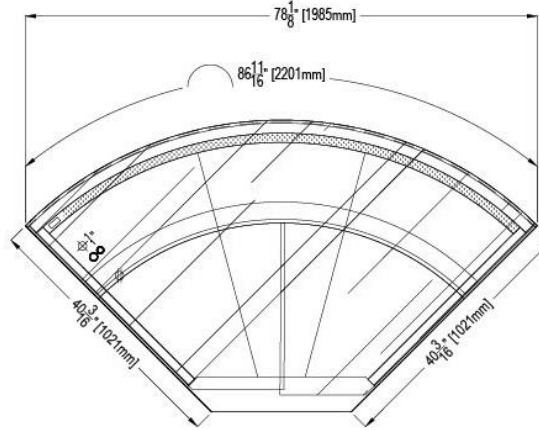
GEM R4 PRO DELI/PASTRY LINEAR MODELS


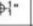



GEM R4 PRO DPA90SQ



GEM R4 PRO DPA90C



ELECTRICAL LEGEND	
	REFRIGERATION LINES
	DRAIN
	POWER

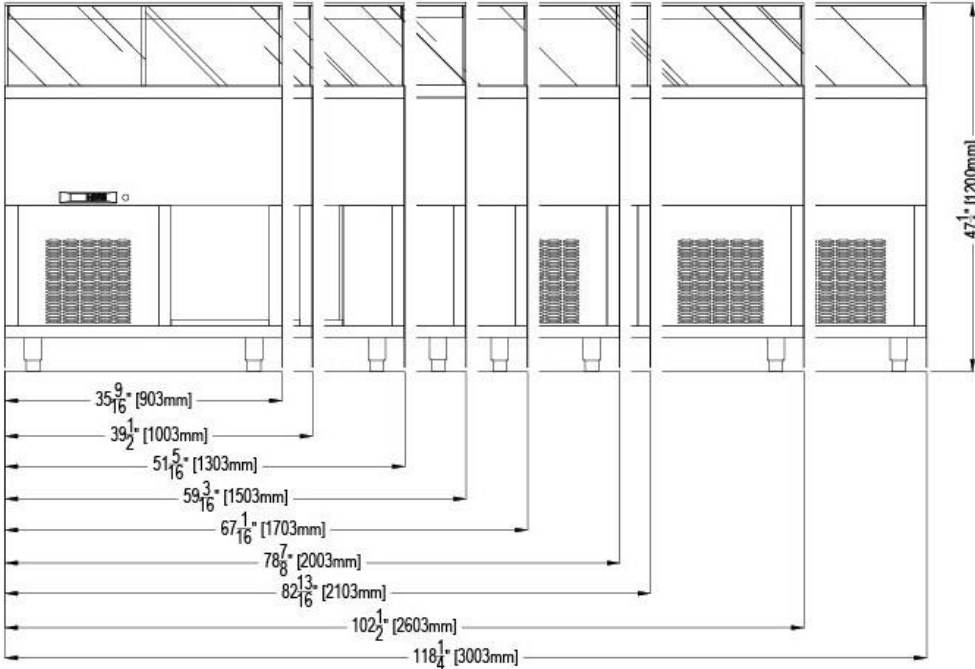
*Oscartek reserves the right to change, modify, discontinue, or change any features, sizes, or capacity on any model without prior notice.

GEM R4 PRO DELI/PASTRY

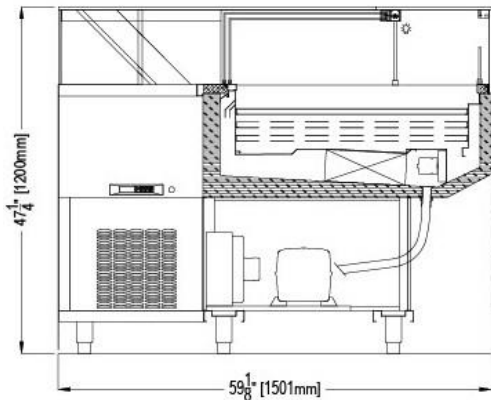
MODELS: GEM R4 PRO DP900, GEM R4 PRO DP1000, GEM R4 PRO DP1300, GEM R4 PRO DP1500, GEM R4 PRO DP1700, GEM R4 PRO DP2000, GEM R4 PRO DP2100, GEM R4 PRO DP2600, GEM R4 PRO DP3000, GEM R4 PRO DPA90SQ, GEM R4 PRO DPA90C

STANDARD: GEM R4 PRO DELI/PASTRY REAR ELEVATIONS (OPERATOR SIDE)

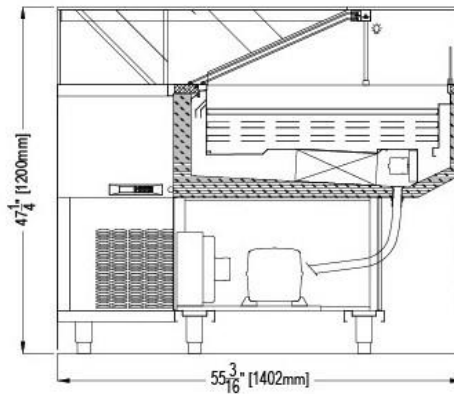
GEM R4 PRO DELI/PASTRY LINEAR MODELS



GEM R4 PRO DPA90SQ



GEM R4 PRO DPA90C



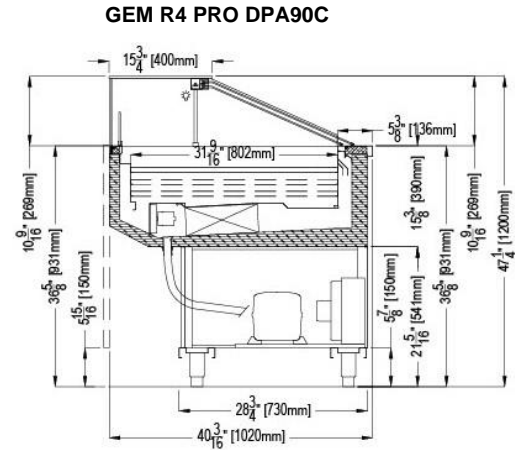
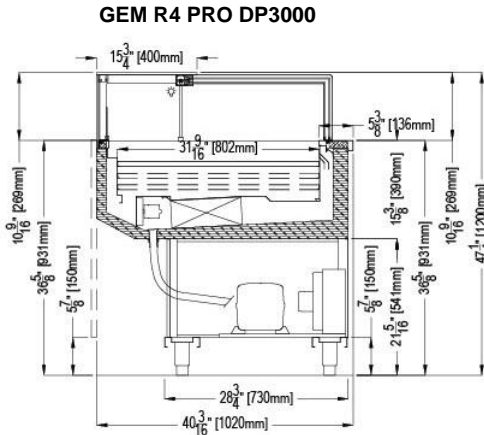
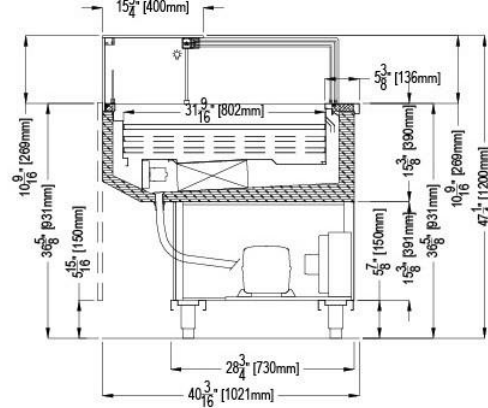
*Oscartek reserves the right to change, modify, discontinue, or change any features, sizes, or capacity on any model without prior notice.

GEM R4 PRO DELI/PASTRY

MODELS: GEM R4 PRO DP900, GEM R4 PRO DP1000, GEM R4 PRO DP1300, GEM R4 PRO DP1500, GEM R4 PRO DP1700, GEM R4 PRO DP2000, GEM R4 PRO DP2100, GEM R4 PRO DP2600, GEM R4 PRO DP3000, GEM R4 PRO DPA90SQ, GEM R4 PRO DPA90C

STANDARD: GEM R4 PRO DELI/PASTRY SECTION VIEWS

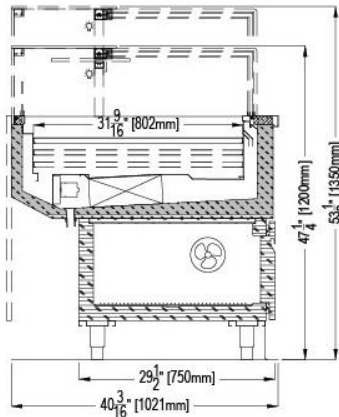
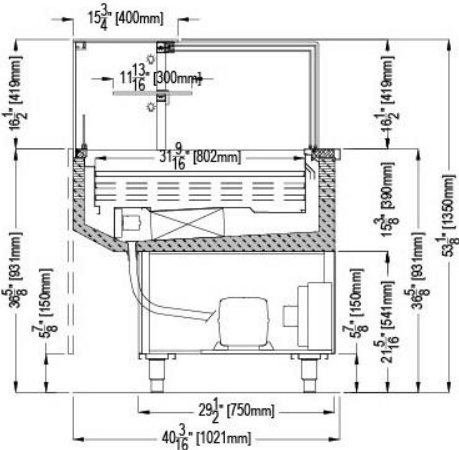
ALL GEM R4 PRO DELI/PASTRY LINEAR MODELS + DPA90SQ (EXCEPT FOR GEM R4 PRO DP3000)



OPTIONAL: GEM R4 PRO DELI/PASTRY SECTION VIEWS

GEM R4 PRO DELI/PASTRY AVAILABLE IN 53-1/8\"H WITH NON-REFRIGERATED SHELF

GEM R4 PRO DELI/PASTRY WITH COLD STORAGE AVAILABLE IN 47-1/4\"H & 53-1/8\"H



*Oscartek reserves the right to change, modify, discontinue, or change any features, sizes, or capacity on any model without prior notice.



Project Name: _____
 Item #: _____ Quantity: _____

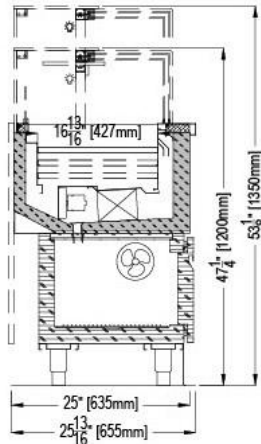
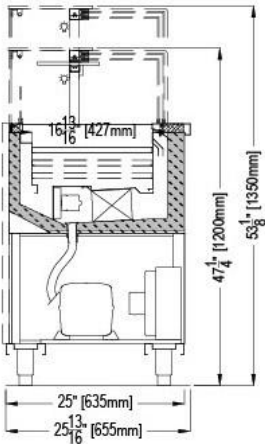
GEM R4 PRO DELI/PASTRY

MODELS: GEM R4 PRO DP900, GEM R4 PRO DP1000, GEM R4 PRO DP1300, GEM R4 PRO DP1500, GEM R4 PRO DP1700, GEM R4 PRO DP2000, GEM R4 PRO DP2100, GEM R4 PRO DP2600, GEM R4 PRO DP3000, GEM R4 PRO DPA90SQ, GEM R4 PRO DPA90C

OPTIONAL: GEM R4 PRO DELI/PASTRY SECTION VIEWS

GEM R4 PRO DELI/PASTRY NARROW
 AVAILABLE IN 47-1/4"H & 53-1/8"H

GEM R4 PRO DELI/PASTRY NARROW WITH COLD STORAGE
 AVAILABLE IN 47-1/4"H & 53-1/8"H



GEM R4 PRO DELI/PASTRY					
TECHNICAL FEATURES		MODELS			
		GEM R4 PRO DP900 (GEMPDPR43512)	GEM R4 PRO DP1000 (GEMPDPR43912)	GEM R4 PRO DP1300 (GEMPDPR45112)	GEM R4 PRO DP1500 (GEMPDPR45912)
External Dimensions (L-D-H)	Inches	*35 9/16" - 40 3/16" - 47 1/4"	*39 1/2" - 40 3/16" - 47 1/4"	*51 5/16" - 40 3/16" - 47 1/4"	*59 3/16" - 40 3/16" - 47 1/4"
	MM	*903 - 1021 - 1200	*1003 - 1021 - 1200	*1303 - 1021 - 1200	*1503 - 1021 - 1200
Crated Dimensions (L-D-H)	Inches	43 1/3" - 47" - 55 1/4"	46" - 47" - 55 1/4"	60" - 47" - 55 1/4"	66" - 47" - 55 1/4"
	MM	1100 - 1193 - 1400	1168 - 1193 - 1400	1500 - 1193 - 1400	1676 - 1193 - 1400
Refrigeration	Type	Ventilated	Ventilated	Ventilated	Ventilated
Refrigeration Display Area	Type	Deck	Deck	Deck	Deck
Operating Temperature	°F	40°F	40°F	40°F	40°F
Compressor	Nr./Type	Hermetic	Hermetic	Hermetic	Hermetic
Electric Supply	(V/Ph/Hz)	115/1/60	115/1/60	115/1/60	115/1/60
BTU'S @ +14°F Evap Temperature	BTU'S	2000	2200	2800	3200
Power Consumption	(W/A)	690/6.4	710/6.7	850/8.1	1050/9.5
Defrost	Mode/Type	Air	Air	Air	Air
Climatic Class	°F/H.R.	75°F-55%RH	75°F-55%RH	75°F-55%RH	75°F-55%RH
Refrigerant Gas	Type	R404A / R452A	R404A / R452A	R404A / R452A	R404A / R452A
Pipe Size (Inches)	Suction, Liquid	3/8", 1/4"	3/8", 1/4"	1/2", 1/4"	1/2", 1/4"
Net Weights	Lbs	230	240	280	300
Crated Weights	Lbs	390	400	440	470

*DIMENSIONS ARE WITH POLISHED S/S SKIN SIDES

*Oscartek reserves the right to change, modify, discontinue, or change any features, sizes, or capacity on any model without prior notice.

OSCARTEK®
 512 South Airport Blvd., South San Francisco, CA 94080
 Tel: 650.342.2400 | Fax: 650.342.7400
 www.oscartek.com





Discover the Art of Display...

Project Name: _____
Item #: _____ Quantity: _____

GEM R4 PRO DELI/PASTRY

MODELS: GEM R4 PRO DP900, GEM R4 PRO DP1000, GEM R4 PRO DP1300, GEM R4 PRO DP1500, GEM R4 PRO DP1700, GEM R4 PRO DP2000, GEM R4 PRO DP2100, GEM R4 PRO DP2600, GEM R4 PRO DP3000, GEM R4 PRO DPA90SQ, GEM R4 PRO DPA90C

GEM R4 PRO DELI/PASTRY					
TECHNICAL FEATURES		MODELS			
		GEM R4 PRO DP1700 (GEMPDPR46712)	GEM R4 PRO DP2000 (GEMPDPR47912)	GEM R4 PRO DP2100 (GEMPDPR48312)	GEM R4 PRO DP2600 (GEMPDPR410212)
External Dimensions (L-D-H) Inches-MM	Inches MM	*67 1/6" - 40 3/16" - 47 1/4" *1703 - 1020 - 1200	*78 7/8" - 40 3/16" - 47 1/4" *2003 - 1020 - 1200	*82 13/16" - 40 3/16" - 47 1/4" *2103 - 1020 - 1200	*102 1/2" - 40 3/16" - 47 1/4" *2603 - 1020 - 1200
Crated Dimensions (L-D-H) Inches-MM	Inches MM	74" - 47" - 55 1/4" 1879 - 1193 - 1400	85" - 47" - 55 1/4" 2159 - 1193 - 1400	90 1/2" - 47" - 55 1/4" 2300 - 1193 - 1400	109" - 47" - 55 1/4" 2768 - 1193 - 1400
Refrigeration	Type	Ventilated	Ventilated	Ventilated	Ventilated
Refrigeration Display Area	Type	Deck	Deck	Deck	Deck
Operating Temperature	°F	40°F	40°F	40°F	40°F
Compressor	Nr./Type	Hermetic	Hermetic	Hermetic	Hermetic
Electric Supply	(V/Ph/Hz)	115/1/60	115/1/60	115/1/60	115/1/60
BTU'S @ +14°F Evap Temperature	BTU'S	3800	4500	4700	5500
Power Consumption	(W/A)	1200/11.4	1300/12.3	1350/12.8	1500/13.9
Defrost	Mode/Type	Air	Air	Air	Air
Climatic Class	°F/H.R.	75°F-55%RH	75°F-55%RH	75°F-55%RH	75°F-55%RH
Refrigerant Gas	Type	R404A / R452A	R404A / R452A	R404A / R452A	R404A / R452A
Pipe Size (Inches)	Suction, Liquid	5/8", 5/16"	5/8", 5/16"	5/8", 5/16"	5/8", 5/16"
Net Weights	Lbs	340	380	400	480
Crated Weights	Lbs	528	568	596	678

*DIMENSIONS ARE WITH POLISHED S/S SKIN SIDES

GEM R4 PRO DELI/PASTRY					
TECHNICAL FEATURES		MODELS			
		GEM R4 PRO DP3000 (GEMPDPR411812)	GEM R4 PRO DPA90SQ (GEMPDPR4AP9012)	GEM R4 PRO DPA90C (GEMPDPR4CV9012)	
External Dimensions (L-D-H) Inches-MM	Inches MM	*118 1/4" - 40 3/16" - 47 1/4" *3003 - 1020 - 1200	**59 1/8" - 40 3/16" - 47 1/4" *1503 - 1020 - 1200	**78 1/8" - 40 3/16" - 47 1/4" *1984 - 1020 - 1200	
Crated Dimensions (L-D-H) Inches-MM	Inches MM	125" - 47" - 55 1/4" 3175 - 1193 - 1400	66" - 47" - 55 1/4" 1676 - 1193 - 1400	88" - 47" - 55 1/4" 2235 - 1193 - 1400	
Refrigeration	Type	Ventilated	Ventilated	Ventilated	
Refrigeration Display Area	Type	Deck	Deck	Deck	
Operating Temperature	°F	40°F	40°F	40°F	
Compressor	Nr./Type	Hermetic	Hermetic	Hermetic	
Electric Supply	(V/Ph/Hz)	115/1/60	115/1/60	115/1/60	
BTU'S @ +14°F Evap Temperature	BTU'S	6000	4500	4800	
Power Consumption	(W/A)	1650/15.8	1500/13.9	1500/13.9	
Defrost	Mode/Type	Air	Air	Air	
Climatic Class	°F/H.R.	75°F-55%RH	75°F-55%RH	75°F-55%RH	
Refrigerant Gas	Type	R404A / R452A	R404A / R452A	R404A / R452A	
Pipe Size (Inches)	Suction, Liquid	5/8", 3/8"	5/8", 5/16"	5/8", 5/16"	
Net Weights	Lbs	500	440	440	
Crated Weights	Lbs	698	638	638	

*DIMENSIONS ARE WITH POLISHED S/S SKIN SIDES

**SEE PLAN VIEW FOR ADDITIONAL EXTERIOR DIMENSIONS

*Oscartek reserves the right to change, modify, discontinue, or change any features, sizes, or capacity on any model without prior notice.

OSCARTEK®
512 South Airport Blvd., South San Francisco, CA 94080
Tel: 650.342.2400 | Fax: 650.342.7400
www.oscartek.com

