



Project Name: _____
 Item #: _____ Quantity: _____



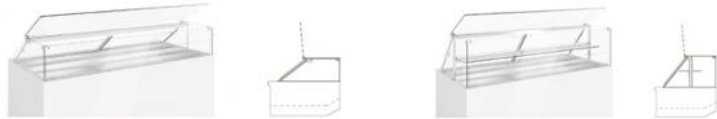
Custom glass top height with front custom front panel by others



Visit our website for more finishing options and RAL colors
www.oscartek.com

OPTIONAL GLASS TOPS

R4UP – 47 1/4”H: Lift up front top glass without shelf
R4UP – 53 1/8”H: Lift up front top glass with non-refrigerated shelf



S2 – 47 1/4”H: Tilt down front glass hinged without shelf
S2 – 53 1/8”H: Tilt down front glass hinged with non-refrigerated shelf



GEM R4 PRO Fish Showcase

MODELS: GEM R4 PRO F900, GEM R4 PRO F1000, GEM R4 PRO F1300, GEM R4 PRO F1500, GEM R4 PRO F1700, GEM R4 PRO F2000, GEM R4 PRO F2100, GEM R4 PRO F2600, GEM R4 PRO F3000, GEM R4 PRO FA90SQ

STANDARD FEATURES

- Extra clear glass: front, top, sides glasses
- All tempered glass
- Diffused LED lighting 3000°K
- Sliding acrylic back doors
- Stainless steel cold wall static cooling insulated bin to retain ice
- Insulated stainless steel interior AISI 316 anti-corrosion
- Floor sink required
- Cases ship standard unfinished front and polished stainless steel skin sides

OPTIONS

- Available height – 53 1/8”H with (1) non-refrigerated shelf
- R4UP glass top – Lift up front top glass
- S2 glass top – Tilt down front glass hinged
- Work top perimeter (brushed s/s, corian, Work top perimeter (brushed s/s, corian, granite)
- Remote condensing unit
- Epoxy RAL color interior and exterior over stainless steel
- RAL color/custom plastic wood laminate exterior front and sides
- Unfinished panels to accept millwork by others
- Casters

*Oscartek reserves the right to change, modify, discontinue, or change any features, sizes, or capacity on any model without prior notice.

OSCARTEK®
 512 South Airport Blvd., South San Francisco, CA 94080
 Tel: 650.342.2400 | Fax: 650.342.7400
www.oscartek.com



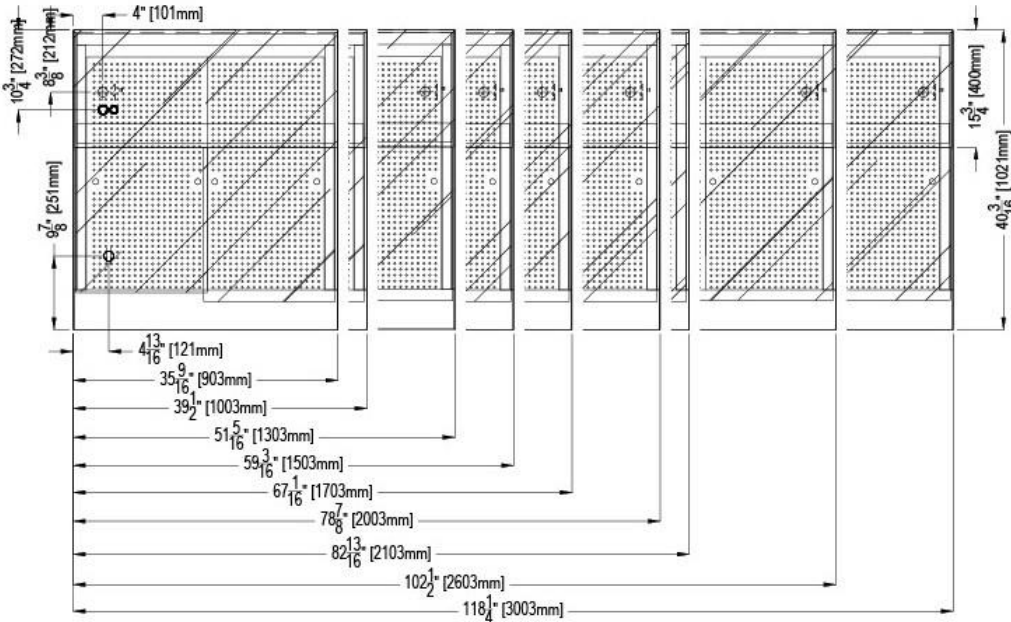
GEM R4 PRO FISH

MODELS: GEM R4 PRO F900, GEM R4 PRO F1000, GEM R4 PRO F1300, GEM R4 PRO F1500, GEM R4 PRO F1700, GEM R4 PRO F2000, GEM R4 PRO F2100, GEM R4 PRO F2600, GEM R4 PRO F3000, GEM R4 PRO FA90SQ

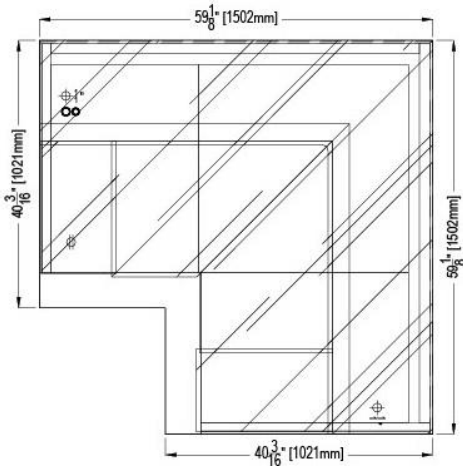
STANDARD: GEM R4 PRO FISH

PLAN VIEWS

GEM R4 PRO FISH LINEAR MODELS



GEM R4 PRO FA90SQ



ELECTRICAL LEGEND

∞	REFRIGERATION LINES
⊕ 1"	DRAIN
⊕	POWER

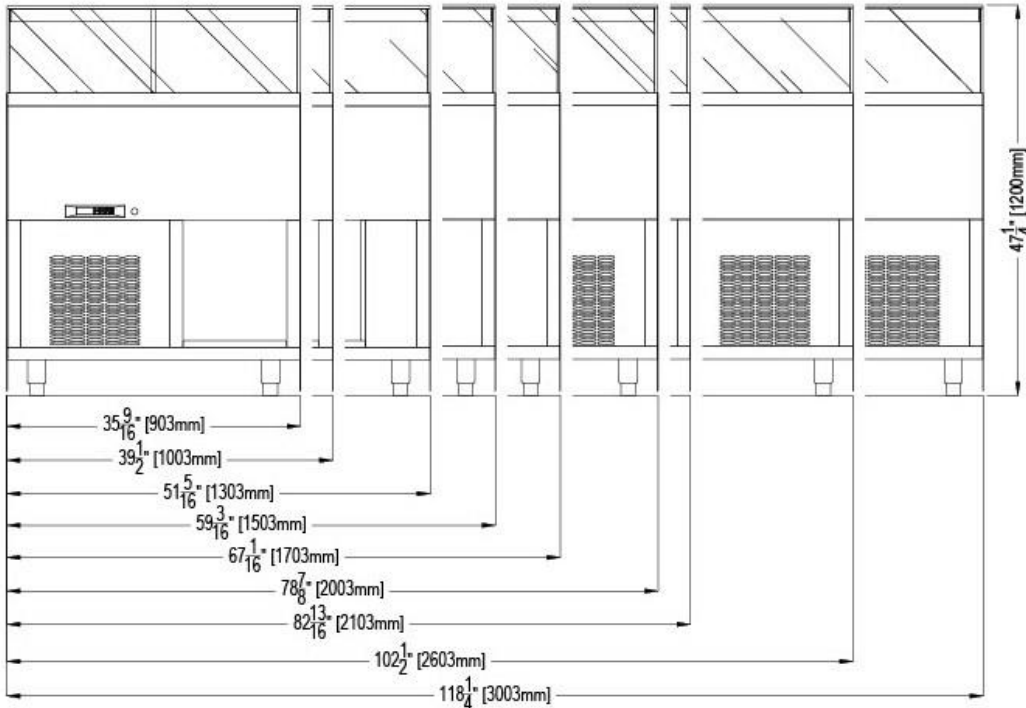
*Oscartek reserves the right to change, modify, discontinue, or change any features, sizes, or capacity on any model without prior notice.

GEM R4 PRO FISH

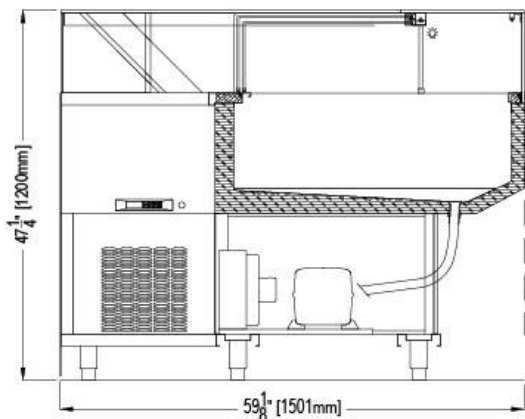
MODELS: GEM R4 PRO F900, GEM R4 PRO F1000, GEM R4 PRO F1300, GEM R4 PRO F1500, GEM R4 PRO F1700, GEM R4 PRO F2000, GEM R4 PRO F2100, GEM R4 PRO F2600, GEM R4 PRO F3000, GEM R4 PRO FA90SQ

STANDARD: GEM R4 PRO FISH REAR ELEVATIONS (OPERATOR SIDE)

GEM R4 PRO FISH LINEAR MODELS



GEM R4 PRO FA90SQ



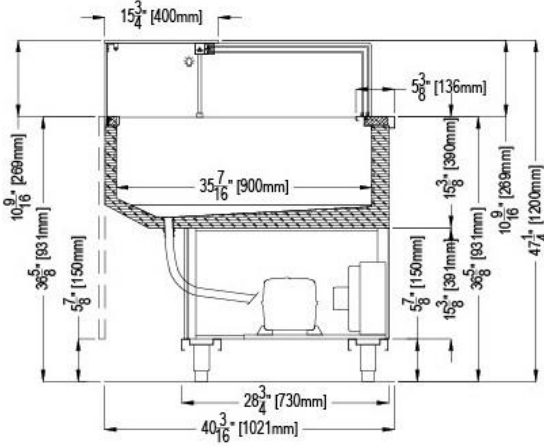
*Oscartek reserves the right to change, modify, discontinue, or change any features, sizes, or capacity on any model without prior notice.

GEM R4 PRO FISH

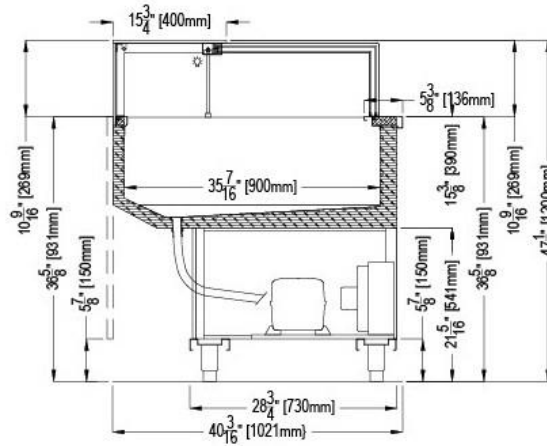
MODELS: GEM R4 PRO F900, GEM R4 PRO F1000, GEM R4 PRO F1300, GEM R4 PRO F1500, GEM R4 PRO F1700, GEM R4 PRO F2000, GEM R4 PRO F2100, GEM R4 PRO F2600, GEM R4 PRO F3000, GEM R4 PRO FA90SQ

STANDARD: GEM R4 PRO FISH SECTION VIEWS

ALL GEM R4 PRO FISH LINEAR MODELS
+ FA90SQ (EXCEPT FOR GEM R4 PRO F3000)

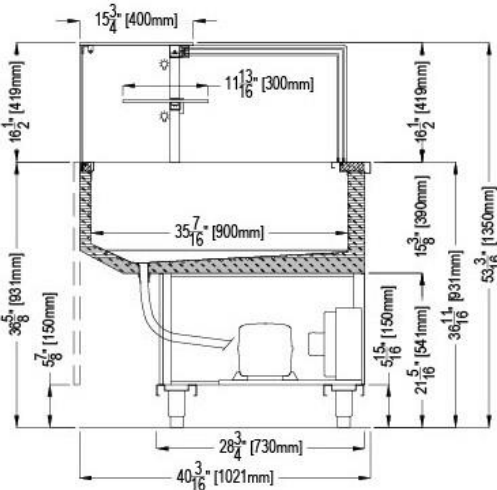


GEM R4 PRO F3000

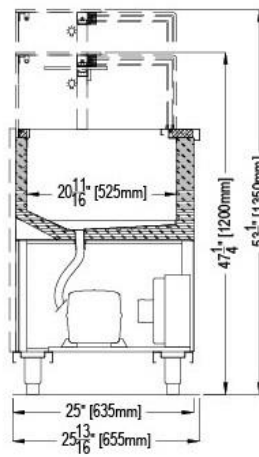


OPTIONAL: GEM R4 PRO FISH SECTION VIEWS

GEM R4 PRO FISH AVAILABLE IN 53-18" H
WITH NON-REFRIGERATED SHELF



GEM R4 FISH NARROW
AVAILABLE IN 47-1/4" H & 53-1/8" H



*Oscartek reserves the right to change, modify, discontinue, or change any features, sizes, or capacity on any model without prior notice.



Project Name: _____
 Item #: _____ Quantity: _____

GEM R4 PRO FISH

MODELS: GEM R4 PRO F900, GEM R4 PRO F1000, GEM R4 PRO F1300, GEM R4 PRO F1500, GEM R4 PRO F1700, GEM R4 PRO F2000, GEM R4 PRO F2100, GEM R4 PRO F2600, GEM R4 PRO F3000, GEM R4 PRO FA90SQ

GEM R4 PRO FISH						
TECHNICAL FEATURES		MODELS				
		GEM R4 PRO F900	GEM R4 PRO F1000 (GEMPF43912)	GEM R4 PRO F1300	GEM R4 PRO F1500 (GEMPF45912)	GEM R4 PRO F1700
External Dimensions (L-D-H) Inches-MM	Inches MM	*35 9/16" - 40 3/16" - 47 1/4" *903 - 1021 - 1200	*39 1/2" - 40 3/16" - 47 1/4" *1003 - 1021 - 1200	*51 5/16" - 40 3/16" - 47 1/4" *1303 - 1021 - 1200	*59 3/16" - 40 3/16" - 47 1/4" *1503 - 1021 - 1200	*67 1/6" - 40 3/16" - 47 1/4" *1703 - 1020 - 1200
Crated Dimensions (L-D-H) Inches-MM	Inches MM	43 1/3" - 47" - 55 1/4" 1100 - 1193 - 1400	46" - 47" - 55 1/4" 1168 - 1193 - 1400	60" - 47" - 55 1/4" 1500 - 1193 - 1400	66" - 47" - 55 1/4" 1676 - 1193 - 1400	74" - 47" - 55 1/4" 1879 - 1193 - 1400
Operating Temperature	°F	36°F	36°F	36°F	36°F	36°F
Electric Supply	(V/Ph/Hz)	115/1/60	115/1/60	115/1/60	115/1/60	115/1/60
BTU'S @ +3°F Evap Temperature	BTU'S	1500	1900	2400	2500	3100
Power Consumption	(W/A)	550/5.0	600/5.7	650/6.0	900/8.5	1300/10.0
Climatic Class	°F/H.R.	75°F-55%RH	75°F-55%RH	75°F-55%RH	75°F-55%RH	75°F-55%RH
Refrigerant Gas	Type	R404A / R452A	R404A / R452A	R404A / R452A	R404A / R452A	R404A / R452A
Pipe Size (Inches)	Suction, Liquid	3/8", 1/4"	3/8", 1/4"	1/2", 1/4"	1/2", 1/4"	1/2", 1/4"
Net Weights	Lbs	230	250	280	300	340
Crated Weights	Lbs	390	410	440	470	528

*DIMENSIONS ARE WITH POLISHED S/S SKIN SIDES

GEM R4 PRO FISH						
TECHNICAL FEATURES		MODELS				
		GEM R4 PRO F2000 (GEMPF47912)	GEM R4 PRO F2100	GEM R4 PRO F2600	GEM R4 PRO F3000	GEM R4 PRO FA90SQ
External Dimensions (L-D-H) Inches-MM	Inches MM	*78 7/8" - 40 3/16" - 47 1/4" *2003 - 1020 - 1200	*82 13/16" - 40 3/16" - 47 1/4" *2103 - 1020 - 1200	*102 1/2" - 40 3/16" - 47 1/4" *2603 - 1020 - 1200	*118 1/4" - 40 3/16" - 47 1/4" *3003 - 1020 - 1200	**59 1/8" - 40 3/16" - 47 1/4" *1503 - 1020 - 1200
Crated Dimensions (L-D-H) Inches-MM	Inches MM	85" - 47" - 55 1/4" 2159 - 1193 - 1400	90 1/2" - 47" - 55 1/4" 2300 - 1193 - 1400	109" - 47" - 55 1/4" 2768 - 1193 - 1400	125" - 47" - 55 1/4" 3175 - 1193 - 1400	66" - 47" - 55 1/4" 1676 - 1193 - 1400
Operating Temperature	°F	36°F	36°F	36°F	36°F	36°F
Electric Supply	(V/Ph/Hz)	115/1/60	115/1/60	115/1/60	115/1/60	115/1/60
BTU'S @ +3°F Evap Temperature	BTU'S	3200	3600	4200	4500	4500
Power Consumption	(W/A)	1200/11.4	1300/12.0	1500/12.2	1650/13.0	1650/13.0
Climatic Class	°F/H.R.	75°F-55%RH	75°F-55%RH	75°F-55%RH	75°F-55%RH	75°F-55%RH
Refrigerant Gas	Type	R404A / R452A	R404A / R452A	R404A / R452A	R404A / R452A	R404A / R452A
Pipe Size (Inches)	Suction, Liquid	5/8", 5/16"	5/8", 5/16"	5/8", 5/16"	5/8", 5/16"	5/8", 5/16"
Net Weights	Lbs	380	400	480	500	440
Crated Weights	Lbs	568	598	678	698	638

*DIMENSIONS ARE WITH POLISHED S/S SKIN SIDES

**SEE PLAN VIEW FOR ADDITIONAL EXTERIOR DIMENSIONS

*Oscartek reserves the right to change, modify, discontinue, or change any features, sizes, or capacity on any model without prior notice.

OSCARTEK®
 512 South Airport Blvd., South San Francisco, CA 94080
 Tel: 650.342.2400 | Fax: 650.342.7400
 www.oscartek.com

