



Project Name: _____
Item #: _____ Quantity: _____



Optional HPL white front and side panels



Visit our website for more finishing options and RAL colors
www.oscartek.com

OPTIONAL GLASS TOPS

R4UP – 47 1/4”H & 53 1/8”H: Lift up front top glass



S2 – 47 1/4”H & 53 1/8”H: Tilt down front glass hinged



GEM R4 PRO

Gelato/Ice Cream Showcase

MODELS: GEM R4 PRO G1000, GEM R4 PRO G1150, GEM R4 PRO G1650, GEM R4 PRO G2150

STANDARD FEATURES

- Extra clear glass: top glass only
- Heated glass front and sides glasses
- All tempered glass
- Diffused LED lighting 3000°K
- Sliding acrylic back doors
- Stainless steel lower interior foam tub
- Galvanized chassis structure
- Cases ship standard unfinished front and polished stainless steel skin sides

OPTIONS

- Available height – 53 1/8”H
- R4UP glass top – Lift up front top glass
- S2 glass top – Tilt down front glass hinged
- Work top perimeter (brushed s/s, corian, granite)
- Switch device from low temp (-18°C) to positive temp (+4°C)
- Stainless steel pans (4 liter, 5 liter, and 8 liter)
- Popsicle display tray (stainless steel or plastic)
- Dipper well
- Cone holder
- Remote condensing unit
- Epoxy RAL color interior and exterior over stainless steel
- RAL color/custom plastic wood laminate exterior front and sides
- Unfinished panels to accept millwork by others
- Condensate heated pan
- Casters

*Oscartek reserves the right to change, modify, discontinue, or change any features, sizes, or capacity on any model without prior notice.

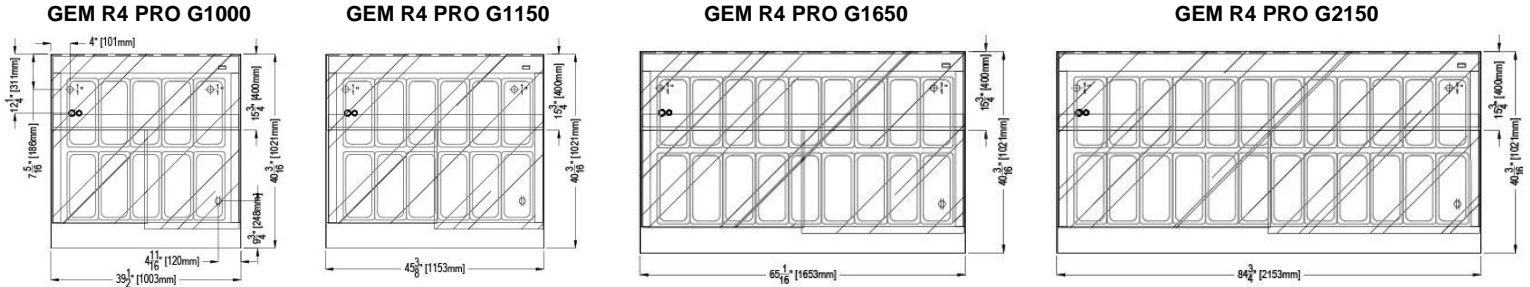


GEM R4 PRO GELATO/ICE CREAM

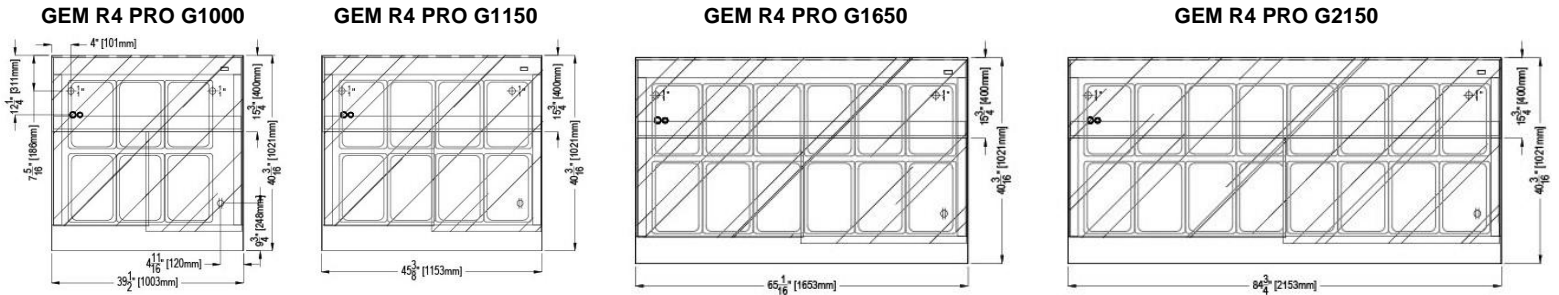
MODELS: GEM R4 PRO G1000, GEM R4 PRO G1150, GEM R4 PRO G1650, GEM R4 PRO G2150

STANDARD: GEM R4 PRO GELATO/ICE CREAM

PLAN VIEWS – 5 LITER PANS

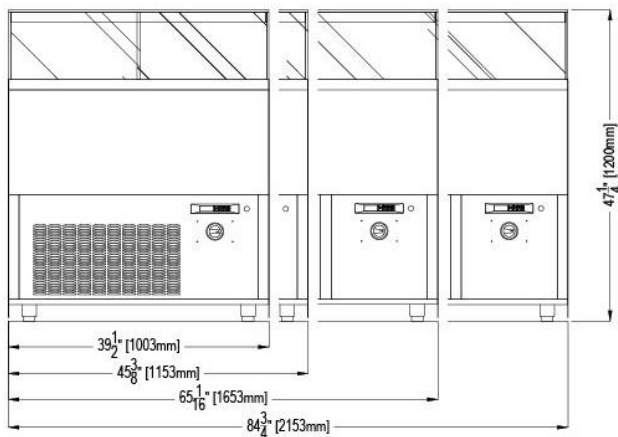


PLAN VIEWS – 8 LITER PANS



ELECTRICAL LEGEND	
∞	REFRIGERATION LINES
Φ-1"	DRAIN
Φ	POWER

GEM R4 PRO GELATO/ICE CREAM REAR ELEVATIONS (OPERATOR SIDE)



*Oscartek reserves the right to change, modify, discontinue, or change any features, sizes, or capacity on any model without prior notice.



Discover the Art of Display...

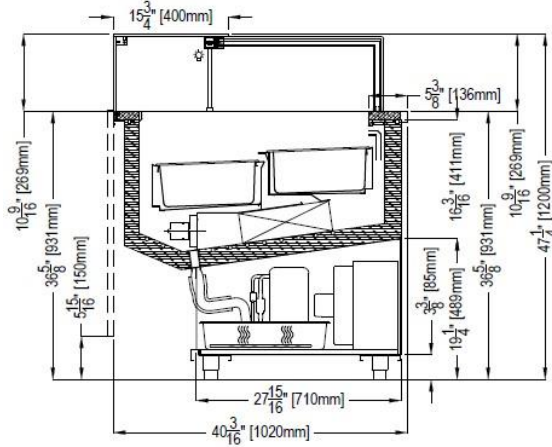
Project Name: _____
 Item #: _____ Quantity: _____

GEM R4 PRO GELATO/ICE CREAM

MODELS: GEM R4 PRO G1000, GEM R4 PRO G1150, GEM R4 PRO G1650, GEM R4 PRO G2150

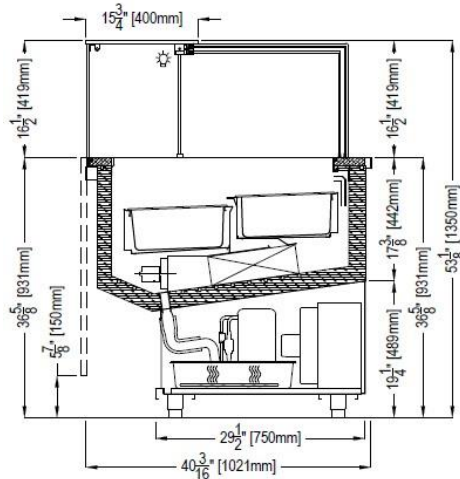
GEM R4 PRO GELATO/ICE CREAM SECTION VIEWS

STANDARD: GEM R4 PRO 47-1/4"H
 5 LITER & 8 LITER PANS

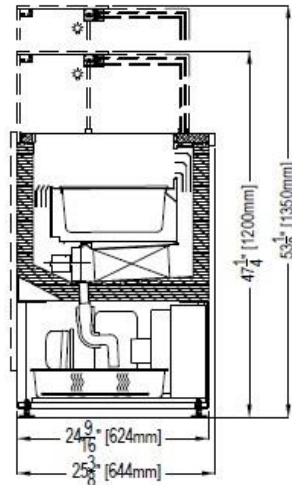


OPTIONAL: GEM R4 PRO GELATO/ICE CREAM SECTION VIEWS

GEM R4 PRO 53-1/8"H



GEM R4 NARROW
 AVAILABLE IN 47-1/4"H & 53-1/8"H



*Oscartek reserves the right to change, modify, discontinue, or change any features, sizes, or capacity on any model without prior notice.

OSCARTEK®
 512 South Airport Blvd., South San Francisco, CA 94080
 Tel: 650.342.2400 | Fax: 650.342.7400
 www.oscartek.com





Project Name: _____
 Item #: _____ Quantity: _____

GEM R4 PRO GELATO/ICE CREAM

MODELS: GEM R4 PRO G1000, GEM R4 PRO G1150, GEM R4 PRO G1650, GEM R4 PRO G2150

GEM R4 PRO GELATO/ICE CREAM					
TECHNICAL FEATURES		MODELS			
		GEM R4 PRO G1000	GEM R4 PRO G1150 (GEMPGELG145)	GEM R4 PRO G1650 (GEMPGELG145)	GEM R4 PRO G2150 (GEMPGELG185)
External Dimensions (L-D-H) Inches-MM	Inches MM	*39 1/2" - 40 3/16" - 47 1/4" *1003 - 1021 - 1200	*45 3/8" - 40 3/16" - 47 1/4" *1153 - 1021 - 1200	*65 1/16" - 40 3/16" - 47 1/4" *1653 - 1021 - 1200	*84 3/4" - 40 3/16" - 47 1/4" *2153 - 1021 - 1200
Crated Dimensions (L-D-H) Inches-MM	Inches MM	46" - 47" - 55 1/4" 1168 - 1193 - 1400	52" - 47" - 55 1/4" 1320 - 1193 - 1400	72" - 47" - 55 1/4" 1828 - 1193 - 1400	91" - 47" - 55 1/4" 2311 - 1193 - 1400
5 Liter Pan Capacity** 14 3/16" x 6 1/2" x 4 3/4" (360mm x 165mm x 120mm)	Pan Configuration				
8 Liter Pan Capacity** 14 3/16" x 9 13/16" x 4 3/4" (360mm x 250mm x 120mm)	Pan Configuration				
Refrigeration	Type	Fan Ventilated	Fan Ventilated	Fan Ventilated	Fan Ventilated
Refrigeration Display Area	Type	Deck	Deck	Deck	Deck
Operating Temperature	°F	-0.4°F	-0.4°F	-0.4°F	-0.4°F
Compressor	Nr./Type	1 / Hermetic	1 / Hermetic	1 / Hermetic	1 / Hermetic
Electric Supply	(V/Ph/Hz)	208-220/1/60	208-220/1/60	208-220/1/60	208-220/1/60
BTU'S @ -31°F Evap Temperature	BTU'S	1900	1900	2600	3100
Power Consumption	(W/A)	1700/9.1	1700/9.1	2200/11.5	2700/14.8
Defrost	Mode/Type	Hot Gas	Hot Gas	Hot Gas	Hot Gas
Climatic Class	°F/H.R.	75°F-55%RH	75°F-55%RH	75°F-55%RH	75°F-55%RH
Refrigerant Gas	Type	R404A / R452A	R404A / R452A	R404A / R452A	R404A / R452A
Pipe Size (Inches)	Suction, Liquid	5/8", 3/8"	5/8", 3/8"	5/8", 3/8"	5/8", 3/8"
Net Weights	Lbs	365	375	510	585
Crated Weights	Lbs	573	583	718	793
*DIMENSIONS ARE WITH POLISHED S/S SKIN SIDES			**PANS NOT INCLUDED		

*Oscartek reserves the right to change, modify, discontinue, or change any features, sizes, or capacity on any model without prior notice.

OSCARTEK®
 512 South Airport Blvd., South San Francisco, CA 94080
 Tel: 650.342.2400 | Fax: 650.342.7400
 www.oscartek.com

