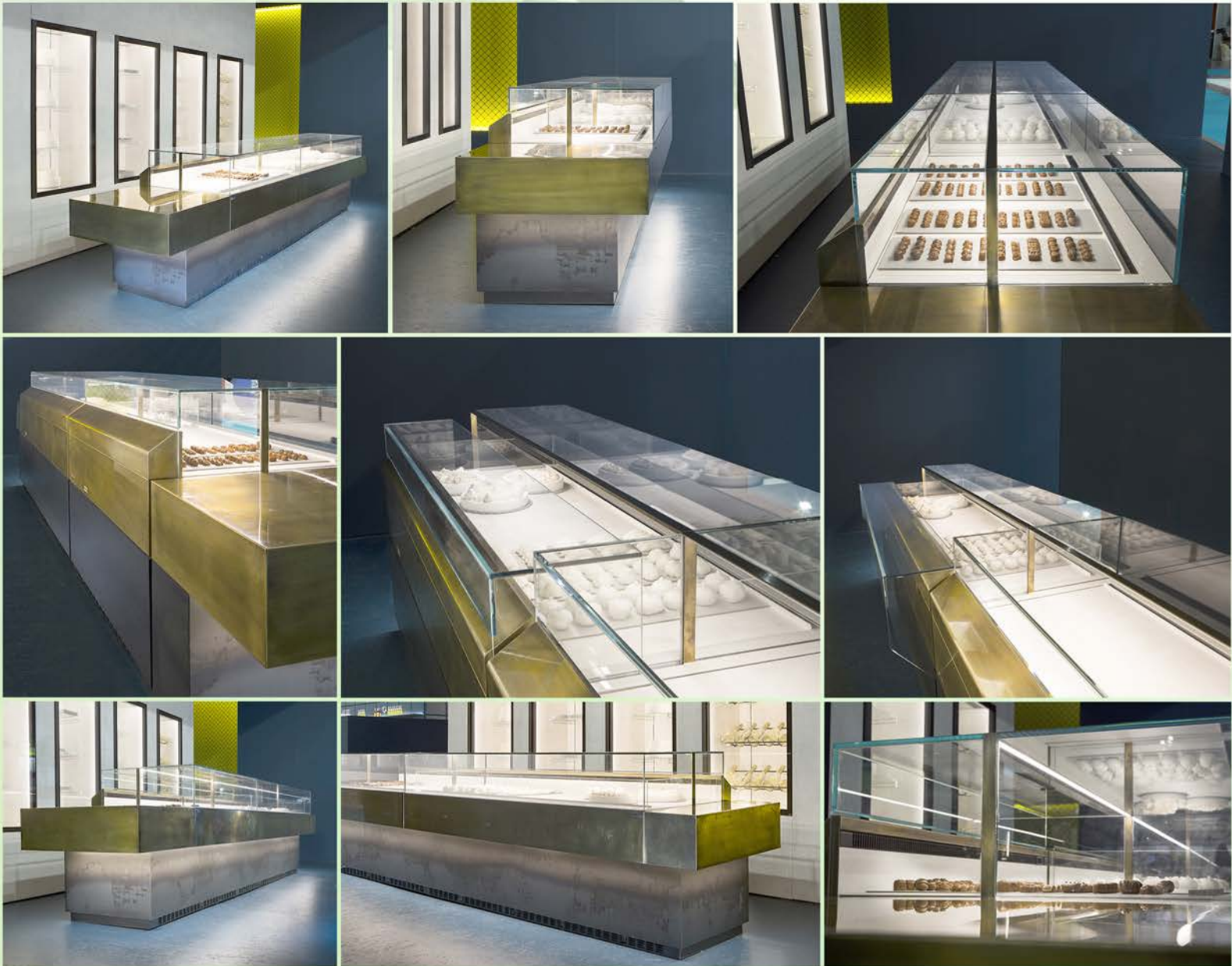


# Gem-Tek



361-367 Beach Road, Burlingame, CA 94010  
Tel: 855.885.2400 | 650.342.2400 | Fax: 650.342.7400  
sales@oscartek.com | www.oscartek.com





# Gem-Tek



361-367 Beach Road, Burlingame, CA 94010  
Tel: 855.885.2400 | 650.342.2400 | Fax: 650.342.7400  
sales@oscartek.com | www.oscartek.com





### STANDARD FEATURES

- Mechanical glass top/work counter
- Complete rear elevation
- LED lighting system
- Extra clear glass
- Lift-up mechanism for the display plate and the evaporator
- Cases ship standard unfinished

### OPTIONS

- Remote control automated top glass mechanism
- S/s position step
- S/s dry hot plate
- Remote condensing unit
- RAL color/laminate/steel color front & side panels
- Casters

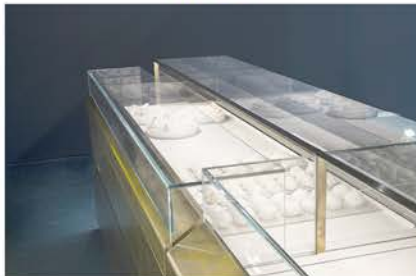


### How to access the glass top:

STEP 1



STEP 2



STEP 3



GEM-TEK DELI/PASTRY/CHOCOLATE					
TECHNICAL FEATURES		MODELS			
		GEM-TEK DPC900	GEM-TEK DPC1300	GEM-TEK DPC1700	GEM-TEK DPC2150
External Dimensions (L-D-H)	Inches	35 7/16" - 40 1/16" - 40 5/8"	51 3/16" - 40 1/16" - 40 5/8"	66 15/16" - 40 1/16" - 40 5/8"	84 5/8" - 40 1/16" - 40 5/8"
	Inches-MM	900 - 1017 - 1032	1300 - 1017 - 1032	1700 - 1017 - 1032	2150 - 1017 - 1032
Crated Dimensions (L-D-H)	Inches	43 1/3" - 47" - 47"	60" - 47" - 47"	75" - 47" - 47"	90 1/2" - 47" - 47"
	Inches-MM	1100 - 1193 - 1193	1500 - 1193 - 1193	1900 - 1193 - 1193	2300 - 1193 - 1193
Refrigeration	Type	Fan Ventilated	Fan Ventilated	Fan Ventilated	Fan Ventilated
Refrigeration Display Area	Type	Deck	Deck	Deck	Deck
Operating Temperature	°C / °F	4°C / 39°F	4°C / 39°F	4°C / 39°F	4°C / 39°F
Compressor	Nr./Type	1 / Hermetic	1 / Hermetic	1 / Hermetic	1 / Hermetic
BTU'S @ +14°F Evap Temperature (Chocolate: +35°F Evap Temp)	BTU's	1350 BTU'S	1945 BTU'S	2450 BTU'S	2975 BTU'S
Electric Supply**	(V/Ph/Hz)	230/1/50 (EU) 120/1/60 (USA)	230/1/50 (EU) 120/1/60 (USA)	230/1/50 (EU) 120/1/60 (USA)	230/1/50 (EU) 120/1/60 (USA)
Power Consumption	(W/A)	565W / 3.5A	680W / 4A	885W / 4.5A	885W / 4.5A
Defrost	Mode/Type	Automatic	Automatic	Automatic	Automatic
Climatic Class	N°/°C/F°/H.R.	4/30/86/55%	4/30/86/55%	4/30/86/55%	4/30/86/55%
Refrigerant Gas	Type	R404A	R404A	R404A	R404A
Net Weights	Kg/Lb	104Kgs / 229Lbs	127Kgs / 279Lbs	157Kgs / 346Lbs	172Kgs / 379Lbs
Crated Weights	Kg/Lb	164Kgs / 361Lbs	207Kgs / 456Lbs	257Kgs / 566Lbs	297Kgs / 654Lbs

\* DIMENSIONS ARE WITHOUT SIDE PANELS

\*\* CHOCOLATE 220V

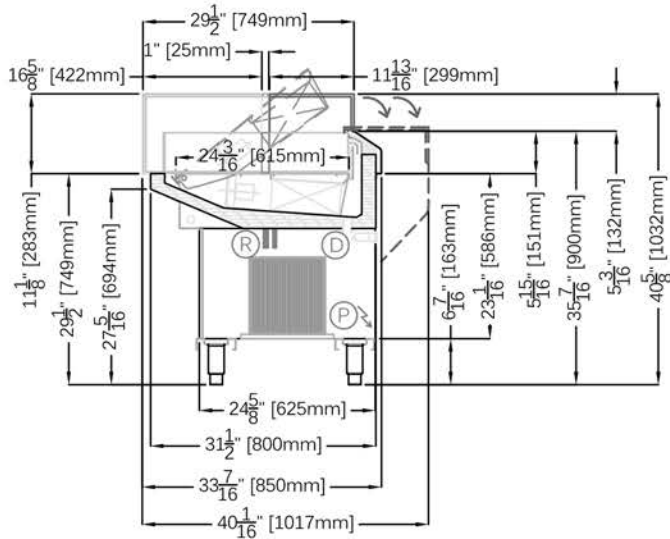
\* Manufacturer reserves the right to change specifications without notice. Not responsible for error and omissions.



361-367 Beach Road, Burlingame, CA 94010  
 Tel: 855.885.2400 | 650.342.2400 | Fax: 650.342.7400  
 sales@oscartek.com | www.oscartek.com

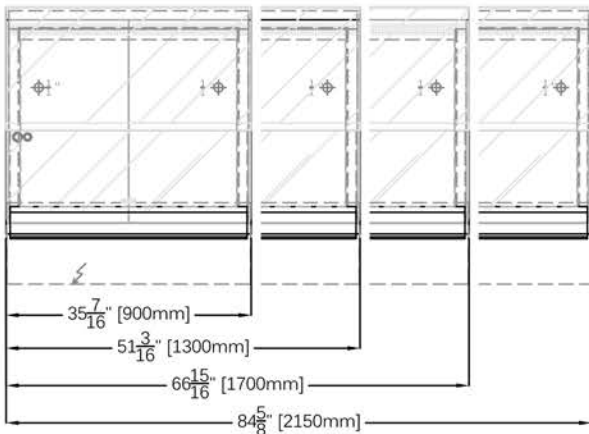


## SECTION VIEW

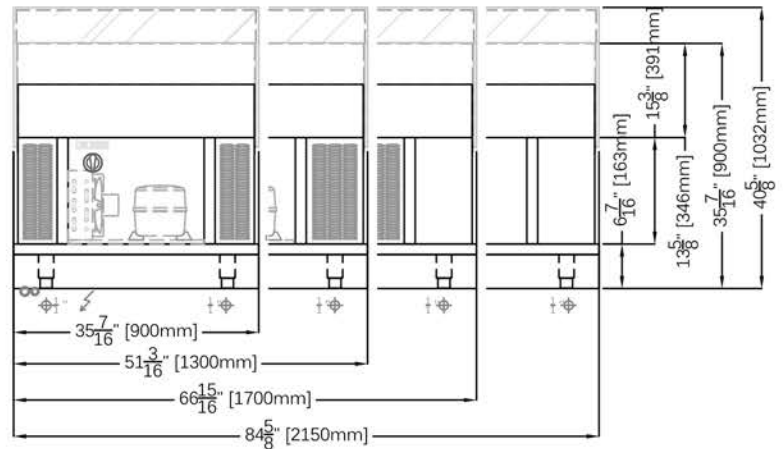


ELECTRICAL LEGEND	
R	REFRIGERATED LINES
D	DRAIN
P	POWER
∞	REFRIGERATED LINES
⊕"	DRAIN
⚡	POWER

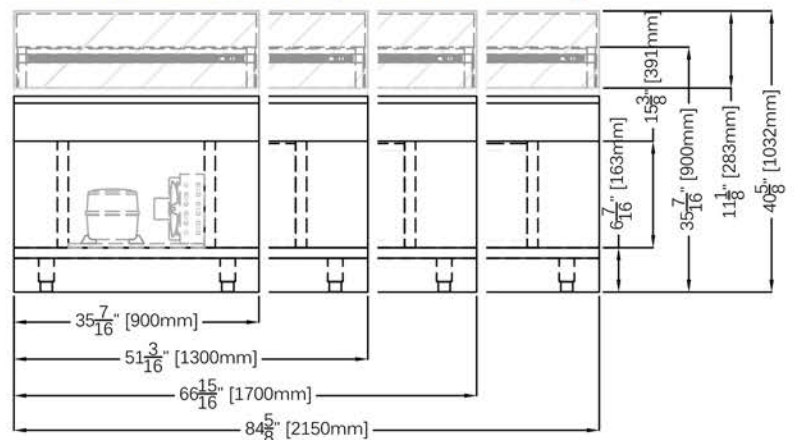
## PLAN VIEWS



## REAR ELEVATIONS (OPERATOR SIDE)



## FRONT ELEVATIONS (CUSTOMER SIDE)



\* Manufacturer reserves the right to change specifications without notice. Not responsible for error and omissions.