



Discover the Art of Display...

Project Name: _____
Item #: _____ Quantity: _____



Italia 2 Drop In with optional black frame



Sliding double pane back doors operator side



Visit our website for more RAL colors
www.oscartek.com

ITALIA 1-2-3 DROP IN DELI/PASTRY

ITALIA 1 MODELS: ITALIA 1 DI-DP900, ITALIA 1 DI-DP1200, ITALIA 1 DI-DP1500, ITALIA 1 DI-DP2000

ITALIA 2 MODELS: ITALIA 2 DI-DP900, ITALIA 2 DI-DP1200, ITALIA 2 DI-DP1500, ITALIA 2 DI-DP2000

ITALIA 3 MODELS: ITALIA 3 DI-DP900, ITALIA 3 DI-DP1200, ITALIA 3 DI-DP1500, ITALIA 3 DI-DP2000

STANDARD FEATURES

- Available in 3 heights: 44”H, 46”H, 51”H
- Maxi display volume perfectly refrigerated
- Diffused LED light 3000°K
- Sliding double pane doors closure on operator side
- Full volume temperature control
- Double glazed walls
- Electronic temperature control
- Perfectly visibility on all 4 sides
- Front, top, sides double glasses
- Glass frame in gray
- Cases ship standard unfinished

OPTIONS

- Italia 1-2-3 Narrow depth – 26 1/4”D
- Glass frame colors: black, white, and gold
- Custom RAL color glass frame or metal overlay
- Front access double doors
- Remote condensing unit

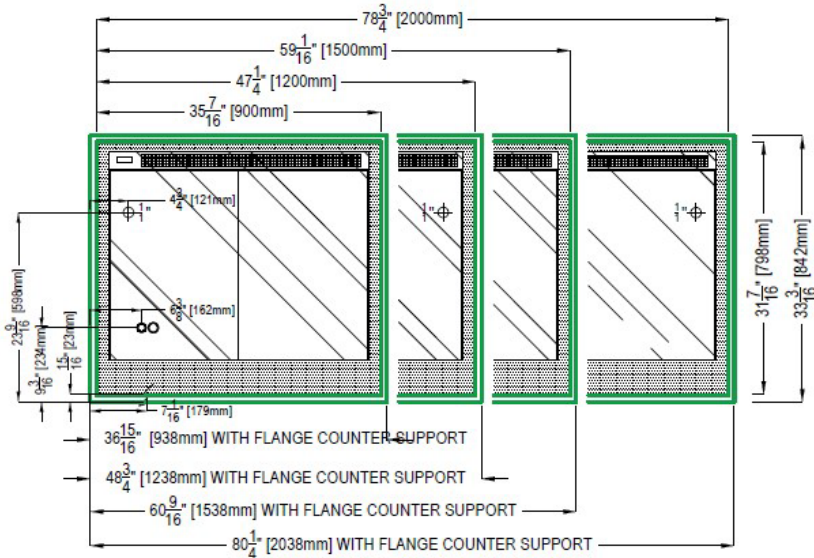
*Oscartek reserves the right to change, modify, discontinue, or change any features, sizes, or capacity on any model without prior notice.

OSCARTEK®
512 South Airport Blvd., South San Francisco, CA 94080
Tel: 650.342.2400 | Fax: 650.342.7400
www.oscartek.com



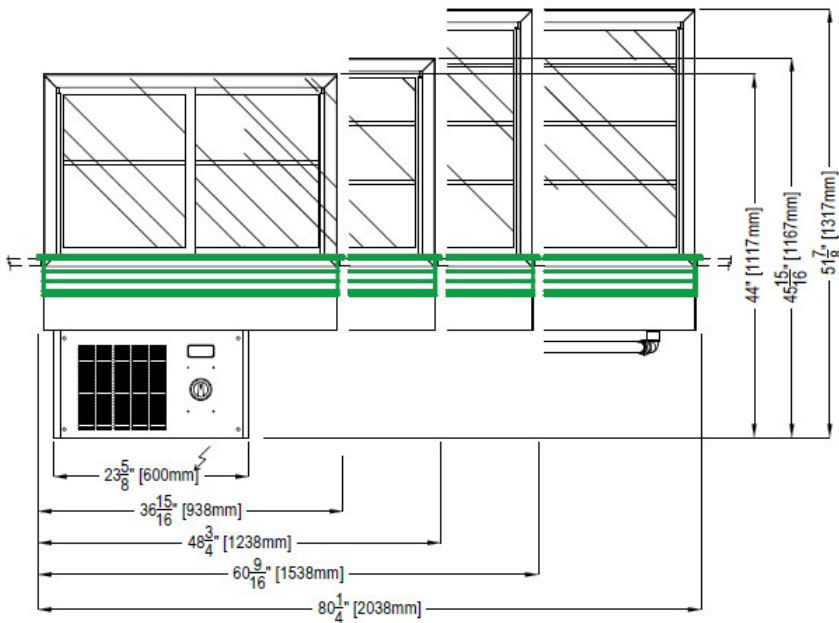
ITALIA 1 MODELS: ITALIA 1 DI-DP900, ITALIA 1 DI-DP1200, ITALIA 1 DI-DP1500, ITALIA 1 DI-DP2000
ITALIA 2 MODELS: ITALIA 2 DI-DP900, ITALIA 2 DI-DP1200, ITALIA 2 DI-DP1500, ITALIA 2 DI-DP2000
ITALIA 3 MODELS: ITALIA 3 DI-DP900, ITALIA 3 DI-DP1200, ITALIA 3 DI-DP1500, ITALIA 3 DI-DP2000

ITALIA 1-2-3 PLAN VIEWS:



ELECTRICAL LEGEND	
∞	REFRIGERATION LINES
ϕ 1/2"	DRAIN
⚡	POWER

ITALIA 1-2-3 REAR ELEVATIONS:

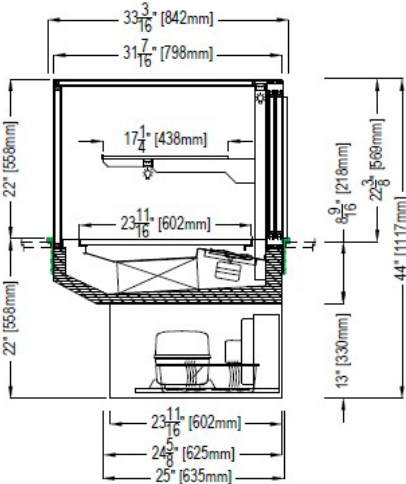


*Oscartek reserves the right to change, modify, discontinue, or change any features, sizes, or capacity on any model without prior notice.

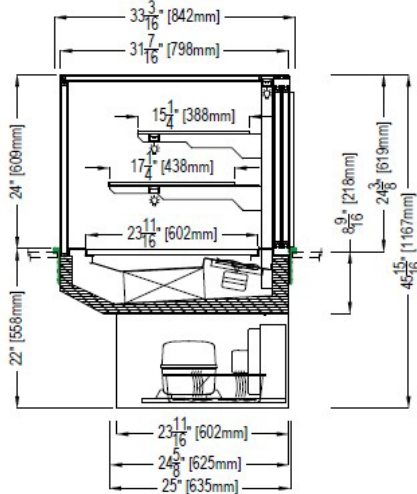
ITALIA 1 MODELS: ITALIA 1 DI-DP900, ITALIA 1 DI-DP1200, ITALIA 1 DI-DP1500, ITALIA 1 DI-DP2000
ITALIA 2 MODELS: ITALIA 2 DI-DP900, ITALIA 2 DI-DP1200, ITALIA 2 DI-DP1500, ITALIA 2 DI-DP2000
ITALIA 3 MODELS: ITALIA 3 DI-DP900, ITALIA 3 DI-DP1200, ITALIA 3 DI-DP1500, ITALIA 3 DI-DP2000

STANDARD: ITALIA 1-2-3 - 33"D SECTION VIEWS

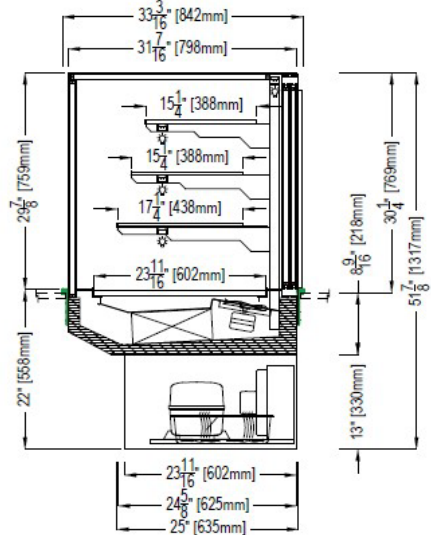
ITALIA 1 – 44"



ITALIA 2 – 45 15/16"

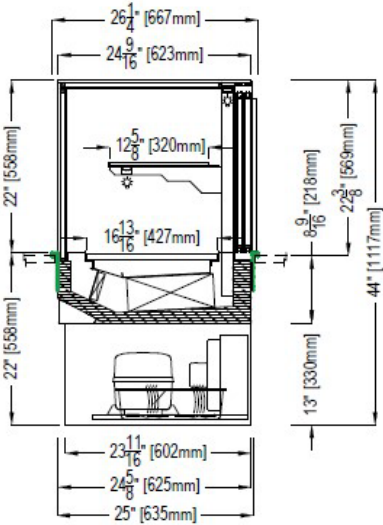


ITALIA 3 – 51 7/8"

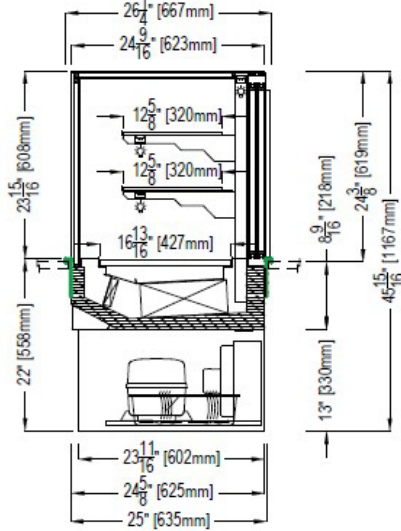


OPTIONAL: ITALIA 1-2-3 NARROW – 26"D SECTION VIEWS

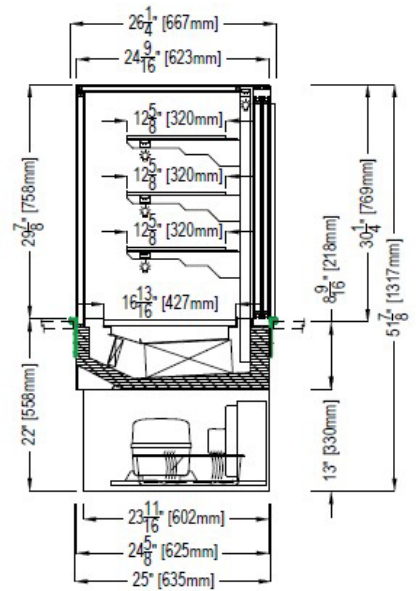
ITALIA 1 – 44"



ITALIA 2 – 45 15/16"



ITALIA 3 – 51 7/8"



*Oscartek reserves the right to change, modify, discontinue, or change any features, sizes, or capacity on any model without prior notice.



Discover the Art of Display...

Project Name: _____
 Item #: _____ Quantity: _____

ITALIA 1 MODELS: ITALIA 1 DI-DP900, ITALIA 1 DI-DP1200, ITALIA 1 DI-DP1500, ITALIA 1 DI-DP2000
ITALIA 2 MODELS: ITALIA 2 DI-DP900, ITALIA 2 DI-DP1200, ITALIA 2 DI-DP1500, ITALIA 2 DI-DP2000
ITALIA 3 MODELS: ITALIA 3 DI-DP900, ITALIA 3 DI-DP1200, ITALIA 3 DI-DP1500, ITALIA 3 DI-DP2000

ITALIA 1 DROP IN(DI) DELI/PASTRY					
TECHNICAL FEATURES		MODELS			
		ITALIA 1 DI- DP900	ITALIA 1 DI- DP1200	ITALIA 1 DI- DP1500	ITALIA 1 DI-DP2000
External Dimensions*(L-D-H) Inches-MM	Inches MM	*37" - 33 3/16" - 44" 938 - 842 - 1118	*48 3/4" - 33 3/16" - 44" 1238 - 842 - 1118	*60 9/16" - 33 3/16" - 44" 1538 - 842 - 1118	*80 1/4" - 33 3/16" - 44" 2038 - 842 - 1118
Crated Dimensions (L-D-H) Inches-MM	Inches MM	42" - 38" - 52" 1066 - 965 - 1320	54" - 38" - 52" 1371 - 965 - 1320	67" - 38" - 52" 1701 - 965 - 1320	85" - 38" - 52" 2159 - 965 - 1320
Refrigeration	Type	Ventilated	Ventilated	Ventilated	Ventilated
Refrigeration Display Area	Type	Deck + Shelf	Deck + Shelf	Deck + Shelf	Deck + Shelf
Operating Temperature	°F	39.2°F	39.2°F	39.2°F	39.2°F
Compressor	Nr./Type	1 / Hermetic	1 / Hermetic	1 / Hermetic	1 / Hermetic
BTU'S @ +14°F Expansion Temperature	BTU's	1750	2300	2950	3750
Electric Supply	V/Ph/Hz	115/1/60	115/1/60	115/1/60	115/1/60
Power Consumption	W/A	580/5.5	650/6.2	850/8.0	1200/11.4
Defrost	Mode/Type	Automatic	Automatic	Automatic	Automatic
Climatic Class	°F/H.R.	75°F-55%RH	75°F-55%RH	75°F-55%RH	75°F-55%RH
Refrigerant Gas	Type	R404A / R452A	R404A / R452A	R404A / R452A	R404A / R452A
Pipe Size (Inches)	Suction, Liquid	3/8" Suction, 1/4" Liquid	3/8" Suction, 1/4" Liquid	1/2" Suction, 1/4" Liquid	5/8" Suction, 5/16" Liquid
Net Weights	Lb	310	365	465	540
Crated Weights	Lb	360	415	540	615

*DIMENSIONS WITH FLANGE COUNTER SUPPORT

ITALIA 2 DROP IN(DI) DELI/PASTRY					
TECHNICAL FEATURES		MODELS			
		ITALIA 2 DI-DP900	ITALIA 2 DI- DP1200	ITALIA 2 DI- DP1500	ITALIA 2 DI- DP2000
External Dimensions*(L-D-H) Inches-MM	Inches MM	*37" - 33 3/16" - 46" 938 - 842 - 1167	*48 3/4" - 33 3/16" - 46" 1238 - 842 - 1167	*60 9/16" - 33 3/16" - 46" 1538 - 842 - 1167	*80 1/4" - 33 3/16" - 46" 2038 - 842 - 1167
Crated Dimensions (L-D-H) Inches-MM	Inches MM	42" - 38" - 54" 1066 - 965 - 1371	54" - 38" - 54" 1371 - 965 - 1371	67" - 38" - 54" 1701 - 965 - 1371	85" - 38" - 54" 2159 - 965 - 1371
Refrigeration	Type	Ventilated	Ventilated	Ventilated	Ventilated
Refrigeration Display Area	Type	Deck + Shelves	Deck + Shelves	Deck + Shelves	Deck + Shelves
Operating Temperature	°F	39.2°F	39.2°F	39.2°F	39.2°F
Compressor	Nr./Type	1 / Hermetic	1 / Hermetic	1 / Hermetic	1 / Hermetic
BTU'S @ +14°F Expansion Temperature	BTU's	1980	2660	3380	4090
Electric Supply	V/Ph/Hz	115/1/60	115/1/60	115/1/60	115/1/60
Power Consumption	W/A	580/5.5	650/6.2	850/8.0	1200/11.4
Defrost	Mode/Type	Automatic	Automatic	Automatic	Automatic
Climatic Class	°F/H.R.	75°F-55%RH	75°F-55%RH	75°F-55%RH	75°F-55%RH
Refrigerant Gas	Type	R404A / R452A	R404A / R452A	R404A / R452A	R404A / R452A
Pipe Size (Inches)	Suction, Liquid	3/8" Suction, 1/4" Liquid	3/8" Suction, 1/4" Liquid	1/2" Suction, 1/4" Liquid	5/8" Suction, 5/16" Liquid
Net Weights	Lb	330	400	510	595
Crated Weights	Lb	380	450	585	670

*DIMENSIONS WITH FLANGE COUNTER SUPPORT

*Oscartek reserves the right to change, modify, discontinue, or change any features, sizes, or capacity on any model without prior notice.

OSCARTEK®
 512 South Airport Blvd., South San Francisco, CA 94080
 Tel: 650.342.2400 | Fax: 650.342.7400
 www.oscartek.com





Project Name: _____
 Item #: _____ Quantity: _____

ITALIA 1 MODELS: ITALIA 1 DI-DP900, ITALIA 1 DI-DP1200, ITALIA 1 DI-DP1500, ITALIA 1 DI-DP2000
ITALIA 2 MODELS: ITALIA 2 DI-DP900, ITALIA 2 DI-DP1200, ITALIA 2 DI-DP1500, ITALIA 2 DI-DP2000
ITALIA 3 MODELS: ITALIA 3 DI-DP900, ITALIA 3 DI-DP1200, ITALIA 3 DI-DP1500, ITALIA 3 DI-DP2000

ITALIA 3 DROP IN(DI) DELI/PASTRY					
TECHNICAL FEATURES		MODELS			
		ITALIA 3 DI-DP900	ITALIA 3 DI-DP1200	ITALIA 3 DI-DP1500	ITALIA 3 DI-DP2000
External Dimensions* (L-D-H) Inches-MM	Inches MM	37" - 33 3/16" - 53 1/8" 938 - 842 - 1317	48 3/4" - 33 3/16" - 53 1/8" 1238 - 842 - 1317	60 9/16" - 33 3/16" - 53 1/8" 1538 - 842 - 1317	80 1/4" - 33 3/16" - 53 1/8" 2038 - 842 - 1317
Crated Dimensions (L-D-H) Inches-MM	Inches MM	42" - 38" - 60" 1066 - 965 - 1524	54" - 38" - 60" 1371 - 965 - 1524	67" - 38" - 60" 1701 - 965 - 1524	85" - 38" - 60" 2159 - 965 - 1524
Refrigeration	Type	Ventilated	Ventilated	Ventilated	Ventilated
Refrigeration Display Area	Type	Deck + Shelves	Deck + Shelves	Deck + Shelves	Deck + Shelves
Operating Temperature	°F	39.2°F	39.2°F	39.2°F	39.2°F
Compressor	Nr./Type	1 / Hermetic	1 / Hermetic	1 / Hermetic	1 / Hermetic
BTU'S @ +14°F Expansion Temperature	BTU's	2300	3200	3850	4900
Electric Supply	V/Ph/Hz	115/1/60	115/1/60	115/1/60	115/1/60
Power Consumption	W/A	750/6.9	950/8.5	1350/13.0	1500/14.4
Defrost	Mode/Type	Automatic	Automatic	Automatic	Automatic
Climatic Class	°F/H.R.	75°F-55%RH	75°F-55%RH	75°F-55%RH	75°F-55%RH
Refrigerant Gas	Type	R404A / R452A	R404A / R452A	R404A / R452A	R404A / R452A
Pipe Size (Inches)	Suction, Liquid	3/8" Suction, 1/4" Liquid	1/2" Suction, 1/4" Liquid	5/8" Suction, 5/16" Liquid	5/8" Suction, 5/16" Liquid
Net Weights	Lb	355	430	550	650
Crated Weights	Lb	405	480	625	725
*DIMENSIONS WITH FLANGE COUNTER SUPPORT					

*Oscartek reserves the right to change, modify, discontinue, or change any features, sizes, or capacity on any model without prior notice.

OSCARTEK®
 512 South Airport Blvd., South San Francisco, CA 94080
 Tel: 650.342.2400 | Fax: 650.342.7400
 www.oscartek.com

