

# ITALIA 1-2-3

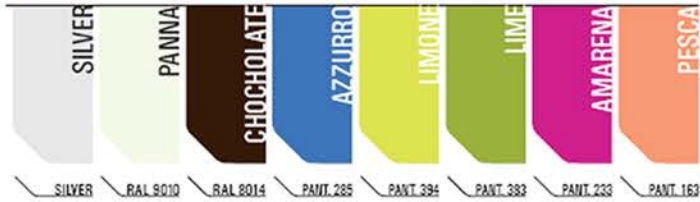
## Chocolate Showcase (SINGLE PANE)

### STANDARD FEATURES

- Humidity control
- Perfect visibility on all 4 sides
- Front, top and side single pane glasses
- Maxi display volume perfectly refrigerated
- LED lighting system
- Three heights available: 45"H, 49"H, and 53"H
- Sliding double pane doors closure on operator side
- Full volume temperature control
- Electronic temperature control
- Automatic evaporation system of condensate water
- Cases ship standard unfinished

### OPTIONS

- Front access double doors
- Cold storage
- 90° display case
- Remote condensing unit
- Decorative front finish
- Matches with Muro H11
- Casters



ITALIA 1 CHOCOLATE (SINGEL PANE)				
TECHNICAL FEATURES		ITALIA 1		
		ITALIA 1 CSP929	ITALIA 1 CSP1229	ITALIA 1 CSP1529
External Dimensions (L-D-H)	Inches	36 9/16" - 31 1/2" - 45 1/2"	48 3/8" - 31 1/2" - 45 1/2"	60 3/16" - 31 1/2" - 45 1/2"
	MM	929 - 800 - 1155	1229 - 800 - 1155	1529 - 800 - 1155
Crated Dimensions (L-D-H)	Inches	43 3/8" - 38" - 51"	55 1/8" - 38" - 51"	66 7/8" - 38" - 51"
	MM	1100 - 965 - 1295	1400 - 965 - 1295	1700 - 965 - 1295
Refrigeration	Type	Ventilated	Ventilated	Ventilated
Refrigeration Display Area	Type	Deck / Shelves	Deck / Shelves	Deck / Shelves
Operating Temperature	°C / °F	+14°C / 57.2°F	+14°C / 57.2°F	+14°C / 57.2°F
Compressor	Nr./Type	1 / Hermetic	1 / Hermetic	1 / Hermetic
BTU'S @ +35°F Evap Temperature	BTU's	2100 BTU'S	2950 BTU'S	3500 BTU'S
Electric Supply	(V/Ph/Hz)	230/1/50 (EU)	230/1/50 (EU)	230/1/50 (EU)
		220/1/60 (USA)	220/1/60 (USA)	220/1/60 (USA)
Power Consumption	(W/A)	580W / 3.2A	600W / 3.1A	900W / 5.1A
Defrost	Mode/Type	Automatic	Automatic	Automatic
Climatic Class	N°/°C/°F/H.R.	3/25/77/60%	3/25/77/60%	3/25/77/60%
Refrigerant Gas	Type	R404A	R404A	R404A
Net Weights	Kg/Lb	100Kgs / 220Lbs	130Kgs / 286Lbs	160Kgs / 352Lbs
Crated Weights	Kg/Lb	160Kgs / 352Lbs	210Kgs / 462Lbs	225Kgs / 496Lbs

NOTE: DIMENSIONS ARE WITH FRONT & SIDE PANELS

\* Manufacturer reserves the right to change specifications without notice. Not responsible for error and omissions.



361-367 Beach Road, Burlingame, CA 94010  
 Tel: 855.885.2400 | 650.342.2400 | Fax: 650.342.7400  
 sales@oscartek.com | www.oscartek.com



ITALIA 2 CHOCOLATE (SINGEL PANE)				
TECHNICAL FEATURES		ITALIA 2		
		ITALIA 2 CSP929	ITALIA 2 CSP1229	ITALIA 2 CSP1529
External Dimensions (L-D-H)	Inches	36 9/16" - 31 1/2" - 49 3/8"	48 3/8" - 31 1/2" - 49 3/8"	60 3/16" - 31 1/2" - 49 3/8"
	Inches-MM	929 - 800 - 1255	1229 - 800 - 1255	1529 - 800 - 1255
Crated Dimensions (L-D-H)	Inches	43 3/8" - 38" - 56"	55 1/8" - 38" - 56"	66 7/8" - 38" - 56"
	Inches-MM	1100 - 965 - 1422	1400 - 965 - 1422	1700 - 965 - 1422
Refrigeration	Type	Ventilated	Ventilated	Ventilated
Refrigeration Display Area	Type	Deck / Shelves	Deck / Shelves	Deck / Shelves
Operating Temperature	°C / °F	+14°C / 57.2°F	+14°C / 57.2°F	+14°C / 57.2°F
Compressor	Nr./Type	1 / Hermetic	1 / Hermetic	1 / Hermetic
BTU'S @ +35°F Evap Temperature	BTU's	2240 BTU'S	3045 BTU'S	3800 BTU'S
Electric Supply	(V/Ph/Hz)	230/1/50 (EU)	230/1/50 (EU)	230/1/50 (UE)
		220/1/60 (USA)	220/1/60 (USA)	220/1/60 (USA)
Power Consumption	(W/A)	600W / 3.1A	860W / 5.1A	910W / 5.1A
Defrost	Mode/Type	Automatic	Automatic	Automatic
Climatic Class	N°/°C/F°/H.R.	3/25/77/60%	3/25/77/60%	3/25/77/60%
Refrigerant Gas	Type	R404A	R404A	R404A
Net Weights	Kg/Lb	115Kgs / 253Lbs	150Kgs / 330Lbs	180Kgs / 396Lbs
Crated Weights	Kg/Lb	185Kgs / 407Lbs	235Kgs / 518Lbs	280Kgs / 617Lbs

NOTE: DIMENSIONS ARE WITH FRONT & SIDE PANELS

ITALIA 3 CHOCOLATE (SINGEL PANE)				
TECHNICAL FEATURES		ITALIA 3		
		ITALIA 3 CSP929	ITALIA 3 CSP1229	ITALIA 3 CSP1529
External Dimensions (L-D-H)	Inches	36 9/16" - 31 1/2" - 53 3/8"	48 3/8" - 31 1/2" - 53 3/8"	60 3/16" - 31 1/2" - 53 3/8"
	Inches-MM	929 - 800 - 1355	1229 - 800 - 1355	1529 - 800 - 1355
Crated Dimensions (L-D-H)	Inches	43 3/8" - 38" - 59"	55 1/8" - 38" - 59"	66 7/8" - 38" - 59"
	Inches-MM	1100 - 965 - 1500	1400 - 965 - 1500	1700 - 965 - 1500
Refrigeration	Type	Ventilated	Ventilated	Ventilated
Refrigeration Display Area	Type	Deck / Shelves	Deck / Shelves	Deck / Shelves
Operating Temperature	°C / °F	+14°C / 57.2°F	+14°C / 57.2°F	+14°C / 57.2°F
Compressor	Nr./Type	1 / Hermetic	1 / Hermetic	1 / Hermetic
BTU'S @ +35°F Evap Temperature	BTU's	2450 BTU'S	3400 BTU'S	3950 BTU'S
Electric Supply	(V/Ph/Hz)	230/1/50 (UE)	230/1/50 (UE)	230/1/50 (UE)
		220/1/60 (USA)	220/1/60 (USA)	220/1/60 (USA)
Power Consumption	(W/A)	650W / 3.5A	880W / 5.1A	1000W / 6A
Defrost	Mode/Type	Automatic	Automatic	Automatic
Climatic Class	N°/°C/F°/H.R.	3/25/77/60%	3/25/77/60%	3/25/77/60%
Refrigerant Gas	Type	R404A	R404A	R404A
Net Weights	Kg/Lb	130Kgs / 286Lbs	170Kgs / 374Lbs	200Kgs / 440Lbs
Crated Weights	Kg/Lb	202Kgs / 445Lbs	260Kgs / 454Lbs	310Kgs / 683Lbs

NOTE: DIMENSIONS ARE WITH FRONT & SIDE PANELS

\* Manufacturer reserves the right to change specifications without notice. Not responsible for error and omissions.



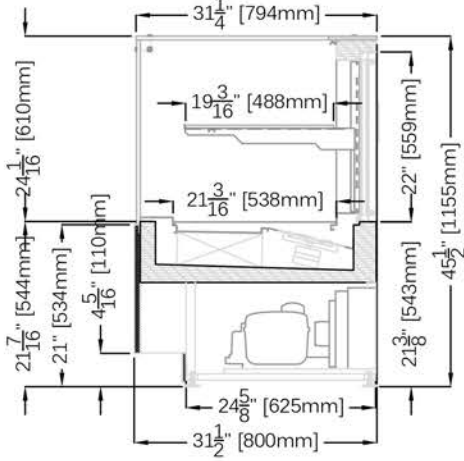
361-367 Beach Road, Burlingame, CA 94010  
 Tel: 855.885.2400 | 650.342.2400 | Fax: 650.342.7400  
 sales@oscartek.com | www.oscartek.com



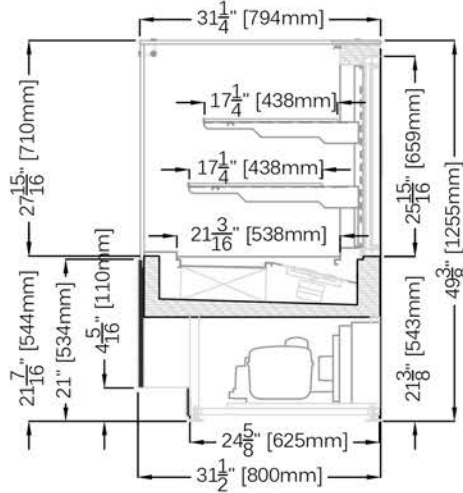
# ITALIA 1-2-3

# Chocolate Showcase (SINGLE PANE)

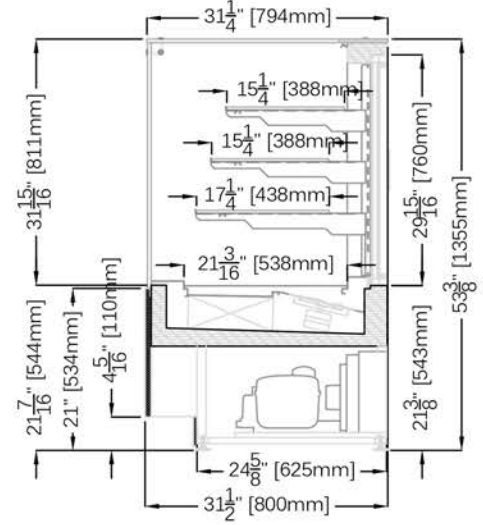
**ITALIA 1 - 45 1/2"H**



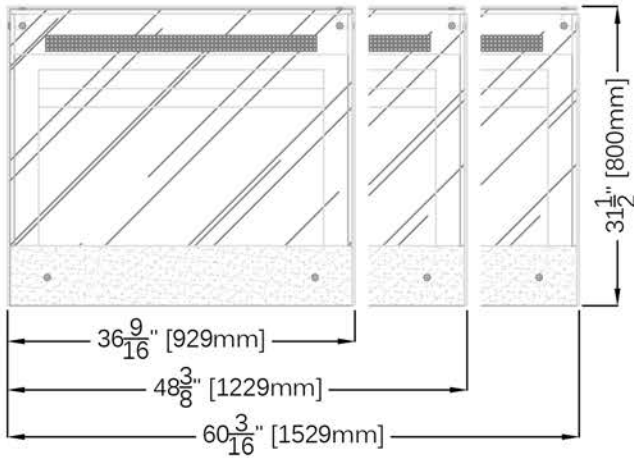
**ITALIA 2 - 49 3/8"H**



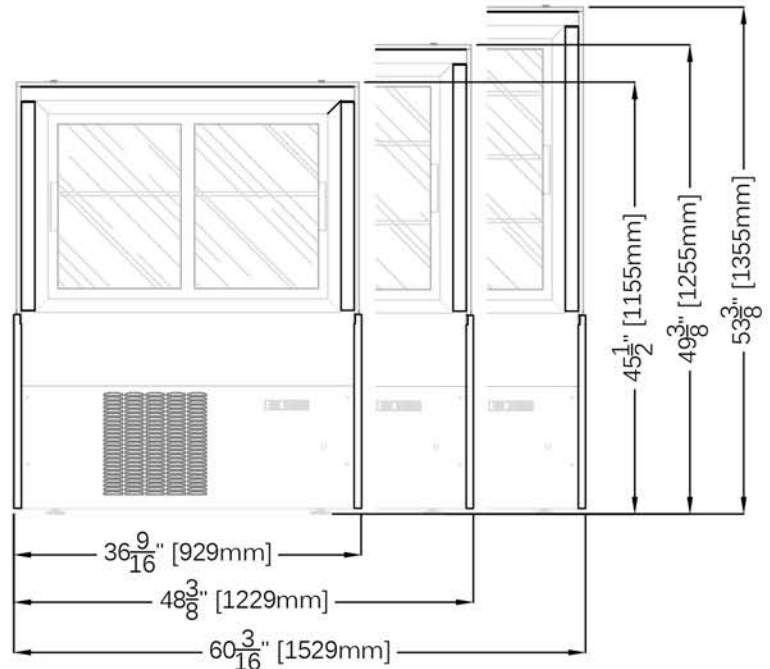
**ITALIA 3 - 53 3/8"H**



**PLAN VIEWS**



**REAR ELEVATIONS (OPERATOR SIDE)**



\* Manufacturer reserves the right to change specifications without notice. Not responsible for error and omissions.



361-367 Beach Road, Burlingame, CA 94010  
 Tel: 855.885.2400 | 650.342.2400 | Fax: 650.342.7400  
 sales@oscartek.com | www.oscartek.com

