

ITALIA 1-2-3

Deli/Pastry Showcase

STANDARD FEATURES

- Maxi display volume perfectly refrigerated
- LED lighting system
- Three heights available: 45"H, 49"H, and 53"H
- Sliding double pane doors closure on operator side
- Full volume temperature control
- Double glazed walls
- Electronic temperature control
- Automatic evaporation system of condensate water
- Perfect visibility on all 4 sides
- Front, top and side double glasses
- Cases ship standard unfinished

OPTIONS

- Front access double doors
- Lift up hydraulic double pane front glass
- Cold storage
- Glass frame colors: Black, White, and Gold
- Remote condensing unit
- Decorative front finish
- Matches with Muro H11
- Casters



ITALIA 1 DELI/PASTRY						
TECHNICAL FEATURES		ITALIA 1				
		ITALIA 1 DP900	ITALIA 1 DP1200	ITALIA 1 DP1500	ITALIA 1 DP2000	ITALIA 1 DP2100
External Dimensions (L-D-H)	Inches	35 9/16" - 30 15/16" - 45 1/4"	47 3/8" - 30 15/16" - 45 1/4"	59 3/16" - 30 15/16" - 45 1/4"	78 3/4" - 30 15/16" - 45 1/4"	84" - 30 15/16" - 45 1/4"
	Inches-MM	904 - 786 - 1149	1204 - 786 - 1149	1504 - 786 - 1149	2000 - 786 - 1149	2133 - 786 - 1149
Crated Dimensions (L-D-H)	Inches	43 3/8" - 39 3/8" - 55 1/8"	55 1/8" - 39 3/8" - 55 1/8"	66 7/8" - 39 3/8" - 55 1/8"	84" - 39 3/8" - 55 1/8"	90" - 39 3/8" - 55 1/8"
	Inches-MM	1100 - 1000 - 1400	1400 - 1000 - 1400	1700 - 1000 - 1400	2133 - 1000 - 1400	2286 - 1000 - 1400
Refrigeration	Type	Ventilated	Ventilated	Ventilated	Ventilated	Ventilated
Refrigeration Display Area	Type	Deck / Shelves	Deck / Shelves	Deck / Shelves	Deck / Shelves	Deck / Shelves
Operating Temperature	°C / °F	+4°C / 39.2°F	+4°C / 39.2°F	+4°C / 39.2°F	+4°C / 39.2°F	+4°C / 39.2°F
Compressor	Nr./Type	1 / Hermetic	1 / Hermetic	1 / Hermetic	1 / Hermetic	1 / Hermetic
BTU'S @ +14°F Evap Temperature	BTU's	2100 BTU'S	2950 BTU'S	3500 BTU'S	4820 BTU'S	5600 BTU'S
		230/1/50 (EU)	230/1/50 (EU)	230/1/50 (EU)	230/1/50 (EU)	230/1/50 (EU)
Electric Supply	(V/Ph/Hz)	120/1/60 (USA)	120/1/60 (USA)	120/1/60 (USA)	120/1/60 (USA)	120/1/60 (USA)
Power Consumption	(W/A)	720W / 6A	840W / 7A	960W / 8A	1080W / 9A	1200W / 10A
Defrost	Mode/Type	Automatic	Automatic	Automatic	Automatic	Automatic
Climatic Class	N°/°C/°F°/H.R.	3/25/77/60%	3/25/77/60%	3/25/77/60%	3/25/77/60%	3/25/77/60%
Refrigerant Gas	Type	R404A	R404A	R404A	R404A	R404A
Net Weights	Kg/Lb	100Kgs / 220Lbs	130Kgs / 286Lbs	160Kgs / 352Lbs	182Kgs / 402Lbs	205Kgs / 452Lbs
Crated Weights	Kg/Lb	160Kgs / 352Lbs	210Kgs / 462Lbs	225Kgs / 496Lbs	289Kgs / 638Lbs	322Kgs / 712Lbs

* Manufacturer reserves the right to change specifications without notice. Not responsible for error and omissions.



361-367 Beach Road, Burlingame, CA 94010
 Tel: 855.885.2400 | 650.342.2400 | Fax: 650.342.7400
 sales@oscartek.com | www.oscartek.com



ITALIA 1 DELI/PASTRY			
TECHNICAL FEATURES		ITALIA 1	
		ITALIA 1 A1-A90	ITALIA 1 A2-A90
External Dimensions (L-D-H)	Inches	** 54 7/16" - 30 15/16" - 45 1/4"	** 78" - 30 15/16" - 45 1/4"
	MM	1383 - 786 - 1149	1981 - 786 - 1149
Crated Dimensions (L-D-H)	Inches	60" - 39 3/8" - 55 1/8"	84" - 39 3/8" - 55 1/8"
	MM	1524 - 1000 - 1400	2133 - 1000 - 1400
Refrigeration	Type	Ventilated	Ventilated
Refrigeration Display Area	Type	Deck / Shelves	Deck / Shelves
Operating Temperature	°C / °F	+4°C / 39.2°F	+4°C / 39.2°F
Compressor	Nr./Type	1 / Hermetic	1 / Hermetic
BTU'S @ +14°F Evap Temperature	BTU's	7500 BTU'S	8400 BTU'S
		230/1/50 (UE)	230/1/50 (UE)
		208-220/1/60 (USA)	208-220/1/60 (USA)
Electric Supply	(V/Ph/Hz)		
Power Consumption	(W/A)	1320W / 8A	1440W / 8.3A
Defrost	Mode/Type	Automatic	Automatic
Climatic Class	N°/°C/°F°/H.R.	3/25/77/60%	3/25/77/60%
Refrigerant Gas	Type	R404A	R404A
Net Weights	Kg/Lb	327Kgs / 721Lbs	327Kgs / 721Lbs
Crated Weights	Kg/Lb	349Kgs / 771Lbs	349Kgs / 771Lbs

** SEE PLAN VIEW FOR ADDITIONAL EXTERIOR DIMENSIONS

ITALIA 2 DELI/PASTRY						
TECHNICAL FEATURES		ITALIA 2				
		ITALIA 2 DP900	ITALIA 2 DP1200	ITALIA 2 DP1500	ITALIA 2 DP2000	ITALIA 2 DP2100
External Dimensions (L-D-H)	Inches	35 9/16" - 30 15/16" - 49 3/16"	47 3/8" - 30 15/16" - 49 3/16"	59 3/16" - 30 15/16" - 49 3/16"	78 3/4" - 30 15/16" - 49 3/16"	84" - 30 15/16" - 49 3/16"
	MM	904 - 786 - 1249	1204 - 786 - 1249	1504 - 786 - 1249	1504 - 786 - 1249	2133 - 786 - 1249
Crated Dimensions (L-D-H)	Inches	43 3/8" - 39 3/8" - 59"	55 1/8" - 39 3/8" - 59"	66 7/8" - 39 3/8" - 59"	84" - 39 3/8" - 59"	90" - 39 3/8" - 59"
	MM	1100 - 1000 - 1500	1400 - 1000 - 1500	1700 - 1000 - 1500	2133 - 1000 - 1500	2286 - 1000 - 1500
Refrigeration	Type	Ventilated	Ventilated	Ventilated	Ventilated	Ventilated
Refrigeration Display Area	Type	Deck / Shelves	Deck / Shelves	Deck / Shelves	Deck / Shelves	Deck / Shelves
Operating Temperature	°C / °F	+4°C / 39.2°F	+4°C / 39.2°F	+4°C / 39.2°F	+4°C / 39.2°F	+4°C / 39.2°F
Compressor	Nr./Type	1 / Hermetic	1 / Hermetic	1 / Hermetic	1 / Hermetic	1 / Hermetic
BTU'S @ +14°F Evap Temperature	BTU's	2240 BTU'S	3045 BTU'S	3800 BTU'S	4820 BTU'S	5600 BTU'S
		230/1/50 (EU)	230/1/50 (EU)	230/1/50 (UE)	230/1/50 (UE)	230/1/50 (UE)
		120/1/60 (USA)	120/1/60 (USA)	120/1/60 (USA)	120/1/60 (USA)	120/1/60 (USA)
Electric Supply	(V/Ph/Hz)					
Power Consumption	(W/A)	720W / 6A	840W / 7A	960W / 8A	1080W / 9A	1200W / 10A
Defrost	Mode/Type	Automatic	Automatic	Automatic	Automatic	Automatic
Climatic Class	N°/°C/°F°/H.R.	3/25/77/60%	3/25/77/60%	3/25/77/60%	3/25/77/60%	3/25/77/60%
Refrigerant Gas	Type	R404A	R404A	R404A	R404A	R404A
Net Weights	Kg/Lb	115Kgs / 253Lbs	150Kgs / 330Lbs	180Kgs / 396Lbs	345Kgs / 762Lbs	382Kgs / 843Lbs
Crated Weights	Kg/Lb	185Kgs / 407Lbs	235Kgs / 518Lbs	280Kgs / 617Lbs	368Kgs / 812Lbs	405Kgs / 893Lbs

ITALIA 2 DELI/PASTRY			
TECHNICAL FEATURES		ITALIA 2	
		ITALIA 2 A1-A90	ITALIA 2 A2-A90
External Dimensions (L-D-H)	Inches	** 54 7/16" - 30 15/16" - 49 3/16"	** 78" - 30 15/16" - 49 3/16"
	MM	1383 - 786 - 1249	1981 - 786 - 1249
Crated Dimensions (L-D-H)	Inches	60" - 39 3/8" - 59"	84" - 39 3/8" - 59"
	MM	1524 - 1000 - 1500	2133 - 1000 - 1500
Refrigeration	Type	Ventilated	Ventilated
Refrigeration Display Area	Type	Deck / Shelves	Deck / Shelves
Operating Temperature	°C / °F	+4°C / 39.2°F	+4°C / 39.2°F
Compressor	Nr./Type	1 / Hermetic	1 / Hermetic
BTU'S @ +14°F Evap Temperature	BTU's	7500 BTU'S	8400 BTU'S
		230/1/50 (UE)	230/1/50 (UE)
		208-220/1/60 (USA)	208-220/1/60 (USA)
Electric Supply	(V/Ph/Hz)		
Power Consumption	(W/A)	1320W / 9A	1440W / 9.2A
Defrost	Mode/Type	Automatic	Automatic
Climatic Class	N°/°C/°F°/H.R.	3/25/77/60%	3/25/77/60%
Refrigerant Gas	Type	R404A	R404A
Net Weights	Kg/Lb	327Kgs / 721Lbs	327Kgs / 721Lbs
Crated Weights	Kg/Lb	349Kgs / 771Lbs	349Kgs / 771Lbs

** SEE PLAN VIEW FOR ADDITIONAL EXTERIOR DIMENSIONS

* Manufacturer reserves the right to change specifications without notice. Not responsible for error and omissions.



361-367 Beach Road, Burlingame, CA 94010
 Tel: 855.885.2400 | 650.342.2400 | Fax: 650.342.7400
 sales@oscartek.com | www.oscartek.com



ITALIA 3 DELI/PASTRY					
TECHNICAL FEATURES		ITALIA 3			
		ITALIA 3 DP900	ITALIA 3 DP1200	ITALIA 3 DP1500	ITALIA 3 DP2000
External Dimensions (L-D-H)	Inches	35 9/16" - 30 15/16" - 53 1/8"	47 3/8" - 30 15/16" - 53 1/8"	59 3/16" - 30 15/16" - 53 1/8"	78 3/4" - 30 15/16" - 53 1/8"
	MM	904 - 786 - 1349	1204 - 786 - 1349	1504 - 786 - 1349	2000 - 786 - 1349
Crated Dimensions (L-D-H)	Inches	43 3/8" - 39 3/8" - 63"	55 1/8" - 39 3/8" - 63"	66 7/8" - 39 3/8" - 63"	84" - 39 3/8" - 63"
	MM	1100 - 1000 - 1600	1400 - 1000 - 1600	1700 - 1000 - 1600	2133 - 1000 - 1600
Refrigeration	Type	Ventilated	Ventilated	Ventilated	Ventilated
Refrigeration Display Area	Type	Deck / Shelves	Deck / Shelves	Deck / Shelves	Deck / Shelves
Operating Temperature	°C / °F	+4°C / 39.2°F	+4°C / 39.2°F	+4°C / 39.2°F	+4°C / 39.2°F
Compressor	Nr./Type	1 / Hermetic	1 / Hermetic	1 / Hermetic	1 / Hermetic
Temperature	BTU's	2450 BTU'S	3400 BTU'S	3950 BTU'S	4820 BTU'S
Electric Supply	(V/Ph/Hz)	230/1/50 (UE) 120/1/60 (USA)	230/1/50 (UE) 120/1/60 (USA)	230/1/50 (UE) 120/1/60 (USA)	230/1/50 (UE) 120/1/60 (USA)
Power Consumption	(W/A)	720W / 6A	840W / 7A	960W / 8A	1080W / 9A
Defrost	Mode/Type	Automatic	Automatic	Automatic	Automatic
Climatic Class	N°°C/F°/H.R.	3/25/77/60%	3/25/77/60%	3/25/77/60%	3/25/77/60%
Refrigerant Gas	Type	R404A	R404A	R404A	R404A
Net Weights	Kg/Lb	130Kgs / 286Lbs	170Kgs / 374Lbs	200Kgs / 440Lbs	385Kgs / 850Lbs
Crated Weights	Kg/Lb	202Kgs / 445Lbs	260Kgs / 454Lbs	310Kgs / 683Lbs	310Kgs / 855Lbs

ITALIA 3 DELI/PASTRY				
TECHNICAL FEATURES		ITALIA 3		
		ITALIA 3 DP2100	ITALIA 3 A1-A90	ITALIA 3 A2-A90
External Dimensions (L-D-H)	Inches	84" - 30 15/16" - 53 1/8"	** 54 7/16" - 30 15/16" - 53 1/8"	** 78" - 30 15/16" - 53 1/8"
	MM	2133 - 786 - 1349	1383 - 786 - 1349	1981 - 786 - 1349
Crated Dimensions (L-D-H)	Inches	90" - 39 3/8" - 63"	60" - 39 3/8" - 63"	84" - 39 3/8" - 63"
	MM	2286 - 1000 - 1600	1524 - 1000 - 1600	2133 - 1000 - 1600
Refrigeration	Type	Ventilated	Ventilated	Ventilated
Refrigeration Display Area	Type	Deck / Shelves	Deck / Shelves	Deck / Shelves
Operating Temperature	°C / °F	+4°C / 39.2°F	+4°C / 39.2°F	+4°C / 39.2°F
Compressor	Nr./Type	1 / Hermetic	1 / Hermetic	1 / Hermetic
BTU'S @ +14°F Evap Temperature	BTU's	5600 BTU'S	7500 BTU'S	8400 BTU'S
Electric Supply	(V/Ph/Hz)	230/1/50 (UE) 120/1/60 (USA)	230/1/50 (UE) 220/1/60 (USA)	230/1/50 (UE) 220/1/60 (USA)
Power Consumption	(W/A)	1200W / 10A	1320W / 11A	1440W / 12A
Defrost	Mode/Type	Automatic	Automatic	Automatic
Climatic Class	N°°C/F°/H.R.	3/25/77/60%	3/25/77/60%	3/25/77/60%
Refrigerant Gas	Type	R404A	R404A	R404A
Net Weights	Kg/Lb	424Kgs / 936Lbs	327Kgs / 721Lbs	327Kgs / 721Lbs
Crated Weights	Kg/Lb	310Kgs / 986Lbs	349Kgs / 771Lbs	349Kgs / 771Lbs

** SEE PLAN VIEW FOR ADDITIONAL EXTERIOR DIMENSIONS

* Manufacturer reserves the right to change specifications without notice. Not responsible for error and omissions.



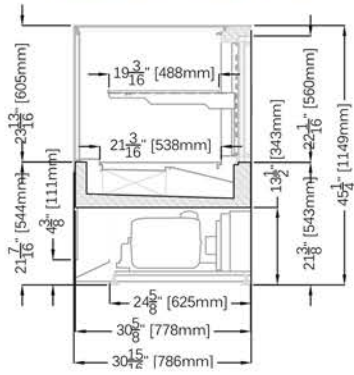
361-367 Beach Road, Burlingame, CA 94010
 Tel: 855.885.2400 | 650.342.2400 | Fax: 650.342.7400
 sales@oscartek.com | www.oscartek.com



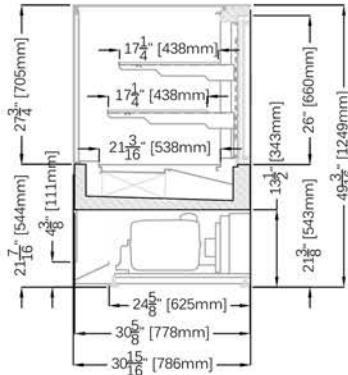
ITALIA 1-2-3

Deli/Pastry Showcase

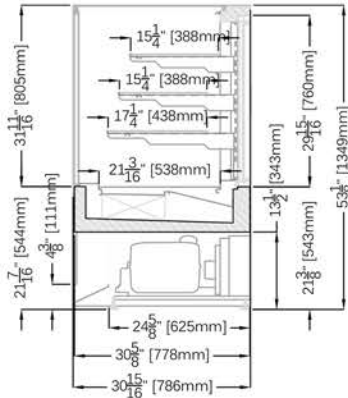
ITALIA 1 - 45 1/4" H



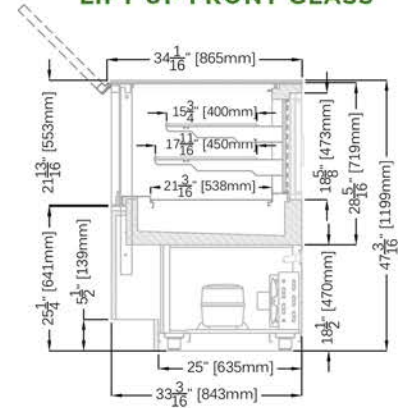
ITALIA 2 - 49 3/16" H



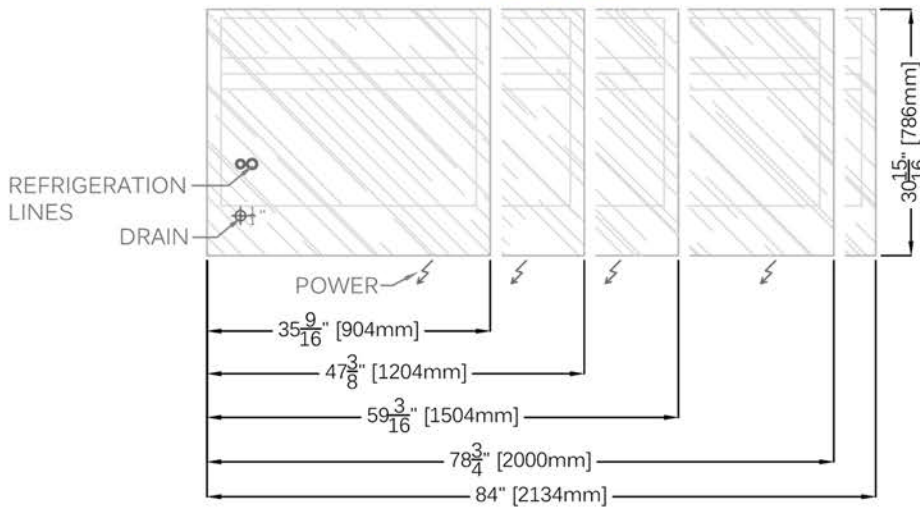
ITALIA 3 - 53 1/8" H



**OPTIONAL:
LIFT UP FRONT GLASS**

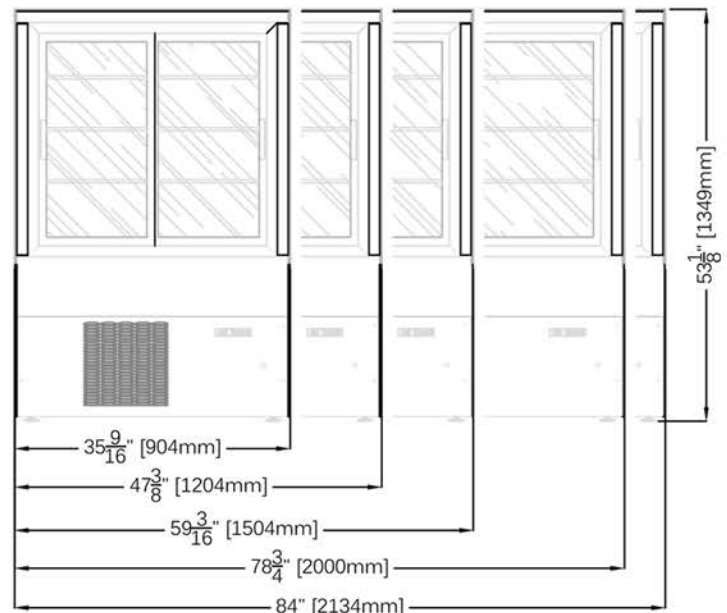


PLAN VIEW



ELECTRICAL LEGEND	
	REFRIGERATED LINES
	DRAIN
	POWER

REAR ELEVATION (OPERATOR SIDE)



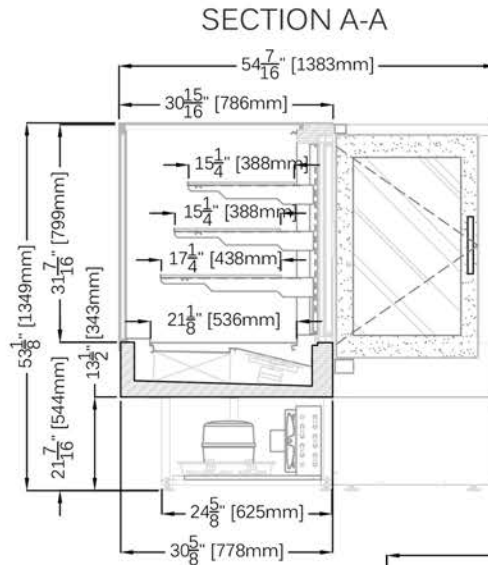
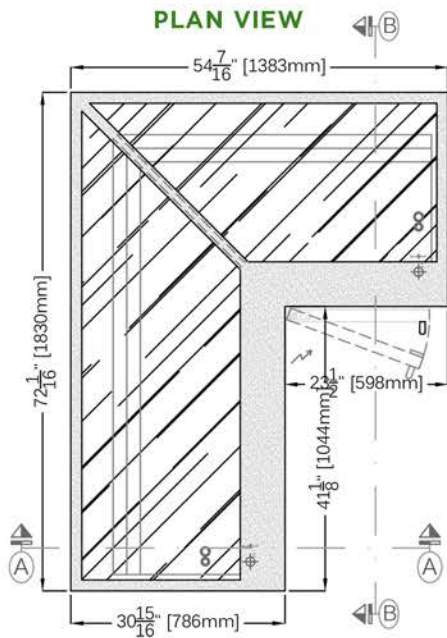
* Manufacturer reserves the right to change specifications without notice. Not responsible for error and omissions.



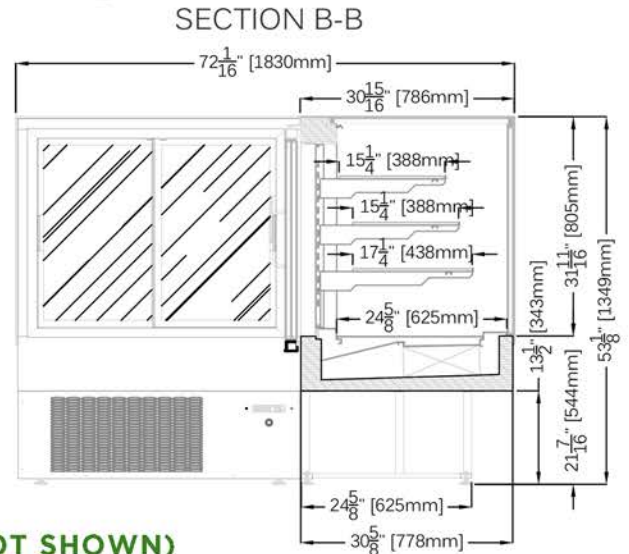
361-367 Beach Road, Burlingame, CA 94010
 Tel: 855.885.2400 | 650.342.2400 | Fax: 650.342.7400
 sales@oscartek.com | www.oscartek.com



ITALIA 3 A1-A90 (AVAILABLE IN ITALIA 1 & ITALIA 2 - NOT SHOWN)

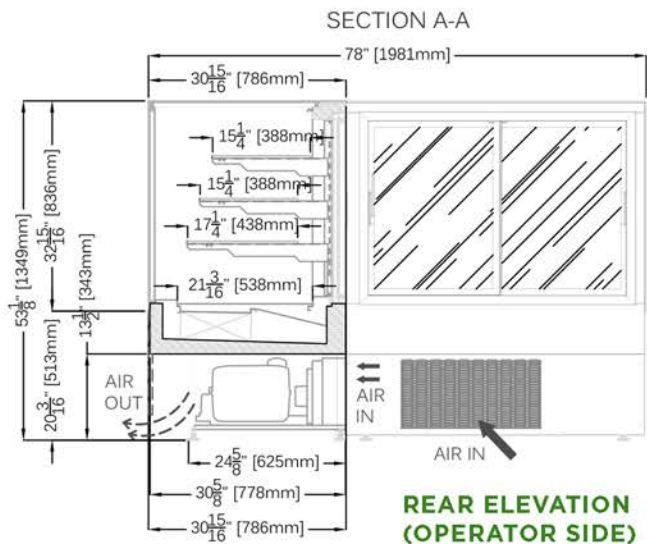
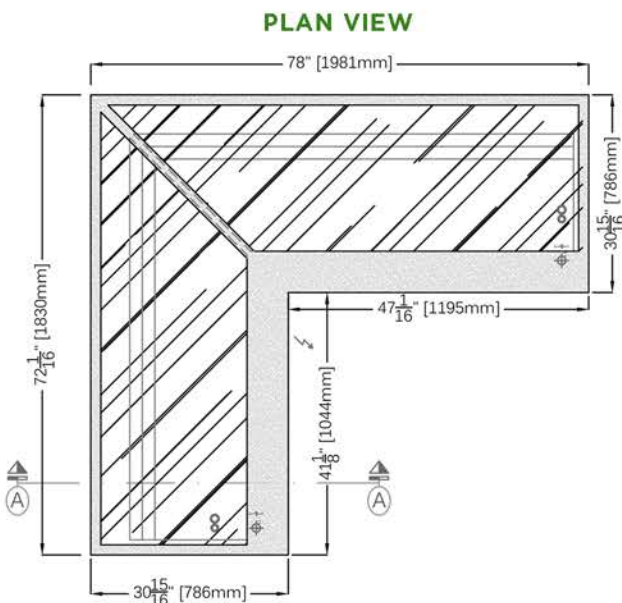


**REAR ELEVATIONS
(OPERATOR SIDE)**



ELECTRICAL LEGEND	
	REFRIGERATED LINES
	DRAIN
	POWER

ITALIA 3 A2-A90 (AVAILABLE IN ITALIA 1 & ITALIA 2 - NOT SHOWN)



**REAR ELEVATION
(OPERATOR SIDE)**

* Manufacturer reserves the right to change specifications without notice. Not responsible for error and omissions.