

## STANDARD FEATURES

- Double pane lift-up front glass
- Double pane side glasses
- Stainless steel cold wall static cooling insulated bin to retain ice
- Insulated stainless steel interior and exterior
- Built in drain for cleaning
- Diffused LED lighting 3000°K
- Plexiglas sliding doors
- Floor sink is required
- Cases ship standard unfinished

## OPTIONS

- Roll down curtain
- Paper holder
- Scale holder
- RAL color/laminate front and side panels
- Casters



LA CROSSE FISH					
TECHNICAL FEATURES		MODELS			
		LA CROSSE F1150	LA CROSSE F1650	LA CROSSE F2150	LA CROSSE FA90
External Dimensions (L-D-H)	Inches	*46 7/8" - 45 3/8" - 45 1/4"	*66 9/16" - 45 3/8" - 45 1/4"	*86 1/4" - 45 3/8" - 45 1/4"	*63 5/8" - 45 3/8" - 45 1/4"
	Inches-MM	*1190 - 1152 - 1150	*1690 - 1152 - 1150	*2190 - 1152 - 1150	*1616 - 1152 - 1150
Crated Dimensions (L-D-H)	Inches	53 7/8" - 53 7/8" - 55 1/8"	73 5/8" - 53 7/8" - 55 1/8"	93 1/4" - 53 7/8" - 55 1/8"	70" - 53 7/8" - 55 1/8"
	Inches-MM	1370 - 1370 - 1400	1870 - 1370 - 1400	2368 - 1370 - 1400	1778 - 1370 - 1400
Operating Temperature	°F	36°F	36°F	36°F	36°F
BTU's @ +14°F Evap Temperature	BTU's	2400 BTU'S	3330 BTU'S	3625 BTU'S	5200 BTU'S
Electric Supply	(V/Ph/Hz)	230/1/50 (EU)	230/1/50 (EU)	230/1/50 (EU)	230/1/50 (EU)
		120/1/60 (USA)	120/1/60 (USA)	120/1/60 (USA)	120/1/60 (USA)
Power Consumption	(W/A)	420W / 2.5A	650W / 4A	850W / 4.5A	1050W / 6A
Net Weights	Kg/Lb	200Kgs / 440Lbs	290Kgs / 639Lbs	330Kgs / 727Lbs	340Kgs / 749Lbs
Crated Weights	Kg/Lb	305Kgs / 672Lbs	435Kgs / 959Lbs	510Kgs / 1124Lbs	535Kgs / 1179Lbs

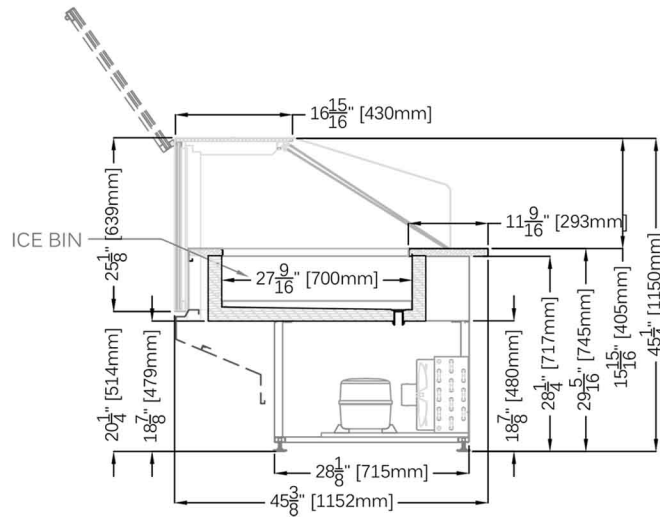
\* DIMENSIONS ARE WITHOUT SIDE PANELS

\* Manufacturer reserves the right to change specifications without notice. Not responsible for error and omissions.



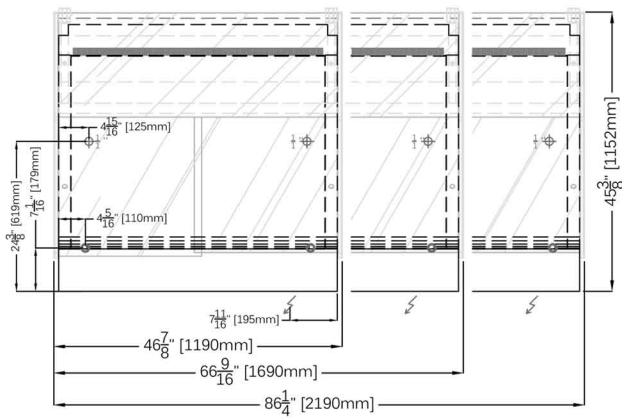
361-367 Beach Road, Burlingame, CA 94010  
 Tel: 855.885.2400 | 650.342.2400 | Fax: 650.342.7400  
 sales@oscartek.com | www.oscartek.com



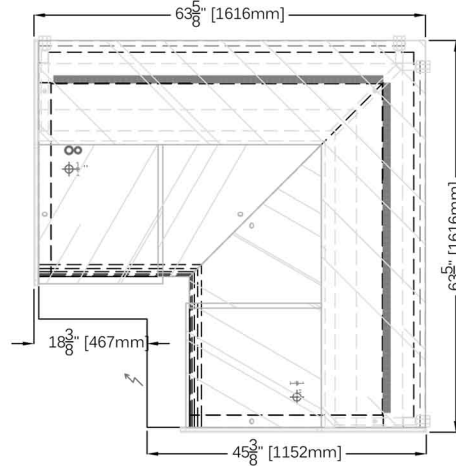


**PLAN VIEWS: LA CROSSE F1150, LA CROSSE F1650, LA CROSSE F2150, LA CROSSE FA90**

**LA CROSSE LINEAR MODELS**

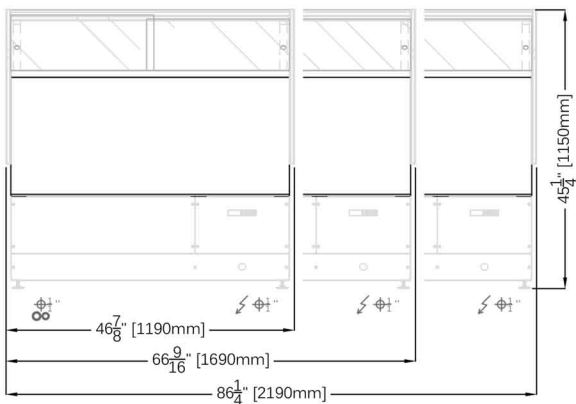


**LA CROSSE FA90**

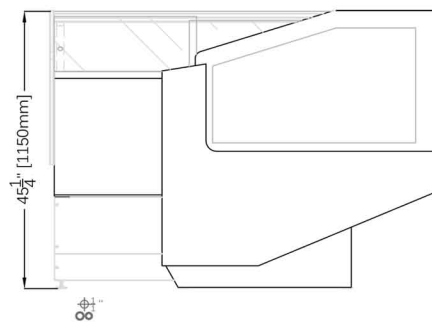


**REAR ELEVATIONS (OPERATOR SIDE): LA CROSSE F1150, LA CROSSE F1650, LA CROSSE F2150, LA CROSSE FA90**

**LA CROSSE LINEAR MODELS**



**LA CROSSE FA90**



ELECTRICAL LEGEND	
	REFRIGERATED LINES
	DRAIN
	POWER

\* Manufacturer reserves the right to change specifications without notice. Not responsible for error and omissions.



361-367 Beach Road, Burlingame, CA 94010  
 Tel: 855.885.2400 | 650.342.2400 | Fax: 650.342.7400  
 sales@oscartek.com | www.oscartek.com

