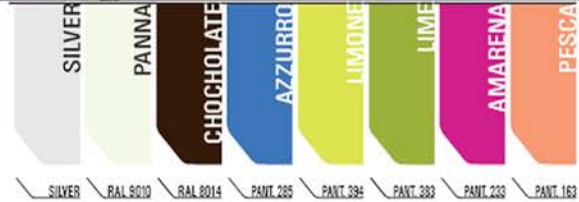
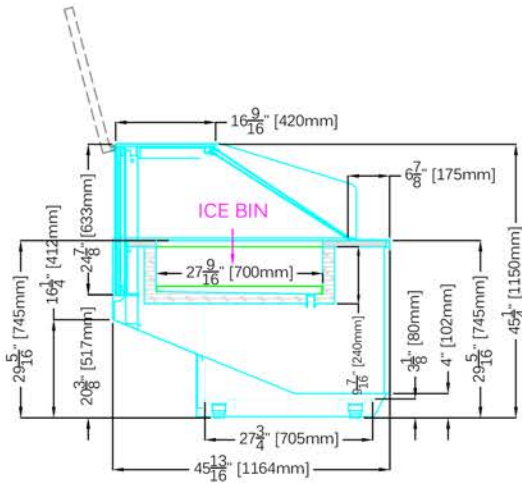


PERFORMER

Fish Showcase



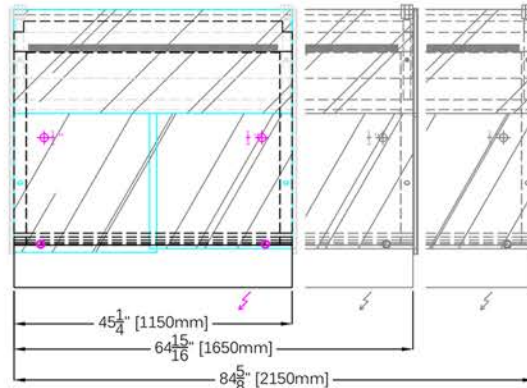
STANDARD FEATURES

- Double pane lift-up front glass
- Double pane side glasses
- Stainless steel cold wall static cooling insulated bin to retain ice
- Insulated stainless steel interior and exterior
- Built in drain for cleaning
- LED lighting
- Plexiglas sliding doors
- Floor sink is required
- Cases ship standard unfinished

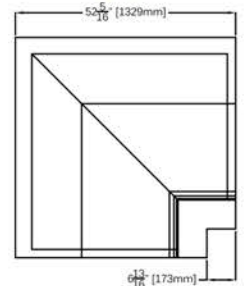
OPTIONS

- Roll down curtain
- Paper holder
- Scale holder
- RAL color/laminate front and side panels
- Casters

PLAN VIEW - AVAILABLE LENGTHS



A90



PERFORMER FISH					
TECHNICAL FEATURES		MODELS			
		PERFORMER F1150	PERFORMER F1650	PERFORMER F2150	PERFORMER FA90
External Dimensions (L-D-H)	Inches	45 1/4" - 45 13/16" - 45 1/4"	64 15/16" - 45 13/16" - 45 1/4"	84 5/8" - 45 13/16" - 45 1/4"	52 5/16" - 45 13/16" - 45 1/4"
	Inches-MM	1150 - 1164 - 1150	1650 - 1164 - 1150	2150 - 1164 - 1150	1329 - 1164 - 1150
Crated Dimensions (L-D-H)	Inches	53 7/8" - 53 7/8" - 55 1/8"	73 5/8" - 53 7/8" - 55 1/8"	93 1/4" - 53 7/8" - 55 1/8"	58" - 53 7/8" - 55 1/8"
	Inches-MM	1370 - 1370 - 1400	1870 - 1370 - 1400	2370 - 1370 - 1400	1473 - 1370 - 1400
Operating Temperature	°F	36°F	36°F	36°F	36°F
BTU's @ +14°F Evap temperature	BTU's	2400 BTU'S	3330 BTU'S	3625 BTU'S	5200 BTU'S
Electric Supply		230/1/50 (EU)	230/1/50 (EU)	230/1/50 (EU)	230/1/50 (EU)
	(V/Ph/Hz)	120/1/60 (USA)	120/1/60 (USA)	120/1/60 (USA)	120/1/60 (USA)
Power Consumption	(W/A)	420W / 2.5A	650W / 4A	850W / 4.5A	1050W / 6A
Net Weights	Kg/Lb	200Kgs / 440Lbs	290Kgs / 639Lbs	330Kgs / 727Lbs	340Kgs / 749Lbs
Crated Weights	Kg/Lb	305Kgs / 672Lbs	435Kgs / 959Lbs	510Kgs / 1124Lbs	535Kgs / 1179Lbs

* Dimensions are without side panels



361-367 Beach Road, Burlingame, CA 94010
 Tel: 855.885.2400 | 650.342.2400 | Fax: 650.342.7400
 sales@oscartek.com | www.oscartek.com

