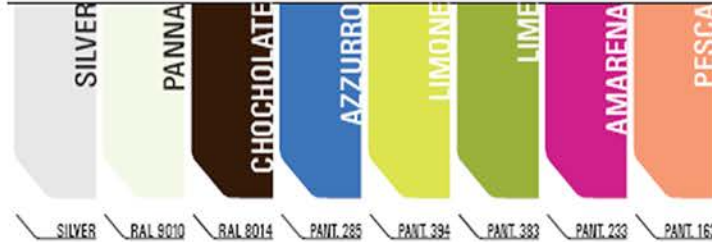
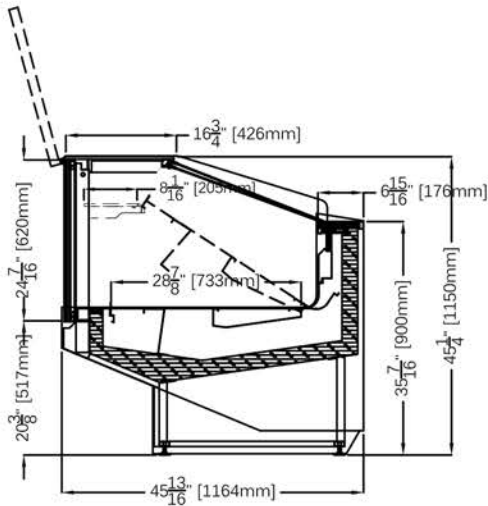


PERFORMER

Neutral Showcase



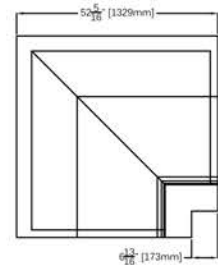
STANDARD FEATURES

- Double pane lift-up front glass
- Double pane sides
- Lift-up deck and evaporator to allow the perfect cleaning of the tank
- LED lighting
- Plexiglass sliding doors
- Cases ship standard unfinished

OPTIONS

- Bumper addition for cart/trolley
- Rolling curtain
- Paper holder
- Pull-out faucet inside the tank
- Cutting board with knives pocket
- Scale holder
- External condensing unit
- Intermediate shelf
- Casters

A90



PERFORMER NEUTRAL					
TECHNICAL FEATURES		MODELS			
		PERFORMER PN1150	PERFORMER PN1650	PERFORMER PN2150	PERFORMER PNA90
External Dimensions (L-D-H)	Inches	45 1/4" - 45 13/16" - 45 1/4"	64 15/16" - 45 13/16" - 45 1/4"	84 5/8" - 45 13/16" - 45 1/4"	52 5/16" - 52 5/16" - 45 1/4"
	Inches-MM	1150 - 1164 - 1150	1650 - 1164 - 1150	2150 - 1164 - 1150	1329 - 1329 - 1150
Crated Dimensions (L-D-H)	Inches	53 7/8" - 53 7/8" - 55 1/8"	73 5/8" - 53 7/8" - 55 1/8"	93 1/4" - 53 7/8" - 55 1/8"	58" - 58" - 55 1/8"
	Inches-MM	1370 - 1370 - 1400	1870 - 1370 - 1400	2370 - 1370 - 1400	1473 - 1473 - 1400
Electric Supply		230/1/50 (UE)	230/1/50 (UE)	230/1/50 (UE)	230/1/50 (UE)
	(V/Ph/Hz)	120/1/60 (USA)	120/1/60 (USA)	120/1/60 (USA)	120/1/60 (USA)
Power Consumption	(A)	2A	2A	3A	3A
Operating Temperature	Type	Ambient	Ambient	Ambient	Ambient
Net Weights	Kg/Lb	175Kgs / 385Lbs	270Kgs / 594Lbs	310Kgs / 682Lbs	330Kgs / 726Lbs
Crated Weights	Kg/Lb	220Kgs / 445Lbs	290Kgs / 640Lbs	340Kgs / 750Lbs	380Kgs / 835Lbs

* Dimensions are without side panels



361-367 Beach Road, Burlingame, CA 94010
 Tel: 855.885.2400 | 650.342.2400 | Fax: 650.342.7400
 sales@oscartek.com | www.oscartek.com

