



### STANDARD FEATURES

- Energy efficient air cooled condensing unit
- One piece molded body using 3' ecologic polyurethane insulation
- High performance
- Fan assisted with equalized temperature embedded coil and thermostatic valve
- Climate class 4 (+86°F/55% R.H.)
- AISI304 stainless steel external finish top and back stainless steel interior
- Ecological polyurethane foam insulation
- Stainless steel scotch brite adjustable feet, gray steel frame support
- Digital control panel
- Flexible arrangement that can be multiplexed and customized to fit customer layout
- Cases ship standard unfinished

### OPTIONS

- Sneeze guard
- 240oz. stainless steel container;
- Stainless steel cylindrical containers dim. Ø 7 1/2"-9 3/4"H.
- Approximately 7 liters
- Ventilated refrigeration
- Fan ventilated refrigeration system to equalized temperature inside the cabinet
- Condensing unit
- Water cooled condensing system
- Remote condensing unit
- Electric heated condensate pan
- Custom front and side paneling
- Stainless steel scoop washer with fixed water tap
- Reinforced wood crate
- Casters

### POZZETTI WITH STORAGE (REMOTE)

TECHNICAL FEATURES		MODELS					
		POZZETTI PSR2	POZZETTI PSR4	POZZETTI PSR6	POZZETTI PSR8	POZZETTI PSR10	POZZETTI PSR12
External dimensions (L-D-H)	Inches	19 11/16" - 25 13/16" - 36 5/8"	29 1/2" - 25 13/16" - 36 5/8"	39 3/8" - 25 13/16" - 36 5/8"	49 3/16" - 25 13/16" - 36 5/8"	59 3/8" - 25 13/16" - 36 5/8"	78 3/4" - 25 13/16" - 36 5/8"
	Inches-MM	500 - 655 - 931	750 - 655 - 931	1000 - 655 - 931	1250 - 655 - 931	1507 - 655 - 931	2000 - 655 - 931
Crated dimensions (L-D-H)	Inches	25" - 31" - 42"	35" - 31" - 42"	45" - 31" - 42"	55" - 31" - 42"	65" - 31" - 42"	85" - 31" - 42"
	Inches-MM	635 - 787 - 1066	889 - 787 - 1066	1143 - 787 - 1066	1397 - 787 - 1066	1651 - 787 - 1066	2159 - 787 - 1066
Refrigeration	Type	Static Only	Static / Ventilated	Static / Ventilated	Static / Ventilated	Static / Ventilated	Static / Ventilated
No. of Containers (240 oz.)	#	4	8	12	16	20	24
Compressor	Nr./Type	1	1	1	1	1	1
Compressor (PwH*pw)	(Pw-HP)	230-1/3	310-5/8	310-5/8	450-3/4	600-1,2	310-5/8
BTU's @ -25°F Evap							
Temperature	BTU'S	832 BTU'S	1280 BTU'S	2048 BTU'S	2528 BTU'S	3200 BTU'S	2048 BTU'S (2)
Power Supply	(V/Ph/Hz)	115/1/60	115/1/60	115/1/60	115/1/60	115/1/60	115/1/60 (2)
Electrical Input (standard)*	(A)	2A	3A	4A	5A	6A	4A (2)
Defrost	Mode/Type	Off-Cycle	Off-Cycle	Off-Cycle	Off-Cycle	Off-Cycle	Off-Cycle
Climatic Class	N°	4	4	4	4	4	4
Operating Conditions	°C/°F - R.H.%	30/86-55	30/86-55	30/86-55	30/86-55	30/86-55	30/86-55
Refrigerant	Type	R404A	R404A	R404A	R404A	R404A	R404A
Net Weights	Lb	175Lbs	260Lbs	335Lbs	444Lbs	523Lbs	774Lbs
Crated Weights	Lb	325Lbs	469Lbs	578Lbs	719Lbs	809Lbs	1231Lbs

\* Display case ONLY - Amperage DOES NOT INCLUDED CONDENSING UNIT

### POZZETTI WITH STORAGE (SELF CONTAINED)

TECHNICAL FEATURES		MODELS					
		POZZETTI PS2	POZZETTI PS4	POZZETTI PS6	POZZETTI PS8	POZZETTI PS10	POZZETTI PS12
External dimensions (L-D-H)	Inches	39 3/8" - 25 13/16" - 36 5/8"	49 3/16" - 25 13/16" - 36 5/8"	59 1/16" - 25 13/16" - 36 5/8"	68 7/8" - 25 13/16" - 36 5/8"	79 1/16" - 25 13/16" - 36 5/8"	98 7/16" - 25 13/16" - 36 5/8"
	Inches-MM	1000 - 655 - 931	1250 - 655 - 931	1500 - 655 - 931	1750 - 655 - 931	2007 - 655 - 931	2500 - 655 - 931
Crated dimensions (L-D-H)	Inches	25" - 31" - 42"	35" - 31" - 42"	45" - 31" - 42"	55" - 31" - 42"	65" - 31" - 42"	105" - 31" - 42"
	Inches-MM	635 - 787 - 1066	889 - 787 - 1066	1143 - 787 - 1066	1397 - 787 - 1066	1651 - 787 - 1066	2667 - 787 - 1066
Refrigeration	Type	Static / Ventilated	Static / Ventilated	Static / Ventilated	Static / Ventilated	Static / Ventilated	Static / Ventilated
No. of Containers (240 oz.)	#	4	8	12	16	20	24
Compressor	Nr./Type	1	1	1	1	1	1
Compressor	(Pw-HP)	230-1/3	310-5/8	310-5/8	450-3/4	600-1,2	310-5/8
Power Supply	(V/Ph/Hz)	115/1/60	115/1/60	115/1/60	115/1/60	115/1/60	115/1/60
Electrical Input (standard)	(W/A)	5.1A	7.2A	7.5A	7.5A	11.2A	15A
Defrost	Mode/Type	Off-Cycle	Off-Cycle	Off-Cycle	Off-Cycle	Off-Cycle	Off-Cycle
Climatic Class	N°	4	4	4	4	4	4
Operating Conditions	°C/°F - R.H.%	30/86-55	30/86-55	30/86-55	30/86-55	30/86-55	30/86-55
Refrigerant	Type	R404A	R404A	R404A	R404A	R404A	R404A
Net Weights	Lb	250Lbs	335Lbs	410Lbs	519Lbs	609Lbs	820Lbs
Crated Weights	Lb	400Lbs	544Lbs	653Lbs	794Lbs	884Lbs	1306Lbs

\* Manufacturer reserves the right to change specifications without notice. Not responsible for error and omissions.

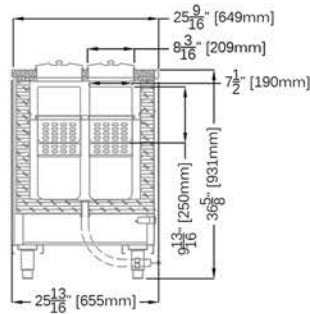


361-367 Beach Road, Burlingame, CA 94010  
 Tel: 855.885.2400 | 650.342.2400 | Fax: 650.342.7400  
 sales@oscartek.com | www.oscartek.com

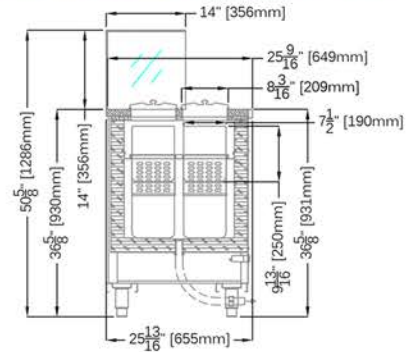




### STANDARD SIDE VIEW

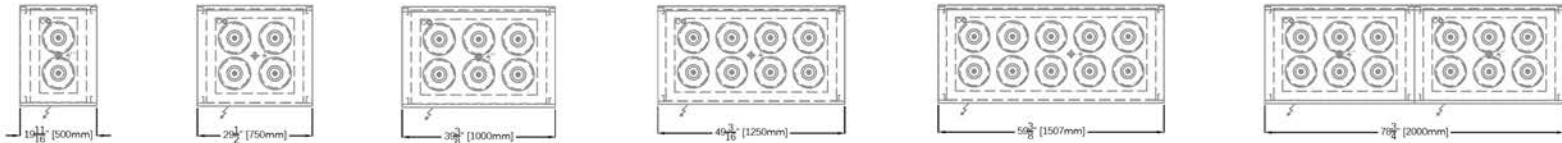


### OPTIONAL: SNEEZE GUARD SIDE VIEW

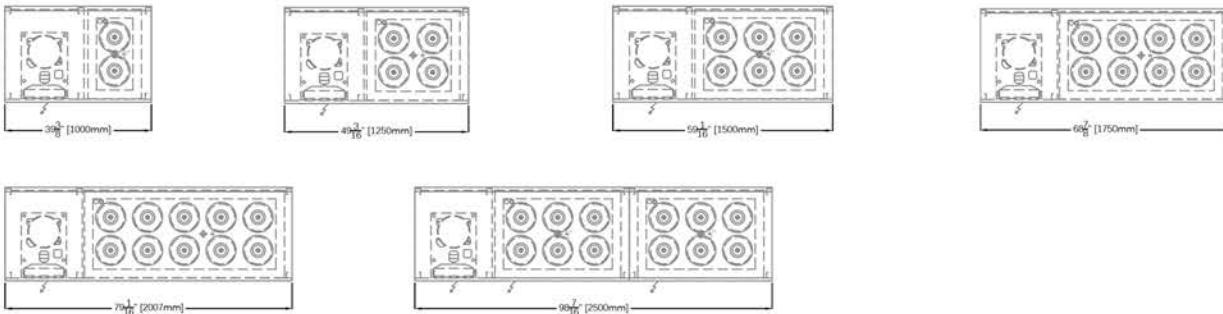


## PLAN VIEWS

### REMOTE:

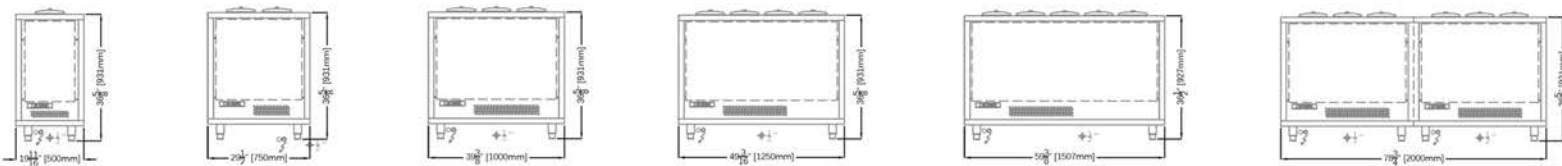


### SELF CONTAINED:

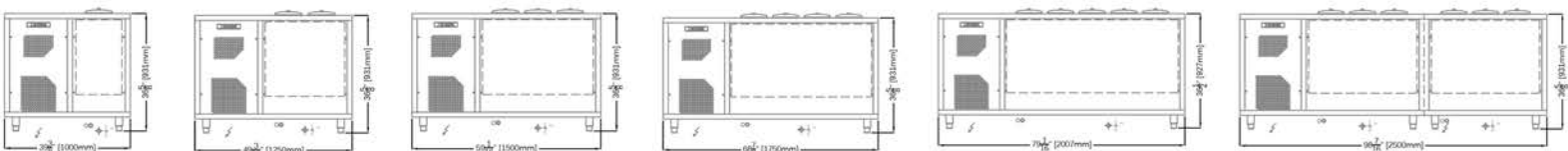


## REAR ELEVATION (OPERATOR SIDE)

### REMOTE:



### SELF CONTAINED:



\* Manufacturer reserves the right to change specifications without notice. Not responsible for error and omissions.



361-367 Beach Road, Burlingame, CA 94010  
 Tel: 855.885.2400 | 650.342.2400 | Fax: 650.342.7400  
 sales@oscartek.com | www.oscartek.com

